

### Amendment of Classification

**Owner:** Patsy Kelly, owner; Becky Davis, realtor advisor

**Property:** 320 E. 20<sup>th</sup> Street, Lots 1,2, & 3 Block 106, Houston Heights (per HCAD)

**Significance:** Contributing commercial property constructed circa 1930 (per inventory)  
HCAD shows a build date of 1945 for the buildings on the site, located in the  
Houston Heights East Historic District.

**Proposal:** Amendment of Classification

**Summary:** In 2008 when the Heights East Historic District was established by City  
Council (Resolution 2008-4), the district inventory labeled 320 E. 20<sup>th</sup> a  
potentially contributing (PC) commercial 1930 structure. The PC label likely  
stemmed from the main building, originally covered in 105 wood siding, being  
clad over with aluminum siding.

HCAD shows a build date of 1945 for the buildings on the site.

Documents supplied from the Harris County archive include a Block Book  
record that shows that a permit for construction was issued in November or  
December of 1944 for construction at this site.

**Public Comment:** No comment received

**Civic Association:** No comment received

### Change of Designation Criterion

#### Section 33-227 (c):

Amendment of any classification of a building, structure, object, or site within a historic district may be initiated by the director only upon finding that a building, structure, object, or site is incorrectly classified as contributing or non-contributing or that the existence of unusual or compelling circumstances, such as the presence of significant and irreversible changes not caused by the owner of the building, structure, or object, justifies the changing of the classification of the building, structure, object, or site.

A question has been raised about the lack of a specified and clearly articulated “Period of Significance” for the Heights East Historic District and whether this building is outside of the period of significance.

The director shall not recommend the change in classification of a building, structure, object, or site that has deteriorated due to any action or negligence of the owner.

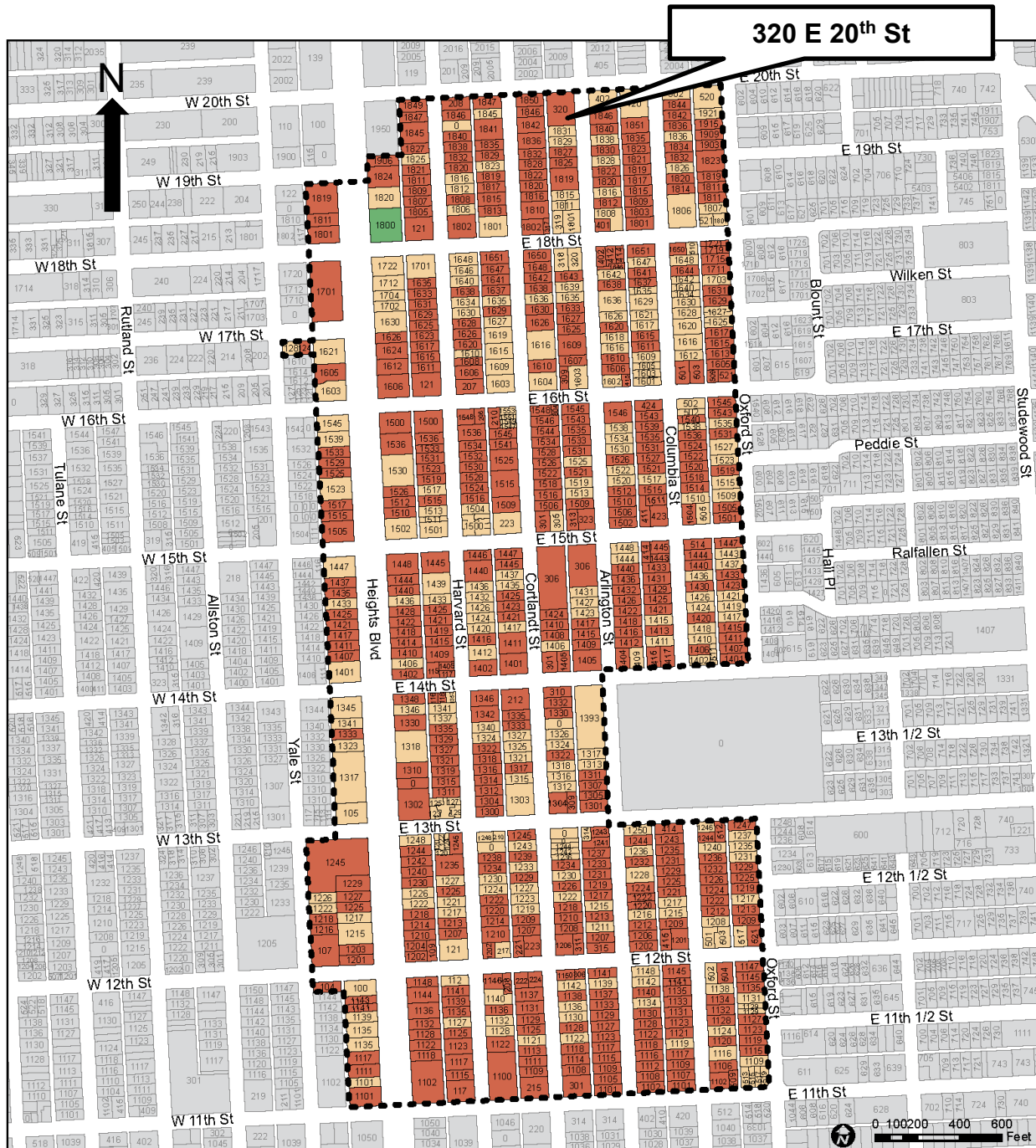
The director shall present the findings at a regularly scheduled meeting of the HAHC after giving notice to the property owner of the proposed change not later than 15 days before the meeting,

The HAHC shall either disapprove the director's recommended change or approve the change and refer the change to city council for approval.

A building that was constructed during the period of significance could be considered contributing even if its architectural style differs from the rest of the district.

On the other hand, any building that was constructed outside of the period of significance is considered noncontributing, even if it looks like a historic building. That is because contributing status is based on the property’s ability to convey the significance of the district, not its appearance or compatibility with historic properties.

## PROPERTY LOCATION



## Building Classification

- Contributing
- Non-Contributing
- Park

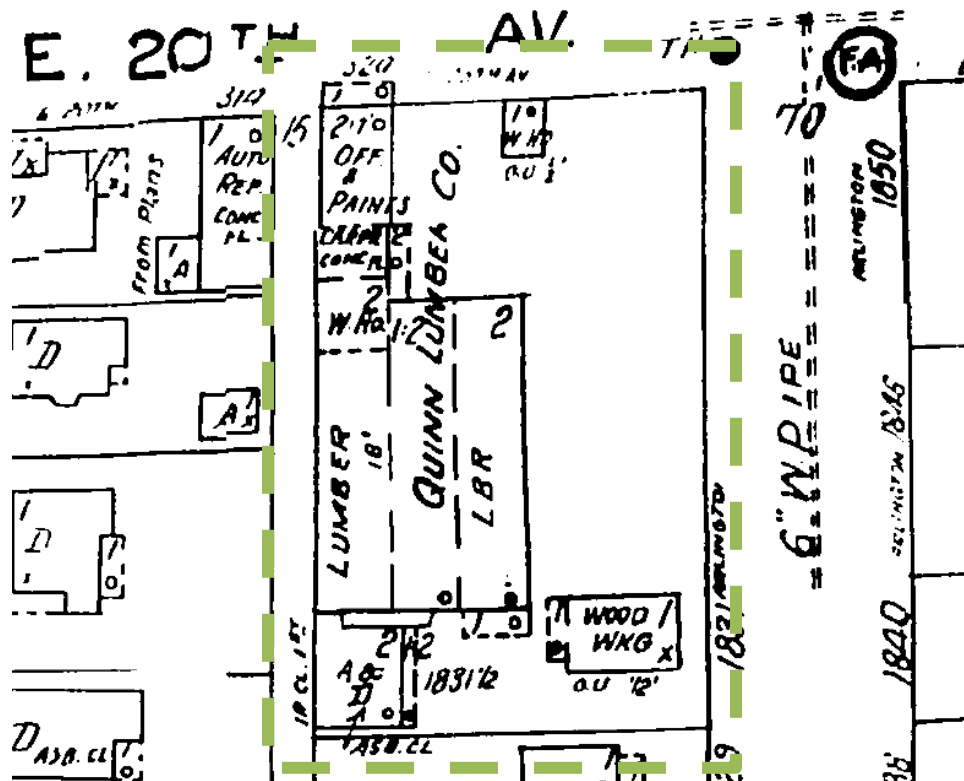
**INVENTORY PHOTO**



**GOOGLE STREET IMAGE**



## SANBORN MAP 1924-1951



## Houston Archaeological &amp; Historical Commission

September 11, 2025

Director Initiated Per Section 33-227

ITEM B

320 E. 20<sup>th</sup> Street

Houston Heights East

## TAX RECORDS

LAND VALUATION CARD, HARRIS COUNTY									
NAME, ADDRESS, AND PROPERTY DESCRIPTION					SEQUENCE NO.	VOL.	PAGE	SUB	ITEM
QUINN J R 320 E 20TH ST HOUSTON TEXAS .08.					2245310000	20	102		1
REMARKS <i>1200</i>									
DATE POSTED TO INV.					DEPUTY				
LTS 1T03 BLK106 H0 HT									
ASSD. VALUE LAND		ASSD. VALUE IMP.		SCHOOL DIST.	TOTAL VALUE		YEAR DATE		
800		6050		01	6850		1969		
NO.	SIZE	%	UNIT	FINAL UNIT	100% VALUE	ASS'D VALUE	CALCULATOR		
	150x132	11%	15	165	2497	1100			
	CT	1/3	15	5	250				
10% INCREASE 1969						110			
1969 TOTAL						1210			
TOTAL					2747	1100			

## BLOCK BOOK PROOF OF BUILD DATE

102

## ASSESSOR'S BLOCK BOOK FOR HARRIS COUNTY, TEXAS

Block or  
Abstract No. 106 Survey or Addition Houston Hts Plat No. S. D. D. D.

The abstract on this page of property assessed for taxes is plotted by Plat No. \_\_\_\_\_ of this survey, on page in this volume of the same number as this page. Numbers in tract column refer to corresponding numbers on said plat and designate the particular tract assessed for taxes. Reference is made to all data on said plat for description of said land assessed for taxes, which data and plat, whenever referred to, are made a part of said assessment.

PATENT					CERTIFICATE			
No.	Vol.	TO WHOM ISSUED	DATE	ACREAGE	No.	CLASS	CHARACTER	TO WHOM ISSUED
			M D Y					

## RENDERED FOR TAXATION

Year	BY WHOM RENDERED	Tract No.	ACRES OR LOTS	VALUE OF REAL ESTATE		Bldg. Permit No.	DATE	Amount of Permit	Inspector's Value	TRANSFER	Consideration	DATE
				Land	Improvements							
1942	<i>a. w. Cooley</i>	<i>A</i>	<i>1-2-3</i>	<i>800</i>								
	<i>Frank C. Arto</i>	<i>B</i>	<i>4</i>	<i>220</i>	<i>280</i>							

## ASSESSOR'S BLOCK BOOK FOR HARRIS COUNTY, TEXAS

Block or  
Abstract No. 106 Survey or Addition Houston Heights Plat No. S. D. 25

The abstract on this page of property assessed for taxes is plotted by Plat No. \_\_\_\_\_ of this survey, on page in this volume of the same number as this page. Numbers in tract column refer to corresponding numbers on said plat and designate the particular tract assessed for taxes. Reference is made to all data on said plat for description of said land assessed for taxes, which data and plat, whenever referred to, are made a part of said assessment.

PATENT					CERTIFICATE			
No.	Vol.	TO WHOM ISSUED	DATE	ACREAGE	No.	CLASS	CHARACTER	TO WHOM ISSUED
			M D Y					

## RENDERED FOR TAXATION

Year	BY WHOM RENDERED	Tract No.	ACRES OR LOTS	VALUE OF REAL ESTATE		Bldg. Permit No.	DATE	Amount of Permit	Inspector's Value	TRANSFER
				Land	Improvements					
1945	<i>A. H. Cooley</i>	<i>D</i>	<i>1-2-3</i>	<i>800</i>		<i>2738 1/2</i>	<i>4-12-3</i>	<i>3330</i>	<i>new</i>	
	<i>Frank C. Arto</i>	<i>B</i>	<i>4</i>	<i>220</i>	<i>280</i>					
	<i>Mrs. Anna F. Hinaman</i>	<i>D</i>	<i>5</i>	<i>220</i>	<i>200</i>					

Year	BY WHOM RENDERED	Tract No.	ACRES OR LOTS	VALUE OF REAL ESTATE		Bldg. Permit No.	DATE	Amount of Permit	Inspector's Value	TRANSFER
				Land	Improvements					
1946	<i>J. R. Quinn</i>	<i>D</i>	<i>1-2-3</i>	<i>800</i>	<i>3330</i>	<i>1347 478</i>	<i>J. R. Quinn</i>	<i>122944</i>		
	<i>Frank C. Arto</i>	<i>B</i>	<i>4</i>	<i>220</i>	<i>280</i>	<i>2007 3/2 1/4</i>	<i>1470</i>	<i>new Tot</i>		
	<i>Mrs. Anna F. Hinaman</i>	<i>D</i>	<i>5</i>	<i>220</i>	<i>200</i>					

## HEIGHTS DESIGN GUIDELINES

### Integrity

When a historic resource retains the characteristics that are associated with its significance, we say that it has *integrity*. This can mean, for example, that a building looks much as it did when it was built, or that a park maintains its original design. Sometimes, changes that are made over the years become old enough that they achieve historical significance of their own; in such cases, those alterations do not weaken the resource's integrity. Other changes — especially those that cover or remove important character-defining features — can damage or destroy a resource's integrity, so those types of changes should be avoided. The City of Houston's historic preservation ordinance is intended to prevent the destruction or removal of character-defining features, which would damage a building's integrity.

The illustrations below show how integrity can be lost through alterations. One major alteration can destroy integrity, but a series of multiple smaller changes — which singly might be fine — can have the same cumulative, negative effect.

It is also important to note that a building can be altered without losing its integrity. The presence of alterations does not mean that integrity has necessarily been damaged. In cases where integrity has been impacted, it can be restored by returning a historic resource to the condition it was in during the *period of significance*. While that is possible, it is better to maintain a building's integrity through good preservation practices than to restore it later.

### Period of Significance

No matter which government agency is evaluating the significance of a historic resource, the basis for significance is always tied to a specific period of time during which the important activities took place. This is called the *period of significance*; it may be as short as a single year or many decades long.

The *period of significance* usually begins with the construction date of a building or the start of an event. For example, the city of Houston Heights was founded in 1891, so its *period of significance* begins that year. A *period of significance* usually ends when construction or the association with a person or event ends. For example, the subdivision of Glenbrook Valley was built between 1953–1962, and that is the *period of significance* for the Glenbrook Valley Historic District. For the three Houston Heights Historic Districts, the 1940s are generally considered the end of the *period of significance*.

### Contributing and Noncontributing Classifications

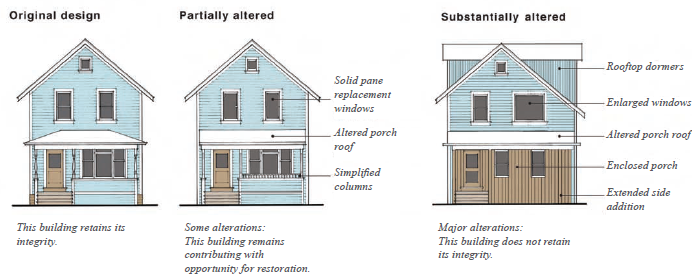
When a historic district is designated, the City creates an inventory that lists each historic resource (building, structure, object, or site), along with its address, legal description, construction date, and whether the resource is *contributing* or *noncontributing* to the district.

Each inventory is established at the time of the district's designation and does not reflect changes that have occurred on a property since then. This is especially true in Houston Heights Historic Districts East and West, which were designated two or more years before the historic preservation ordinance was changed to add protections for historic resources. During that time, from 2007–2010, a property owner whose COA application was denied only had to wait 90 days before doing whatever they wanted. Many buildings were demolished and new buildings constructed during those years.

In addition, at the time when the Houston Heights Historic Districts were designated, the City used three classifications: contributing, noncontributing, and potentially contributing. The "potentially contributing" classification was used to indicate that the building could become contributing if previous inappropriate alterations were reversed. Buildings classified as potentially contributing were subject to the same criteria for design review as contributing buildings, and in 2010, the "potentially" part of the term was eliminated to reduce confusion. The design review criteria for contributing buildings remained the same before and after 2010.

The inventory for each historic district is provided online in the City's Historic Preservation Manual; inventories for the Houston Heights Historic Districts are provided in the Appendix to this document. A map of each district is provided at the end of Section 3.

### Building Integrity



The City's historic preservation ordinance says that a resource is considered contributing when it "reinforces (or has conditions which, if reversed, would reinforce) the cultural, historical, or architectural significance of the district" as a whole. The presence of alterations do not automatically make a building noncontributing, however, just as changes do not necessarily impact integrity.

The contributing/noncontributing classification applies to each resource, not to the entire property; a single property may contain multiple buildings with different classifications, such as a contributing house and a noncontributing garage or shed. Some garages and garage apartments (especially on corner lots) were included in the inventory, but many were not. If a building or structure is not listed in the inventory, it is considered noncontributing.

A building that was constructed during the **period of significance** could be considered contributing even if its architectural style differs from the rest of the district. On the other hand, any building that was constructed outside of the **period of significance** is considered noncontributing, even if it looks like a historic building. That is because contributing status is based on the property's ability to convey the significance of the district, not its appearance or compatibility with historic properties.

Finally, the historic preservation ordinance was amended in 2015 to allow the contributing/noncontributing status of properties to be reclassified if they are found to be incorrectly classified or in the event of "unusual and compelling circumstances," at the discretion of the Planning Director.

### Character-Defining Features

We can judge whether a historic resource is significant and retains its integrity based on its character-defining features. These are visible, physical parts of a building and include the overall shape of the building, the materials with which it was built, evidence of craftsmanship in design and construction, decorative details, and elements of the site. The historic preservation ordinance states that the "distinguishing qualities or character" of a property should be preserved.

The individual components of a building and its architectural details are often associated with architectural styles, such as Craftsman, Queen Anne, Tudor Revival, or Ranch. By identifying the features that contribute to an architectural style (or more than one style, in some cases), we can make informed decisions about which features are character-defining and, therefore, should be preserved.

In addition to character-defining features that represent a style of architecture and are located on a relatively prominent or visible part of the building, any examples of skilled craftsmanship (such as carpentry or masonry) should be preserved. These may include turned columns, brackets, exposed rafter tails, jigsaw ornaments, moldings, trim, and similar architectural details, as well as decorative brickwork and other patterns in masonry walls.

## INVENTORY HOUSTON HEIGHTS HISTORIC DISTRICT EAST HOUSTON, TX

## BUILDING STATUS LEGEND

C Contributing  
PC Potentially Contributing  
NC Noncontributing  
V Vacant

\*Subdivision is 'Houston Heights' unless otherwise noted

PROPERTY ADDRESS		LOT/TRACT*	BLK	CIRCA YR BLT	BLDG STATUS	STYLE
1101	Arlington	Lt 12	198	1915	PC	Bungalow
1102	Arlington	Lt 13	197	1915	PC	Hipped Bungalow
1105	Arlington	Lt 11	198	1920	PC	American Foursquare
1108	Arlington	Lt 14	197	1915	PC	Bungalow Craftsman
1109	Arlington	Lt 10	198	1915	PC	Bungalow Craftsman
1112	Arlington	Lt 15	197	1915	PC	Bungalow Craftsman
1115	Arlington	Lt 9	198	1915	PC	Bungalow
1116	Arlington	Lt 16	197	1915	PC	Bungalow Craftsman
1117	Arlington	Lt 8	198	1915	PC	Bungalow
1118	Arlington	Lt 17	197	1920	C	Bungalow Craftsman
1122	Arlington	Lt 18	197	1920	PC	Bungalow
1123	Arlington	Lt 7	198	1915	PC	Bungalow
1127	Arlington	Lt 6	198	1940	PC	Cottage
1128	Arlington	Lt 19	197	1920	PC	Bungalow Craftsman
1129	Arlington	Lt 5	198	1910	C	Queen Anne Cottage
1130	Arlington	Lt 20	197	1915	C	Bungalow Craftsman
1133	Arlington	Lt 4	198	1918	PC	Bungalow Craftsman
1134	Arlington	Lt 21	197	2005	NC	New Single Family
1137	Arlington	Lt 3	198	1910	C	2-story Folk Victorian
1139	Arlington	Lt 2	198	1994	NC	New Single Family
1140	Arlington	Lt 22	197	1910	C	Queen Anne Cottage
1141	Arlington	Lt 1	198	1915	C	Hipped Bungalow
1142	Arlington	Lt 23	197	2005	NC	New Single Family
1148	Arlington	Lt 24	197	2006	NC	New Single Family
1201-1205	Arlington	Lt 12	189	1930	C	Brick Bungalow Duplex (Gar Apt PC)
1202	Arlington	Lt 13	190	1905	C	Queen Anne Cottage
1206	Arlington	Lt 14	190	1915	C	Hipped Bungalow
1207	Arlington	Lt 11	189	1915	PC	Bungalow Craftsman Duplex
1211	Arlington	Lt 10	189	1992	NC	New Single Family
1212	Arlington	Lt 15	190	1915	PC	Hipped Bungalow
1213	Arlington	Lt 9	189	1915	PC	Bungalow Craftsman
1215	Arlington	Lt 8	189	Lot	V	Lot
1216	Arlington	Lt 16	190	2007	NC	New Single Family
1217	Arlington	Lt 7	189	1910	C	Queen Anne Cottage
1219	Arlington	Lt 6	189	1915	C	Bungalow Craftsman
1220	Arlington	Tr 17	190	1920	PC	Hipped Bungalow

# Houston Archaeological & Historical Commission

September 11, 2025

Director Initiated Per Section 33-227

## ITEM B

320 E. 20<sup>th</sup> Street

Houston Heights East

PROPERTY ADDRESS		LOT/TRACT*	BLK	CIRCA YR BLT	BLDG STATUS	STYLE
1407	Arlington	Lts 11 & 12 & E 60 Ft of Lts 13 & 14	159	1915	C	Bungalow
1409	Arlington	Lt 10	159	1915	C	Hipped Bungalow
1412	Arlington	Lt 15 & Tr 16A	160	1920	PC	Bungalow Craftsman
1415	Arlington	Lt 9	159	1915	C	Hipped Bungalow Duplex
1416	Arlington	Tr 16	160	1915	PC	Bungalow Craftsman
1417	Arlington	Lt 8	159	1915	C	Bungalow Craftsman
1418	Arlington	Lt 17	160	1915	PC	Bungalow Craftsman
1422	Arlington	Lt 18	160	1915	PC	Bungalow Craftsman
1423	Arlington	Lt 7	159	1920	NC	Hipped Bungalow
1426	Arlington	Lt 19	160	1920	PC	Bungalow
1427	Arlington	Lt 6	159	Lot	V	Parking Lot
1431	Arlington	Lt 5	159	Lot	V	Parking Lot
1447	Arlington	Trs 1-6, 19-24	159	1961	C	Neo-Gothic Sanctuary
1432	Arlington	Lt 20	160	1915	PC	Bungalow Craftsman
1436	Arlington	Lt 21	160	1915	C	Bungalow Craftsman
1440	Arlington	Lt 22	160	1920	PC	Bungalow Craftsman
1444	Arlington	Lt 23	160	1925	NC	Bungalow
1448	Arlington	Lt 24	160	Lot	V	Lot
1502	Arlington	Lt 13	137	1915	C	Bungalow Craftsman
1506	Arlington	Lt 14	137	1915	C	Bungalow Craftsman
1509	Arlington	Lt 10	138	1920	PC	2-story Foursquare
1510	Arlington	Lt 15	137	1915	C	Bungalow Craftsman
1512	Arlington	Lt 16	137	1915	C	Bungalow Craftsman
1513	Arlington	Lt 9	138	1925	PC	Bungalow Duplex
1519	Arlington	Lt 8	138	1920	PC	Bungalow Craftsman
1520	Arlington	Lt 17	137	1994	NC	New Single Family
1521	Arlington	Lt 7	138	1915	PC	Bungalow
1522	Arlington	Lt 18	137	1998	NC	New Single Family
1525	Arlington	Lt 6	138	1997	NC	New Single Family
1526	Arlington	Lt 19	137	1920	C	Bungalow Craftsman
1530	Arlington	Lt 20	137	2007	NC	New Single Family
1531	Arlington	Lt 5	138	1925	C	Bungalow
1533	Arlington	Lt 4	138	1930	PC	Pedimented Bungalow
1534	Arlington	Lt 21	137	2006	NC	New Single Family
1535	Arlington	Lt 3	138	1925	PC	Bungalow
1538	Arlington	Lt 22	137	1996	NC	New Single Family
1543	Arlington	Lt 2	138	1920	NC	Bungalow Craftsman
1545	Arlington	Lt 1	138	1925	PC	Bungalow
1546	Arlington	Lts 23 & 24	137	1905	C	Queen Anne Cottage
1602	Arlington	Lt 14	114	1920	NC	Bungalow Remodeled
1603	Arlington	Trs 12A & 13A	115	2006	NC	New Single Family
1606	Arlington	Lt 15	114	1920	PC	Bungalow

**Houston Archaeological & Historical Commission**

September 11, 2025

Director Initiated Per Section 33-227

**ITEM B**320 E. 20<sup>th</sup> Street

Houston Heights East

PROPERTY ADDRESS		LOT/TRACT*	BLK	CIRCA YR BLT	BLDG STATUS	STYLE
1525	Cortlandt	Lts 5 & 6	139	1911	C	Tudor Revival
1526	Cortlandt	Lt 19	138	1905	PC	Modified L-Plan Queen Anne
1528	Cortlandt	Lt 20	138	1920	PC	Bungalow
1534	Cortlandt	Lt 21	138	1920	PC	Bungalow Craftsman
1541	Cortlandt	Lt 4	139	1915	PC	Bungalow
1544	Cortlandt	Lt 22	138	1920	PC	Bungalow Craftsman
1545	Cortlandt	Lt 3	139	1915	PC	Bungalow Craftsman
1546	Cortlandt	Lt 23	138	1920	PC	Bungalow
1547	Cortlandt	Tr 2B-1	139	1984	NC	Townhouse
1548	Cortlandt	Tr 24 A	138	1940	PC	English Cottage
1549	Cortlandt	Tr 2 B	139	1983	NC	Townhouse
1551	Cortlandt	Tr 1 B & 2 C	139	1984	NC	Townhouse
1553	Cortlandt	Lt 10	139	1984	NC	Townhouse
1603	Cortlandt	Lt 13 & Tr 12A	116	1910	NC	Folk Victorian
1607	Cortlandt	Lt 11 & Tr 12	116	2005	NC	New Single Family
1610	Cortlandt	Trs 15 A & 16A	115	1920	PC	Bungalow
1615	Cortlandt	Lt 10 & Tr 9A	116	1927	NC	Bungalow Remodeled
1616	Cortlandt	Lt 17 & Tr 16	115	1913	PC	Modified L-Plan Queen Anne/ Craftsman
1619	Cortlandt	Lt 8 & Tr 9	116	1916	NC	Bungalow Remodeled
1620	Cortlandt	Lt 18 & Tr 19	115	1915	C	Bungalow Craftsman
1626	Cortlandt	Lt 20 & Tr 19A	115	1917	PC	Modified Queen Anne
1627	Cortlandt	Lt 7 & S 3ft of Lt 6	116	1994	NC	New Single Family
1629	Cortlandt	N 47 Ft of Lt 6	116	1915	PC	Modified L-Plan
1630	Cortlandt	Lt 21	115	1917	PC	Bungalow Craftsman
1635	Cortlandt	Lt 5	116	1920	NC	Bungalow Craftsman
1636	Cortlandt	Lt 22	115	Lot	V	Lot
1637	Cortlandt	Lt 4	116	1915	C	Bungalow Craftsman
1638	Cortlandt	Lt 23	115	1918	PC	Bungalow Craftsman
1641	Cortlandt	Lt 3	116	1915	C	Bungalow Craftsman
1642	Cortlandt	Lt 24	115	1918	PC	Bungalow Craftsman
1647-49	Cortlandt	Lt 2	116	1915	PC	Bungalow Craftsman Duplex
1648	Cortlandt	Lt 25	115	1910	PC	Queen Anne Cottage
1650	Cortlandt	Lt 26	115	1937	PC	Colonial Revival
1651	Cortlandt	Lt 1	116	1905	PC	Modified L-Plan Queen Anne
1801	Cortlandt	Lt 13, Tr 12A	105	1955	NC	Apartments
1802	Cortlandt	Trs 14, 15B	106	1915	PC	Amer Foursquare
1810	Cortlandt	Lt 16, Tr 15	106	1915	PC	National Folk Pyramidal Craftsman
1813	Cortlandt	Trs 11, 12 A	105	1920	PC	Bungalow
1815	Cortlandt	Trs 10 & 11A	105	1920	PC	Bungalow
1816	Cortlandt	Lt 17 & S 5ft of Lt 18	106	1930	C	Modified Foursquare Brick
1817	Cortlandt	Lt 9, Tr 10A	105	1920	PC	Bungalow
1819	Cortlandt	Lt 8	105	1920	PC	Hipped Bungalow

# Houston Archaeological & Historical Commission

September 11, 2025

Director Initiated Per Section 33-227

## ITEM B

320 E. 20<sup>th</sup> Street

Houston Heights East

PROPERTY ADDRESS

PROPERTY ADDRESS		LOT/TRACT*	BLK	CIRCA YR BLT	BLDG STATUS	STYLE
1132	Heights Blvd	Lt 20	200	1940	PC	2-story Brick Broadfront
1136	Heights Blvd	Lt 21, Tr 22	200	1940	PC	Cottage
1139	Heights Blvd	Lt 4	201	1981	NC	Single Family
1141	Heights Blvd	Tr 3	201	1925	C	Bungalow Craftsman
1143	Heights Blvd	Trs 2, 3A	201	1925	C	Bungalow Craftsman
1144	Heights Blvd	Lt 23, Tr 22A	200	1930	PC	Bungalow
1145	Heights Blvd	Lt 1, Tr 2A	201	1960	NC	Apartments
1148	Heights Blvd	Lt 24	200	1924	C	Bungalow Craftsman
1201	Heights Blvd	Lt 12, Tr 31	186	1934	C	Brick Bungalow Duplex
1202	Heights Blvd	Lt 13	187	1920	C	Craftsman Duplex
1203	Heights Blvd	Lt 11, Tr 30	186	1910	C	Hipped Bungalow Craftsman
1204	Heights Blvd	Lt 14	187	1920	PC	Bungalow Craftsman
1210	Heights Blvd	Lt 15	187	1930	C	Apartments Art Deco
1214	Heights Blvd	Lt 16	187	1905	C	Queen Anne
1215	Heights Blvd	Lts 9, 10, Tr 20	186	1958	NC	Brick Ranch
1217	Heights Blvd	Lt 8, Tr 28	186	1952	NC	Apartments
1218	Heights Blvd	Lt 17	187	1920	C	Bungalow Craftsman
1222	Heights Blvd	Lt 18	187	1964	NC	Apartments
1225	Heights Blvd	Lt 7, Tr 27	186	1920	C	Foursquare Craftsman
1226	Heights Blvd	Lt 19	187	1946	NC	Single Family
1227	Heights Blvd	Lt 6, Tr 26	186	1912	PC	Bungalow Craftsman
1229	Heights Blvd	Lt 5, Trs 4, 25	186	1898	PC	Colonial Revival
1230	Heights Blvd	Lt 20	187	1920	PC	Craftsman
1231	Heights Blvd	Lt 5, Trs 4, 25	186		NC	Garage Apartment
1240	Heights Blvd	Lt 21	187	1920	PC	Bungalow Craftsman
1242	Heights Blvd	Lt 22	187	1925	C	Bungalow Craftsman
1244	Heights Blvd	Lt 23	187	1920	PC	Bungalow Craftsman
1245	Heights Blvd	See 1240 Yale	186	1971	C	Neo-Gothic Church
1248	Heights Blvd	Lt 24	187	1955	NC	Single Family Ranch
1310	Heights Blvd	Lts 13-17, Tr 18A	170	1925	C	Renaissance Revival
1317	Heights Blvd	Lts 7-10, Tr 6	171	1960	NC	Commercial
1318	Heights Blvd	Lts 19, 20, Trs 18, 21	170	1960	NC	Apartments
1323	Heights Blvd	Lt 5, Tr 6A	171	Lot	V	Lot
1330	Heights Blvd	Lt 22, Tr 21A	170	1920	C	Foursquare Craftsman
1333	Heights Blvd	Lt 4	171	1920	C	Amer Foursquare
1341	Heights Blvd	5 The Boulevard Subdivision	171	2007	NC	Brick Townhouse
1343	Heights Blvd	4 The Boulevard Subdivision	171	2007	NC	Brick Townhouse
1345	Heights Blvd	3 The Boulevard Subdivision	171	2007	NC	Brick Townhouse
1347	Heights Blvd	2 The Boulevard Subdivision	171	2007	NC	Brick Townhouse
1349	Heights Blvd	1 The Boulevard Subdivision	171	2007	NC	Brick Townhouse
1346	Heights Blvd	Lt 23	170	Lot	V	Lot

# Houston Archaeological & Historical Commission

September 11, 2025

Director Initiated Per Section 33-227

## ITEM B

320 E. 20<sup>th</sup> Street  
Houston Heights East

### PROPERTY LIST

PROPERTY ADDRESS		LOT/TRACT*	BLK	CIRCA YR BLT	BLDG STATUS	STYLE
1348	Heights Blvd	Lt 24	170	1910	C	Colonial Revival
1401	Heights Blvd	Lts 11, 12	156	1960	NC	Commercial
1402	Heights Blvd	Lt 13	157	1920	PC	Craftsman
1406	Heights Blvd	Lt 14	157	2006	NC	New Single Family
1407	Heights Blvd	Lt 10	156	1921	C	Craftsman
1410	Heights Blvd	Lt 15	157	1925	PC	Craftsman
1411	Heights Blvd	Lt 9	156	1941	C	Colonial Cottage Brick
1414	Heights Blvd	Lt 16	157	1943	C	Cottage
1417	Heights Blvd	Lt 8	156	1920	PC	Bungalow
1418	Heights Blvd	Lt 17	157	1918	C	Craftsman/ Prairie School
1421	Heights Blvd	Lt 7	156	1910	C	Colonial Revival
1422	Heights Blvd	Lt 18	157	1940	PC	Cottage
1425	Heights Blvd	Lt 6	156	1925	PC	Bungalow Craftsman
1428	Heights Blvd	Lt 19	157	1937	PC	English Cottage
1433	Heights Blvd	Lt 5	156	1935	NC	Single Family
1435	Heights Blvd	Lt 4	156	1903	C	Queen Anne
1436	Heights Blvd	Lt 20	157	2006	NC	New Single Family
1437	Heights Blvd	Lt 3	156	1903	C	Queen Anne
1440	Heights Blvd	Lt 21	157	1920	C	Bungalow Craftsman
1444	Heights Blvd	Lt 22	157	1920	PC	Bungalow Craftsman
1447	Heights Blvd	Lts 1, 2	156	1960	NC	Condominium
1448	Heights Blvd	Lts 23, 24	157	1914	C	Craftsman/Prairie School
1502	Heights Blvd	Lts 13, 14	140	1960	NC	Apartments
1505	Heights Blvd	Lts 11, 12	141	1905	PC	Queen Anne
1510	Heights Blvd	Lt 15	140	1920	C	Bungalow Craftsman
1512	Heights Blvd	Lt 16	140	1930	PC	2-story Gable-front Brick
1515	Heights Blvd	Lt 10	141	1910	C	Queen Anne
1517	Heights Blvd	Lt 9	141	1920	PC	Amer Foursquare
1523	Heights Blvd	Lts 7, 8, Tr 6A	141	1965	NC	Apartments
1525-27	Heights Blvd	Tr 6	141	1930	PC	Bungalow Craftsman Duplex
1526	Heights Blvd	Lt 17	140	1920	PC	Bungalow
1529	Heights Blvd	Lt 5	141	1930	C	Bungalow Craftsman Duplex
1530	Heights Blvd	Lts 18, 19 & 20	140	1960	NC	Apartments
1533	Heights Blvd	Lt 4	141	1925	PC	Bungalow
1536	Heights Blvd	Lts 21, 22, Trs 3, 4A	140	1920	C	Craftsman Prairie School
1539	Heights Blvd	Lt 3, S 1/2 of Lt 2	141	2004	NC	New Single Family
1545	Heights Blvd	Lt 1, N 1/2 of Lt 2	141	2003	NC	Commercial
1548	Heights Blvd	Lts 1, 2, 23, 24, Tr 3A	140	1924	C	Neo-Classical Church
1603	Heights Blvd	Heights Blvd Condo	133	1993	NC	Condominium
1605	Heights Blvd	Lt 4, Trs 3A, 5, 6	133	1918	C	Renaissance Revival
1605	Heights Blvd	Lt 4, Trs 3A, 5, 6	133	1918	C	Carriage House
1606	Heights Blvd	Lts 14 & 15	117	1948	PC	Meeting Hall/ Classical Revival

# Houston Archaeological & Historical Commission

September 11, 2025

Director Initiated Per Section 33-227

## ITEM B

320 E. 20<sup>th</sup> Street

Houston Heights East

PROPERTY ADDRESS		LOT/TRACT*	BLK	CIRCA YR BLT	BLDG STATUS	STYLE
1612	Heights Blvd	Lts 16 & 17	117	1921	PC	2-story Craftsman
1621	Heights Blvd	17th Street Condo	133	2000	NC	Condominium
1624	Heights Blvd	Lt 18, Tr 17A	117	1921	C	Foursquare Craftsman
1626	Heights Blvd	Lt 19	117	1940	PC	Cottage
1630	Heights Blvd	Lts 20 & 21	117	1989	NC	New Single Family
1703	Heights Blvd	Lts 1-7	118	1927	C	Neo-Classical Church
1702	Heights Blvd	Lt 22	117	1996	NC	New Single Family
1704	Heights Blvd	Lt 23	117	1996	NC	New Single Family
1712	Heights Blvd	Lt 24, S 20ft of Lt 25	117	1998	NC	New Single Family
1722	Heights Blvd	Lt 26, Tr 25B	117	2000	NC	New Single Family
1745	Heights Blvd	Lts 1-7	118	1965	C	Neo-Gothic Church
0	Heights Blvd	Tr 25A	117	Lot	V	Lot
1800	Heights Blvd	Lts 14, 15 & 16	104	1986	C	Landscape Gazebo
1801	Heights Blvd	Lts 6 & 7	103	1910	C	Classical/Prairie/ Craftsman
1811	Heights Blvd	Lt 5, Tr 4	103	1910	PC	Amer Foursquare
1819	Heights Blvd	Lts 1, 2, 3 Tr 4A	103	1947	C	Gothic Revival Church
1820	Heights Blvd	Lts 17 & 18	104	1950	NC	Ranch
1824	Heights Blvd	Lts 19 & 20	104	1889	PC	Queen Anne
1906	Heights Blvd	Lt 21	104	1925	C	Craftsman
1100 -1900 Blk	Heights Blvd	Esplanade		1891	C	Esplanade
1109	Oxford	Lt 10	196	2007	NC	New Single Family
1115	Oxford	Lt 9	196	1920	PC	Pedimented Bungalow
1119	Oxford	Lt 8	196	1905	PC	2-story I-house
1123	Oxford	Lt 7	196	1905	PC	Queen Anne Cottage
1127	Oxford	Lt 6	196	1905	PC	Hipped Bungalow
1129 B	Oxford	1 Oxford Street	196	2002	NC	New Single Family
1129 A	Oxford	2 Oxford Street	196	2001	NC	New Single Family
1131	Oxford	Lt 4	196	1915	C	Bungalow Craftsman
1135	Oxford	Lt 3	196	1890	C	Cottage
1145	Oxford	Lt 2	196	1910	PC	Pyramid-roof Cottage
1147	Oxford	Lt 1	196	1915	PC	Folk Victorian
1209	Oxford	Lt 10	191	1920	PC	Bungalow Craftsman
1213	Oxford	Lt 9	191	1920	PC	Bungalow Craftsman
1217	Oxford	Lt 8	191	1900	NC	L-plan Cottage
1219	Oxford	Lt 7	191	1920	PC	Bungalow Craftsman
1225	Oxford	Lt 6	191	1905	PC	Folk Victorian
1229	Oxford	Lt 5	191	1935	PC	Brick bungalow
1231	Oxford	Lt 4	191	1965	NC	Apartments
1235	Oxford	Lt 3	191	1910	NC	Altered
1237	Oxford	Lt 2	191	1920	NC	Altered
1247	Oxford	Lt 1	191	1910	PC	Queen Anne
1401	Oxford	Lt 12	161	1900	PC	2-story Queen Anne

# Houston Archaeological & Historical Commission

September 11, 2025

Director Initiated Per Section 33-227

## ITEM B

320 E. 20<sup>th</sup> Street

Houston Heights East

PROPERTY ADDRESS		LOT/TRACT*	BLK	CIRCA YR BLT	BLDG STATUS	STYLE
521	E 12th St	Trs 11 & 12	191	1897	PC	Queen Anne Cottage Raised
120	E 13th St	Trs 1A-1 & 2A-1	187	1985	NC	Townhouse
122	E 13th St	Trs 1B & 2B	187	1985	NC	Townhouse
124	E 13th St	Trs 1A & 2A	187	1985	NC	Townhouse
120	E 13th St	Tr 2A-2	187	N/a	V	Common Open Space
123	E 13th St	Tr A	170	1984	NC	Townhouse
125	E 13th St	Tr B	170	1984	NC	Townhouse
127	E 13th St	Tr C	170	1984	NC	Townhouse
128	E 13th St	See 1245 Harvard				
129	E 13th St	Tr D	170	1984	NC	Townhouse
203	E 13th St	See 1300 Harvard	169	1920	PC	Garage Apartment
210	E 13th St	E 55.75ft of Lt 24	188	2000	NC	New Single Family
309	E 13th St	Trs 13 & 14	168	1920	PC	Foursquare Craftsman
314	E 13th St	Trs 1A & 2A	189	1984	NC	Commercial
414	E 13th St	See 1247 Columbia	190	1915	PC	Bungalow Craftsman
512	E 13th St	Lt 23 & 24A	191	1920	PC	Bungalow Craftsman
516	E 13th St	See 1247 Oxford	191	1940	PC	Garage Apartment
105	E 14th St	See 1402 Heights Blvd	157	1920	PC	Amer Foursquare
106	E 14th St	See 1348 Heights Blvd	170	2000	NC	Garage Apartment
115	E 14th St	Lt 11 & Tr 12A	157	1928	PC	Odd Fellows Hall
116	E 14th St	Tr 1B	170	1925	PC	Bungalow Craftsman
117	E 14th St	Lt 12	157	1925	PC	Craftsman fourplex
118	E 14th St	Tr 1A	170	1925	PC	Bungalow Craftsman
207	E 14th St	See 1402 Harvard				
212-216	E 14th St	See 1341 Cortlandt	169	1935	NC	Fourplex
301	E 14th St	W 72 Ft of Lts 13 & 14	159	1906	C	Modified L-Plan Queen Anne
310-312	E 14th St	Lt 24	168	1920	PC	Duplex
409	E 14th St	Trs 13A & 14A	159	1915	NC	Bungalow Craftsman
415	E 14th St	Trs 11A & 12A	160	1910	PC	Queen Anne
417	E 14th St	Trs 11 & 12	160	1910	C	Craftsman Cottage
511	E 14th St	Trs 13A & 14A	161	1930	PC	Bungalow
223	E 15th St	See 1501 Cortlandt				
301	E 15th St	Trs 13 & 14	138	1905	PC	Modified L-Plan Queen Anne
305	E 15th St	Trs 13A & 14A	138	1920	NC	Bungalow
306	E 15th St	See 1448 Cortlandt				
313	E 15th St	Trs 11A & 12A	138	1905	PC	Modified L-Plan Queen Anne
323	E 15th St	Trs 11 & 12	138	1920	C	Bungalow Craftsman
411	E 15th St	Trs 10A, 11A & 12A	137	1919	PC	Bungalow Craftsman
414	E 15th St	Trs 1A & 2B	160	1930	PC	Bungalow Craftsman
423	E 15th St	Trs 11 & 12	137	1915	PC	Bungalow Craftsman
426	E 15th St	See 1445 Columbia				

# Houston Archaeological & Historical Commission

September 11, 2025

Director Initiated Per Section 33-227

## ITEM B

320 E. 20<sup>th</sup> Street  
Houston Heights East

PROPERTY ADDRESS		LOT/TRACT*	BLK	CIRCA YR BLT	BLDG STATUS	STYLE
503	E 15th St	See 1504 Columbia				
505	E 15th St	Tr 13A & 14A	136	1915	NC	Cottage
514	E 15th St	See 1448 Columbia	161	1920	C	Garage Apartment
117	E 16th St	Lts 12 & 13	117	1910	PC	Garage Apartment
121	E 16th St	Lts 12 & 13	117	1910	C	Foursquare Colonial Revival
206	E 16th St	Trs 23B & 24A	139	1925	PC	Bungalow Craftsman
207	E 16th St	See 1602 Harvard	116		NC	Garage Apartment
210	E 16th St	Trs 1A & 2A	138	1915	PC	Folk Victorian
301	E 16th St	Lt 14 & Tr 15A	115	1910	PC	Modified L-Plan Queen Anne
304	E 16th St	Tr 24B	138	1940	PC	Cottage
309	E 16th St	Trs 12 & 13	115	1920	PC	Bungalow Craftsman
415	E 16th St	Tr 14A	114	1940	C	English Cottage
424	E 16th St	Lt 1	137	1940	PC	Cottage
501	E 16th St	Trs 14A & 15A	113	1919	PC	Bungalow Craftsman
502	E 16th St	Tr 23	136	1970	NC	Metal warehouse
502	E 16th St	Lt 24	136	1970	NC	Metal warehouse
503	E 16th St	Trs 14 & 15	113	1920	C	Bungalow Craftsman
509	E 16th St	Tr 13	113	1940	PC	Apartments
514	E 16th St	See 1545 Oxford	136	1940	PC	Garage Apartment
521	E 16th St	Tr 13A	113	1930	PC	Commercial Brick 1-story
116	E 18th St	See 1722 Heights Blvd	117	2000	NC	Garage Apartment
121	E 18th St	Lts 12 & 13	104	1915	PC	Modified L-Plan Queen Anne
316	E 18th St	See 1650 Cortlandt	115	1937	PC	Garage Apartment
317	E 18th St	Trs 14A, 15A	106	1920	PC	Garage Apartment
318	E 18th St	Trs 1 and 2	115	1997	NC	New Single Family
319	E 18th St	Trs 12 A and 13 A	106	1960	NC	Single Family
320	E 18th St	Trs 1 A and 2 A	115	1970	NC	Duplex
401	E 18th St	Lt 14	107	1920	PC	Bungalow Craftsman
402	E 18th St	Tr 26A	114	1920	C	Bungalow Craftsman
409	E 18th St	Tr 14A	107	1920	PC	Bungalow Craftsman
412	E 18th St	Tr 26B	114	1900	PC	Gable-front Cottage
414	E 18th St	Trs 25 and 26	114	1900	PC	Gable-front Cottage
501	E 18th St	14, 15 and 16	108	1998	NC	Funeral home
510	E 18th St	Tr 26	113	1900	PC	L-Plan Cottage
521	E 18th St	Tr 13A	108	1960	NC	Single Family
208	E 20th St	Lt 26	105	1945	PC	1-story Commercial Brick
214	E 20th St	Lt 26	105	1960	NC	Wood Bldg
314	E 20th St	See 1850 Cortlandt	106	1960	NC	Commercial
320	E 20th St	Lts 1, 2 & 3	106	1930	PC	Commercial
402	E 20th St	Lt 26 & Tr 25	107	1950	NC	Commercial
420	E 20th St	Lts 1, 2 & Tr 3A	107	1955	NC	Commercial
502	E 20th St	Lt 26	108	1940	NC	Commercial

**Houston Archaeological & Historical Commission**

September 11, 2025

Director Initiated Per Section 33-227

**ITEM B**320 E. 20<sup>th</sup> Street

Houston Heights East

PROPERTY ADDRESS		LOT/TRACT*	BLK	CIRCA YR BLT	BLDG STATUS	STYLE
520	E 20th St	Lts 1 & 2	108	2003	NC	Commercial
104	W 12th St	Lt 24	201	1900	PC	2-story Commercial Wood
110	W 12th St	Lt 24	201	1916	PC	2-story Commercial Brick
112	W 12th St	Lt 24	201	1922	PC	2-story Commercial Brick
107	W 12th St	Lts 13, 14 15 & Tr 36	186	1914	PC	Jacobean
101	W 13th St	4 Alamo Row East	171	2008	NC	Townhouse
103	W 13th St	3 Alamo Row East	171	2008	NC	Townhouse
105	W 13th St	2 Alamo Row East	171	2008	NC	Townhouse
107	W 13th St	1 Alamo Row East	171	2008	NC	Townhouse
116	W 13th St	Lt 24	186	1912	C	Horse Hitching Rings (curb)
109	W 15th St	See 1505 Heights	141	1970	NC	
128	W 17th St	Trs 13 & 14	133	Lot	V	Lot
124	W 17th St	Trs 13A & 14A	133	1909	C	2-story Queen Anne

**PHOTOS OF POST 1940 & COMMERCIAL STRUCTURES  
IN THE CONTEXT AREA**



*Figure 1- 1127 Arlington Street\_PC\_1940 (inventory)  
HCAD shows it was built in 2013*



*Figure 1- 1447 Arlington Street\_C\_1961*



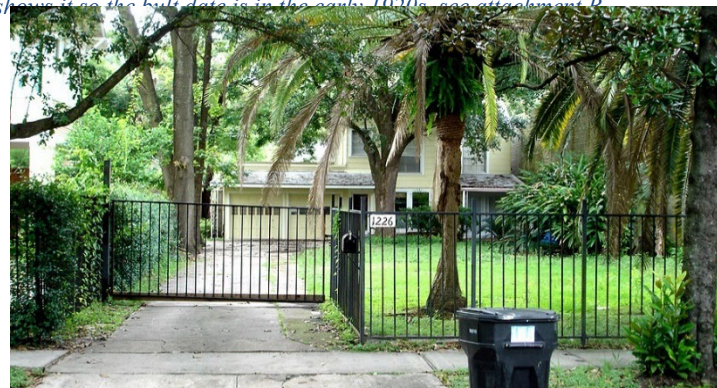
*Figure 2- 1548 Cortlandt\_PC\_1940(inventory), it shows up  
in 1937/38 City Directory. It was most likely built 1935-  
1936. See attachment A*



*Figure 4- 1132 Heights\_PC\_1940 (inventory) 1925 Sanborn Map  
shows it as the built date is in the early 1920s see attachment B*



*Figure 3- 1136 Heights\_PC\_1940*



*Figure 6\_ 1226 Heights\_NC\_1946*

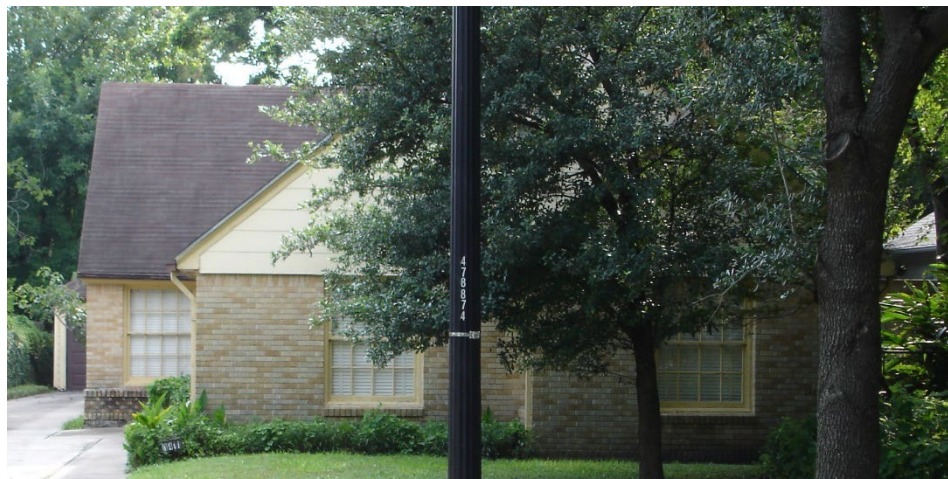
**PHOTOS OF POST 1940 & COMMERCIAL STRUCTURES IN THE CONTEXT AREA**



*Figure 7- 1317 Heights \_PC\_1960\_ COMMERCIAL*



*Figure 8- 1401 Heights \_NC\_1960\_ COMMERCIAL*



*Figure 9\_1411 Heights \_C\_1941*



*Figure10\_ 1414 Heights \_ C \_ 1943*



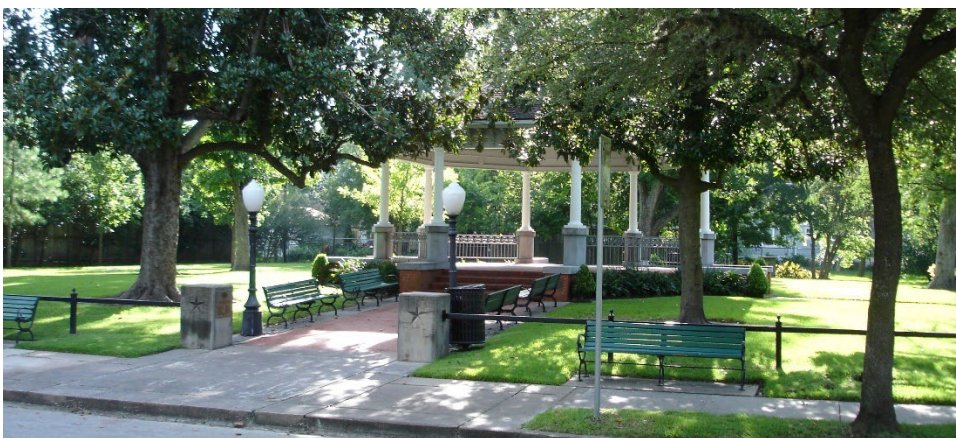
*Figure 11\_ 1422 Heights\_ PC\_ 1940*



*Figure 12\_ 1626 Heights \_ PC \_ 1940*



*Figure 13\_1745 Height \_C\_1965*



*Figure 14\_1800 Heights \_C\_1981*



*Figure 15\_1819 Heights \_C\_1947*



Figure 16 516 E 13TH PC 1940



Figure 17 304 E 16TH PC 1940

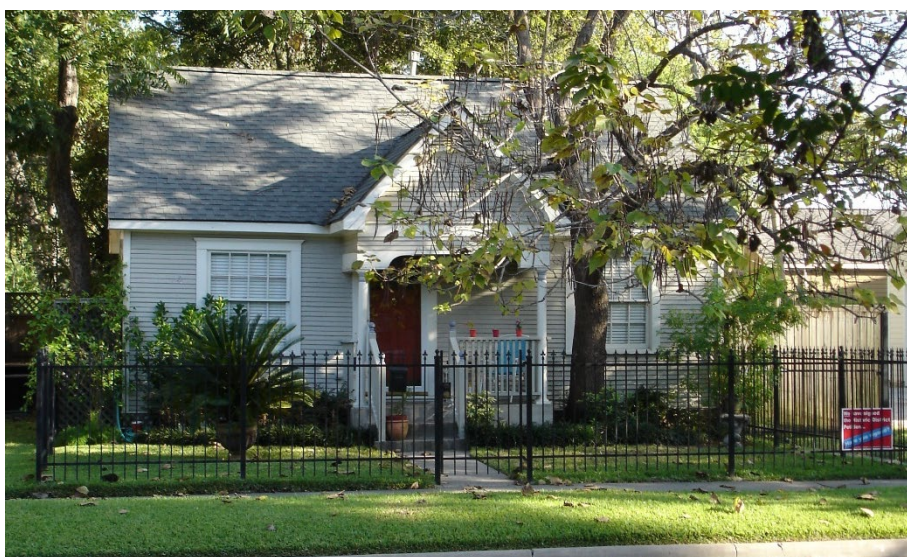


Figure 18 \_ 415 E 16th \_ C \_ 1940



Figure 19\_ 424 E 16th St \_PC\_ 1940



Figure 20\_ 509 E16th St \_PC\_ 1940



Figure 21\_ 514 E 16th St \_PC\_ 1946

**COMMERCIAL STRUCTURES IN CONTEXT AREA**



*Figure 22\_521 E 16th Street \_PC\_ 1930*



*Figure 23\_208 E 20th St\_PC\_1945*



*Figure 24-1850 Cortlandt \_NC\_ 1960*



Figure 25\_402 E 20th St\_NC\_1950



Figure 26\_420 E 20th St\_NC\_1955



Figure 27\_502 E 20th St\_NC\_1940



Figure 28\_520 E 20th St\_NC\_2003



Figure 29 104 W 12th St\_PC\_1900



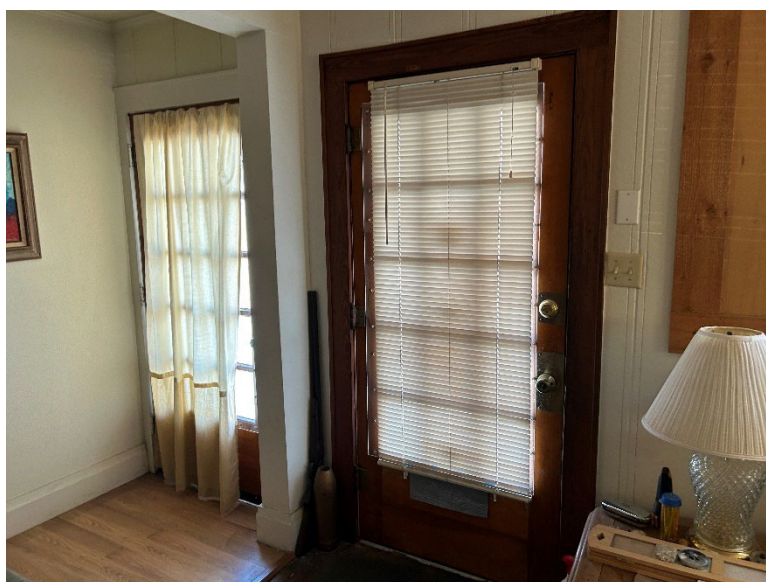
Figure 30\_110 & 112 W 12th St\_PC\_1916 & 1922

**EXISTING PHOTOS  
SITE VISIT 03/2025**









**Houston Archaeological & Historical Commission**

September 11, 2025

Director Initiated Per Section 33-227

**ITEM B**

320 E. 20<sup>th</sup> Street

Houston Heights East

---

**RCA 2008\_0004**

CITY OF HOUSTON, TEXAS, RESOLUTION NO. 2008- 4

**A RESOLUTION DESIGNATING HOUSTON HEIGHTS HISTORIC DISTRICT EAST AS AN HISTORIC DISTRICT.**

**WHEREAS**, Section 33-225(d) of the City of Houston authorizes the City Council to consider each application for designation of an area as an historic district after receiving a recommendation and the record of all proceedings from the Planning Commission of the City of Houston; and

**WHEREAS**, Section 33-224 of the City of Houston Code of Ordinances authorizes the City Council of the City of Houston to consider the appropriate criteria as enumerated therein for the designation of an historic district; and

**WHEREAS**, Section 33-225(d) of the City of Houston Code of Ordinances authorizes the City Council of the City of Houston to decide whether to designate the area as an historic district; and

**WHEREAS**, the City Council of the City of Houston has considered the application for designating the Houston Heights Historic District East area as an historic district after receiving a favorable recommendation from the Planning Commission of the City of Houston and the appropriate criteria; **NOW THEREFORE**,

**BE IT RESOLVED BY THE CITY COUNCIL OF THE CITY OF HOUSTON, TEXAS;**

**Section 1.** That the City Council of the City of Houston finds that the application for designation of the Houston Heights Historic District East area as an historic district satisfies the applicable criteria of Section 33-224 of the City of Houston Code of Ordinances.

**Section 2.** That the City Council of the City of Houston designates the Houston Heights Historic District East area as an historic district.

**Section 3.** That the City Council of the City of Houston approves the boundaries of the Houston Heights Historic District East historic district as established on the site location map attached hereto and made a part hereof for all purposes as Exhibit "A".

**Section 4.** That the City Council of the City of Houston designates as Contributing, Potentially Contributing, or Non-Contributing Structures those structures so indicated in Exhibit "B".

**Section 5.** That this Resolution shall take effect immediately upon its passage and approval by the Mayor, however, in the event that the Mayor fails to sign this Resolution within five days after its passage and adoption, it shall take effect in accordance with Article VI, Section 6, Houston City Charter.

**PASSED AND ADOPTED**, this 20th day of February, 2008.

**APPROVED**, this \_\_\_\_\_ day of \_\_\_\_\_, 2008.

\_\_\_\_\_  
Mayor of the City of Houston

Pursuant to Article VI, Section 6, Houston City Charter, the effective date of the foregoing Resolution is \_\_\_\_\_, 2008.

*[Signature]*  
City Secretary

(Prepared by Legal Dept. *[Signature]*)

(SOI/fg 02/12/08

*[Signature]*  
Assistant City Attorney

(Requested by Marlene L. Gafrick, Director Department of Planning and Development)

(L.D. File No. 0610800007001)

G:\LAND\OMAR IZFARI\Historic preservation\historic district\HoustonHeightsHistoricDis

AYE	NO	
✓		MAYOR WHITE
••••	••••	COUNCIL MEMBERS
✓		LAWRENCE
✓		JOHNSON
✓		CLUTTERBUCK
✓		ADAMS
✓		SULLIVAN
✓		KHAN
✓		HOLM
✓		GARCIA
✓		RODRIGUEZ
✓		BROWN
✓		LOVELL
✓		NORIEGA
✓		GREEN
✓		JONES
CAPTION	ADOPTED	

CAPTION PUBLISHED IN DAILY COURT

REVIEW

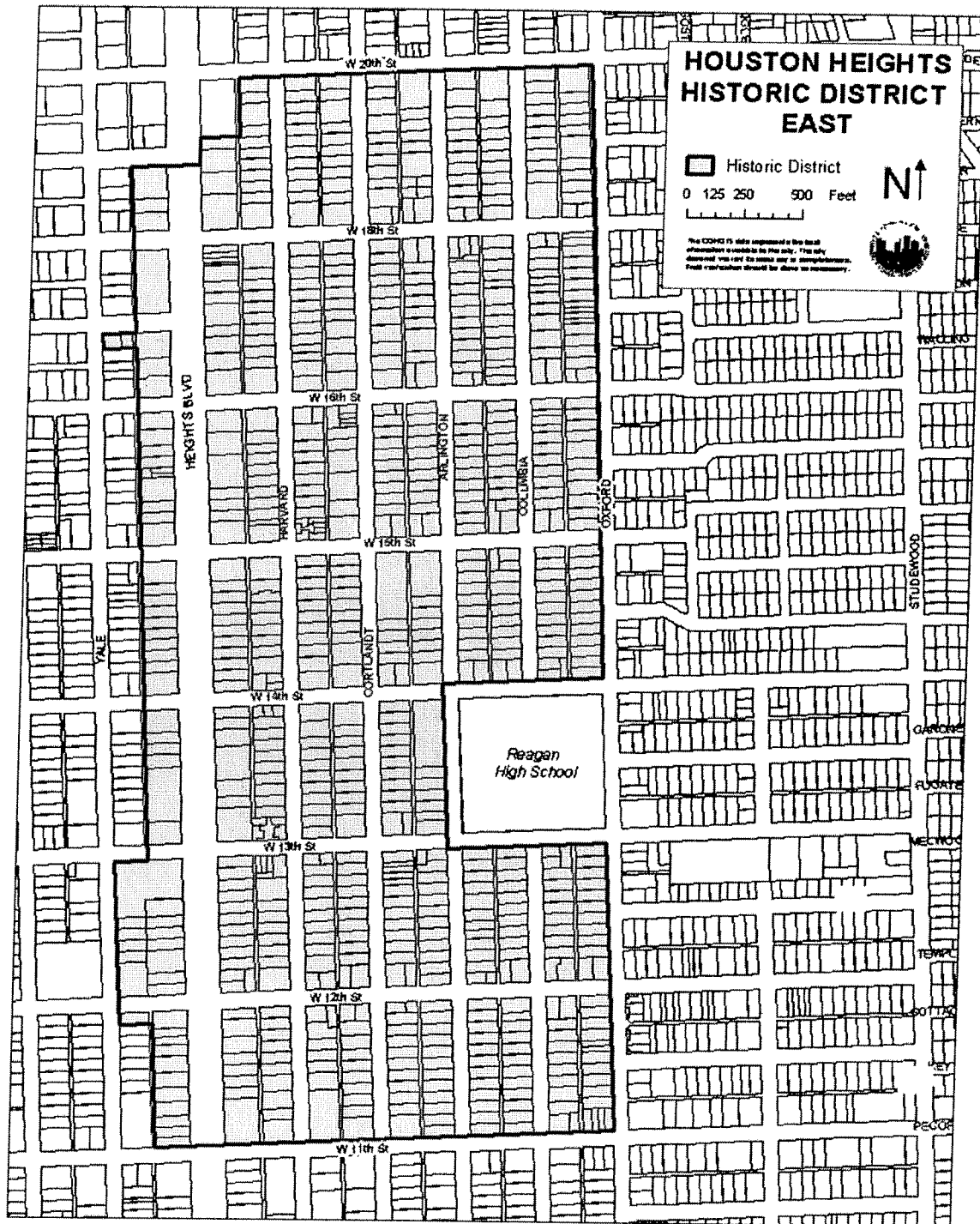
DATE: FEB 26 2008

# CITY OF HOUSTON

Houston Archaeological and Historical Commission

Planning & Development Dept.

## EXHIBIT A SITE LOCATION MAP HOUSTON HEIGHTS HISTORIC DISTRICT EAST HOUSTON, TEXAS



**EXHIBIT B**  
**INVENTORY OF HOUSTON HEIGHTS HISTORIC DISTRICT EAST**  
**HOUSTON, TEXAS**

**BUILDING STATUS LEGEND**

**C** Contributing  
**PC** Potentially Contributing  
**NC** Noncontributing  
**V** Vacant

\*Subdivision is 'Houston Heights' unless otherwise noted

PROPERTY ADDRESS		OWNER NAME	BLDG STATUS	CIRCA YR BLT	STYLE	BLK	LOT/TRACT*
1101	Arlington	Ricardo Andres Alarcon	PC	1915	Bungalow	198	Lt 12
1102	Arlington	Robert P Shissler & John Hamilton	PC	1915	Hipped Bungalow	197	Lt 13
1105	Arlington	Ronald G Malfara	PC	1920	Amer Foursquare	198	Lt 11
1108	Arlington	Donna C and Brian K Oakley	PC	1915	Bungalow Craftsman	197	Lt 14
1109	Arlington	Hilary Parr Cobb	PC	1915	Bungalow Craftsman	198	Lt 10
1112	Arlington	Damon J Thomas	PC	1915	Bungalow Craftsman	197	Lt 15
1115	Arlington	Laura and Steven J Folk	PC	1915	Bungalow	198	Lt 9
1116	Arlington	Marie D Congelio	PC	1915	Bungalow Craftsman	197	Lt 16
1117	Arlington	Mildred V Veillon	PC	1915	Bungalow	198	Lt 8
1118	Arlington	Carolyn F Jolet	C	1920	Bungalow Craftsman	197	Lt 17
1122	Arlington	Veronica and James Harrison	PC	1920	Bungalow	197	Lt 18
1123	Arlington	Alex and Elizabeth IrishKov	PC	1915	Bungalow	198	Lt 7
1127	Arlington	Michael L Dillard	PC	1940	Cottage	198	Lt 6
1128	Arlington	Bruce Wilcoxson & Elena Coates	PC	1920	Bungalow Craftsman	197	Lt 19
1129	Arlington	Mary Lou Ross	C	1910	Queen Anne Cottage	198	Lt 5
1130	Arlington	Scott W Brady and Connie B King	C	1915	Bungalow Craftsman	197	Lt 20
1133	Arlington	Kristal Kirksey	PC	1918	Bungalow Craftsman	198	Lt 4
1134	Arlington	Daniel Eggers	NC	2005	New Single Family	197	Lt 21
1137	Arlington	Donna Buchanan	C	1910	2-story Folk Victorian	198	Lt 3
1139	Arlington	Rebecca C and John B Kinchon	NC	1994	New Single Family	198	Lt 2
1140	Arlington	Arthur F and Sheila C Tybor	C	1910	Queen Anne Cottage	197	Lt 22
1141	Arlington	Steven J Wales and Peggy Landrum	C	1915	Hipped Bungalow	198	Lt 1
1142	Arlington	Robert D and Kimberly M Fontaine	NC	2005	New Single Family	197	Lt 23
1148	Arlington	Hamilton Homes LP	NC	2006	New Single Family	197	Lt 24
1201-1205	Arlington	Edward Rossi	C	1930	Brick Bungalow Duplex (Gar Apt PC)	189	Lt 12
1202	Arlington	Mark and Glenda Winburn	C	1905	Queen Anne Cottage	190	Lt 13
1206	Arlington	Sallie P Deiderich	C	1915	Hipped Bungalow	190	Lt 14
1207	Arlington	Sarah Newbery and Garrett Finney	PC	1915	Bungalow Craftsman Duplex	189	Lt 11
1211	Arlington	Davis F Henderson	NC	1992	New Single Family	189	Lt 10
1212	Arlington	Dean K and Laura Bernshausen	PC	1915	Hipped Bungalow	190	Lt 15
1213	Arlington	Deborah Cole	PC	1915	Bungalow Craftsman	189	Lt 9

**EXHIBIT B**  
**INVENTORY OF HOUSTON HEIGHTS HISTORIC DISTRICT EAST**  
**HOUSTON, TEXAS**

PROPERTY ADDRESS		OWNER NAME	BLDG STATUS	CIRCA YR BLT	STYLE	BLK	LOT/TRACT*
1215	Arlington	Andrew Edison and Donna Lax-Edison	V	Lot	Lot	189	Lt 8
1216	Arlington	Shadywood Homes LLC	NC	2007	New Single Family	190	Lt 16
1217	Arlington	Billy Steward	C	1910	Queen Anne Cottage	189	Lt 7
1219	Arlington	Patricia A Stump	C	1915	Bungalow Craftsman	189	Lt 6
1220	Arlington	Penelope Cerling	PC	1920	Hipped Bungalow	190	Tr 17
1222	Arlington	Celina R and William Joachim	PC	1920	Hipped Bungalow	190	Trs 17A & 18A
1224	Arlington	Steven J Kolodziej & Deborah A Nevinger	PC	1915	Bungalow Craftsman Duplex	190	Trs 18 & 19A
1228	Arlington	David Harbison and Suzy Strickland	PC	1920	Bungalow	190	Lt 20 & Tr 19
1231	Arlington	Jonathan B and Naomi Smulian	C	1920	Bungalow Craftsman	189	Lt 5
1232	Arlington	Jeffrey and Jessika Smith	PC	1906	Queen Anne Cottage Brick	190	Lt 21
1233	Arlington	Hans and Sharon Wang-Stockton	PC	1910	Queen Anne Cottage	189	Lt 4
1236	Arlington	David P McClain and Jane Schmitt	NC	1910	Bungalow Craftsman	190	Lt 22
1237	Arlington	Shirley A Swanson Living Trust	PC	1925	2-story Colonial Revival	189	Lt 3
1241	Arlington	Anne and Robert Kane	PC	1915	Foursquare Craftsman	189	Lt 2
1243	Arlington	Kenneth and Mary McClellan	C	1910	2-story Queen Anne	189	Lt 1
1244	Arlington	Jeb Cox	PC	1900	Queen Anne Cottage	190	Lt 23
1250	Arlington	Hans and Erda Hilmann	NC	1990	New Single Family	190	Lt 24
1301	Arlington	Natalie Miller and Jason B Schuren	PC	1905	Queen Anne Cottage	168	Lt 12 & Tr 11B
1305	Arlington	Darren and Katrina Smith	C	1915	Bungalow Craftsman	168	Tr 11 A
1307	Arlington	Albert and Karen Selmo	PC	1905	Queen Anne Cottage	168	Lt 10
1311	Arlington	Heidi Hagar	NC	1995	New Single Family	168	Lt 9
1313	Arlington	Connie C Stiles	NC	1992	New Single Family	168	Lt 8
1317	Arlington	Gustav Kopriva	NC	1920	Corner Store	168	Lt 7
1363	Arlington	Clark Bennett	NC	1984	Townhouse	168	Arlington Court Townhomes
1365	Arlington	Michael C Breckel	NC	1984	Townhouse	168	Arlington Court Townhomes
1367	Arlington	Alejandro and Lolita Colom	NC	1984	Townhouse	168	Arlington Court Townhomes
1369	Arlington	Thomas Bath	NC	1984	Townhouse	168	Arlington Court Townhomes
1371	Arlington	Timothy L Jackson	NC	1984	Townhouse	168	Arlington Court Townhomes
1373	Arlington	Teresa Bowman	NC	1984	Townhouse	168	Arlington Court Townhomes
1375	Arlington	Deborah Hassler	NC	1984	Townhouse	168	Arlington Court Townhomes
1377	Arlington	Charles Cobb & Randall Burgess	NC	1984	Townhouse	168	Arlington Court Townhomes
1379	Arlington	Rob Reasoner	NC	1984	Townhouse	168	Arlington Court Townhomes
1381	Arlington	Janet L Gibson and David E Proud	NC	1984	Townhouse	168	Arlington Court Townhomes

**EXHIBIT B**  
**INVENTORY OF HOUSTON HEIGHTS HISTORIC DISTRICT EAST**  
**HOUSTON, TEXAS**

PROPERTY ADDRESS		OWNER NAME	BLDG STATUS	CIRCA YR BLT	STYLE	BLK	LOT/TRACT*
1383	Arlington	Steven S Reilley	NC	1984	Townhouse	168	Arlington Court Townhomes
1385	Arlington	Julian J Samuel	NC	1984	Townhouse	168	Arlington Court Townhomes
1387	Arlington	William D Broido	NC	1984	Townhouse	168	Arlington Court Townhomes
1389	Arlington	Grace M Benson	NC	1984	Townhouse	168	Arlington Court Townhomes
1391	Arlington	John R Cliver	NC	1984	Townhouse	168	Arlington Court Townhomes
1393	Arlington	Cheryl Karian	NC	1984	Townhouse	168	Arlington Court Townhomes
1395	Arlington	Marcus Rice	NC	1984	Townhouse	168	Arlington Court Townhomes
1397	Arlington	Edward Jones Jr ETAL	NC	1984	Townhouse	168	Arlington Court Townhomes
1404	Arlington	Edward W Nunan	C	1905	Queen Anne	160	Trs 13 & 14
1407	Arlington	Joyce E White/Barbara A Grace & Joe E Wiggins Jr	C	1915	Bungalow	159	Lts 11 & 12 & E 60 Ft of Lts 13 & 14
1409	Arlington	Karen Ann Cambias	C	1915	Hipped Bungalow	159	Lt 10
1412	Arlington	Clark and Genie Conner	PC	1920	Bungalow Craftsman	160	Lt 15 & Tr 16A
1415	Arlington	Allegro Unlimited	C	1915	Hipped Bungalow Duplex	159	Lt 9
1416	Arlington	Monica McHenry	PC	1915	Bungalow Craftsman	160	Tr 16
1417	Arlington	Todd H Clovard and Kelly M Moneyhan	C	1915	Bungalow Craftsman	159	Lt 8
1418	Arlington	Una Mae Newman	PC	1915	Bungalow Craftsman	160	Lt 17
1422	Arlington	Jerome P Desale Jr	PC	1915	Bungalow Craftsman	160	Lt 18
1423	Arlington	Terry D Williamson	NC	1920	Hipped Bungalow	159	Lt 7
1426	Arlington	Glenn Baer Huebner	PC	1920	Bungalow	160	Lt 19
1427	Arlington	Immanuel Lutheran Church	V	Lot	Parking Lot	159	Lt 6
1431	Arlington	Immanuel Lutheran Church	V	Lot	Parking Lot	159	Lt 5
1447	Arlington	Immanuel Lutheran Church	C	1961	Neo-Gothic Sanctuary	159	Trs 1-6, 19-24
1432	Arlington	Jimmy Phillips III	PC	1915	Bungalow Craftsman	160	Lt 20
1436	Arlington	Stanley T Ryzinski & Melody Locke	C	1915	Bungalow Craftsman	160	Lt 21
1440	Arlington	William Lehnert	PC	1920	Bungalow Craftsman	160	Lt 22
1444	Arlington	Renee Zuelke	NC	1925	Bungalow	160	Lt 23
1448	Arlington	Houston Heights Investments	V	Lot	Lot	160	Lt 24
1502	Arlington	Bonnie Rippere Barton	C	1915	Bungalow Craftsman	137	Lt 13
1506	Arlington	Richard Silverman	C	1915	Bungalow Craftsman	137	Lt 14
1509	Arlington	Claire T Connors & Michael McEnrue	PC	1920	2-story Foursquare	138	Lt 10
1510	Arlington	Michael Dan Chandler	C	1915	Bungalow Craftsman	137	Lt 15
1512	Arlington	Benjamin McReynolds	C	1915	Bungalow Craftsman	137	Lt 16
1513	Arlington	Nancy Lusty	PC	1925	Bungalow Duplex	138	Lt 9
1519	Arlington	Juan and Irene Zapata	PC	1920	Bungalow Craftsman	138	Lt 8
1520	Arlington	Nancy Luthy and William Tate	NC	1994	New Single Family	137	Lt 17

**EXHIBIT B**  
**INVENTORY OF HOUSTON HEIGHTS HISTORIC DISTRICT EAST**  
**HOUSTON, TEXAS**

PROPERTY ADDRESS		OWNER NAME	BLDG STATUS	CIRCA YR BLT	STYLE	BLK	LOT/TRACT*
1521	Arlington	Apolinar Rojas	PC	1915	Bungalow	138	Lt 7
1522	Arlington	Laura Lopez & Mark Lewis	NC	1998	New Single Family	137	Lt 18
1525	Arlington	Beatrice Naranjo	NC	1997	New Single Family	138	Lt 6
1526	Arlington	Gregorio Balderas	C	1920	Bungalow Craftsman	137	Lt 19
1530	Arlington	SOHO Homes LLC	NC	2007	New Single Family	137	Lt 20
1531	Arlington	Jefferey Lundquist	C	1925	Bungalow	138	Lt 5
1533	Arlington	Derek Hargrove	PC	1930	Pedimented Bungalow	138	Lt 4
1534	Arlington	Susan and Mitchell McFarland	NC	2006	New Single Family	137	Lt 21
1535	Arlington	Viola G Luna	PC	1925	Bungalow	138	Lt 3
1538	Arlington	Kent and Susan Marsh	NC	1996	New Single Family	137	Lt 22
1543	Arlington	Viola G Luna	NC	1920	Bungalow Craftsman	138	Lt 2
1545	Arlington	Viola G Luna	PC	1925	Bungalow	138	Lt 1
1546	Arlington	Robert and Suzanne Killian	C	1905	Queen Anne Cottage	137	Lts 23 & 24
1602	Arlington	US Bank NA Trustee	NC	1920	Bungalow Remodeled	114	Lt 14
1603	Arlington	Rosalie and Ricardo Gamez	NC	2006	New Single Family	115	Trs 12A & 13A
1606	Arlington	John Bell	PC	1920	Bungalow	114	Lt 15
1607	Arlington	Simon Ball and Francis Perez	PC	1900	L-Plan Queen Anne	115	Lt 11
1609	Arlington	John Tyron Robinson	PC	1910	Queen Anne Cottage	115	Lt 10
1610	Arlington	Robert Keith	C	1915	National Folk Pyramidal	114	Lt 16
1615-1617	Arlington	John Tyron Robinson	PC	1920	Pedimented Bungalow Duplex	115	Lt 9
1616	Arlington	Mary Lynn Chapieski	NC	1992	New Single Family	114	Lt 17
1618	Arlington	Richard Markey and Adriana Santoni	NC	2006	New Single Family	114	Lt 18
1620	Arlington	Terry and Susan Wheeler	PC	1920	Bungalow Craftsman	114	Lt 19
1625	Arlington	Esther Blount	NC	2000	New Single Family	115	Lt 8
1626	Arlington	Sherri Bailey	NC	1997	New Single Family	114	Lts 20 & 21
1627	Arlington	Ted and Laura Christianson	PC	1910	Queen Anne Cottage	115	Lt 7
1633	Arlington	Abigail and Michael Scott	NC	1910	Queen Anne Cottage	115	Lt 6
1635	Arlington	Irvin and Lisa Waldman	PC	1910	Queen Anne Cottage	115	Lt 5
1636	Arlington	Melinda Patterson and John Bednarczyx	NC	2003	New Single Family	114	Lt 22
1638	Arlington	Kriss Keith Killion	C	1900	Queen Anne	114	Trs 23 & 23 A
1639	Arlington	SOHO Homes LLC	NC	2007	New Single Family	115	Lt 4
1642	Arlington	Veronica Bagnato	NC	1909	Craftsman Remodeled	114	Lt 24
1643	Arlington	Joe Bialas	PC	1925	Bungalow	115	Lt 3
1646	Arlington	William Gay	PC	1920	Bungalow Craftsman	114	25A
1801	Arlington	Robert and Debra Taylor	NC	2001	New Single Family	106	Trs 12 & 13
1808	Arlington	Kris and Amanda Hanson	NC	2004	New Single Family	107	Lt 15

**EXHIBIT B**  
**INVENTORY OF HOUSTON HEIGHTS HISTORIC DISTRICT EAST**  
**HOUSTON, TEXAS**

PROPERTY ADDRESS		OWNER NAME	BLDG STATUS	CIRCA YR BLT	STYLE	BLK	LOT/TRACT*
1811	Arlington	Craig and Catherine Harris	NC	2006	New Single Family	106	Tr 11, 11A
1812	Arlington	Scott and Christine Young	C	1915	Bungalow Craftsman	106	Lt 16
1815	Arlington	Laura and Richard Wolf	NC	2006	New Single Family	106	Tr 10, 10A
1816	Arlington	Paul Matejowsky Est of c/o Lloyd Don Matejowsky	C	1915	Bungalow	107	Lt 17
1819	Arlington	Dale B Johnson	PC	1905	Queen Anne Cottage	106	Lts 8 & 9, Tr 10B
1820	Arlington	Margarito and Esther Gonzales	PC	1905	Queen Anne Cottage	107	Lt 18
1822	Arlington	David Graf	PC	1910	Queen Anne Cottage	107	Lt 19
1825	Arlington	Horace Kelly Jr. ETAL	PC	1915	Craftsman	106	Lt 7
1827	Arlington	Keith and Christine McKnight	PC	1910	Hipped Bungalow	106	Lt 6
1828	Arlington	Mark and Melissan Dolan	NC	2007	New Single Family	107	Lt 20
1829	Arlington	Horace Kelly Jr. ETAL	NC	1978	Metal Warehouse	106	Lt 5
1830	Arlington	Simon Guscott	NC	2005	New Single Family	107	Lt 21
1831	Arlington	Horace Kelly Jr. ETAL	NC	1983	Metal Warehouse	106	Lt 4
1838	Arlington	Kelli Considina and Sherri Brudner	NC	2005	New Single Family	107	Lt 22
1840	Arlington	Kelli Considina and Sherri Brudner	PC	1920	Bungalow	107	Lt 23
1846	Arlington	Carol Ann Ursell & Marlene Dancer Adams	C	1915	Bungalow Craftsman	107	Lt 24 & Tr 25A
1101	Columbia	Jaime and Jose Garza	PC	1915	Bungalow	197	Lt 12
1102	Columbia	William Brandenberger	PC	1925	Bungalow Craftsman	196	Lt 13 & 14A
1106	Columbia	Richard Vickrey and Gary Barnett	PC	1915	Bungalow Craftsman	196	Trs 14 & 15A
1107	Columbia	Rachel Hecker	PC	1920	Bungalow	197	Lt 11
1109	Columbia	Marcella Mary Colbert	PC	1910	Gable-front Cottage	197	Lt 10
1116	Columbia	Roger and Hannah Pederson	NC	1920	Bungalow	196	Lt 16 & Trs 15, 17
1117	Columbia	Jane Bowman	PC	1925	Brick bungalow	197	Lt 9
1119	Columbia	Randall Eakens	NC	1988	Single Family	197	Lt 8
1120	Columbia	Tesa Wilkins	PC	1925	Bungalow	196	Tr 17A
1121	Columbia	Nicole Wolf	PC	1930	Brick bungalow	197	Lt 7
1123	Columbia	Karen Singer	C	1915	Bungalow Craftsman	197	Lt 6
1124	Columbia	Michael and Tippawan Spratt	NC	1996	New Single Family	196	Lt 18
1128	Columbia	Reza and Gloria Behazino	PC	1910	Queen Anne Cottage	196	Lt 19
1131	Columbia	Mark and Elizabeth Smith	C	1915	Bungalow Craftsman	197	Lt 5
1132	Columbia	Robert and Bernadette Mcleroy	PC	1920	Bungalow	196	Lt 20
1133	Columbia	Michael Peterson & Maria Verzbolovskis	C	1910	Bungalow	197	Lt 4
1136	Columbia	David Sprecher	PC	1920	Bungalow	196	Lt 21
1135	Columbia	Pamela and R E Halliburton	PC	1915	Bungalow	197	Lt 3
1138	Columbia	Laura Harrison	NC	1910	Queen Anne Cottage	196	Lt 22
1141	Columbia	Matthew Wright	C	1925	Bungalow	197	Lt 2

**EXHIBIT B**  
**INVENTORY OF HOUSTON HEIGHTS HISTORIC DISTRICT EAST**  
**HOUSTON, TEXAS**

PROPERTY ADDRESS		OWNER NAME	BLDG STATUS	CIRCA YR BLT	STYLE	BLK	LOT/TRACT*
1145	Columbia	Thomas Kotsinadelis	PC	1900	Queen Anne Cottage	197	Lt 1 & Tr 2A
1201 A & B	Columbia	Heights Partners LTD	PC	1900	L-plan Cottage	190	Trs 11 & 12
1208	Columbia	Karie and Andrew Costa	NC	2007	New Single Family	191	Lt 15
1209	Columbia	Cecil Mickel	PC	1910	Queen Anne Cottage	190	Lt 10
1212	Columbia	Jennifer Klein	C	1925	Bungalow	191	Lt 16
1215	Columbia	Shadywood Homes LLC	NC	2007	New Single Family	190	Lt 9
1217	Columbia	Sandra Acosta	PC	1920	Amer Foursquare Duplex	190	Lt 8
1221	Columbia	Lorenzo and Melinda Gaskill	PC	1915	2-story Craftsman	190	Lt 7
1222	Columbia	Cheryl Ann Johnson	PC	1920	Bungalow Craftsman	191	Lt 17
1224	Columbia	Kathleen Powell	PC	1915	Gable-front Bungalow	191	Lt 18
1225	Columbia	Marshall Heins	PC	1910	Bungalow Craftsman	190	Lt 6
1226	Columbia	Glynda Louis Robbins	PC	1920	Bungalow	191	Lt 19
1229	Columbia	Robert C Spott Jr	PC	1915	Bungalow Craftsman	190	Lt 5
1231	Columbia	Matthew Sullivan & Molly Gimmer	C	1915	Gable-front Bungalow	190	Lt 4
1232	Columbia	Glynda Robbins	PC	1915	Bungalow Craftsman	191	Lt 20
1235	Columbia	Richard C Abraham ETAL	PC	1915	Bungalow Craftsman	190	Lt 3
1236	Columbia	George Petter	PC	1915	Bungalow Craftsman Stucco	191	Lt 21
1240	Columbia	Kevin and Stephanie Yankowski	NC	2005	New Single Family	191	Lt 22
1243	Columbia	Nora Alt	PC	1915	Bungalow Craftsman	190	Lt 2
1244	Columbia	Jeffrey Lauve	PC	1925	Pedimented Bungalow	191	Tr 23 A
1246	Columbia	Amber and Michael Lewis	V	Lot	Lot	191	Lt 24
1247	Columbia	Benefiel Family Trust	PC	1915	Bungalow	190	Lt 1
1402	Columbia	Porfirio and Honora Diaz	NC	1915	Queen Anne Remodeled	161	Tr 13
1406	Columbia	Sharon and Christian Sheridan	PC	1915	Bungalow Craftsman	161	Lt 14
1410	Columbia	Susan Poznich	NC	1957	Ranch	161	Lt 15
1411	Columbia	Barry Cooper	NC	1993	New Single Family	160	Lt 10
1413	Columbia	Steven and Nancy Stieg	C	1915	Bungalow Craftsman	160	Lt 9
1415	Columbia	Allegro Unlimited	V	Lot	Lot	160	Lt 8
1418	Columbia	Veronica Rudek	PC	1915	Bungalow Craftsman	161	Lt 16
1420	Columbia	George T. Cunningham	PC	1915	Bungalow Craftsman	161	Lt 17
1421	Columbia	Anita Goff and Denise Martin	PC	1910	Hipped-roof Cottage	160	Lt 7
1424	Columbia	Mario Hurtado and Maria Ramos	NC	1992	New Single Family	161	Lt 18
1425	Columbia	Robert Alban	PC	1920	Bungalow	160	Lt 6
1426	Columbia	Patricia Walzel	NC	1992	Single Family	161	Lt 19
1429	Columbia	Max Beauregard	PC	1930	2-story Colonial Revival	160	Tr 5 A
1430	Columbia	Michael Lefkowitz and Deborah Reid	C	1920	Bungalow Craftsman	161	Lt 20

**EXHIBIT B**  
**INVENTORY OF HOUSTON HEIGHTS HISTORIC DISTRICT EAST**  
**HOUSTON, TEXAS**

PROPERTY ADDRESS		OWNER NAME	BLDG STATUS	CIRCA YR BLT	STYLE	BLK	LOT/TRACT*
1431	Columbia	Jens and Russell Larsen	C	1905	Folk Cottage	160	Lt 4 and Tr 5
1433	Columbia	Mark and Kathleen Williamson	PC	1908	Craftsman	160	Lt 3
1436	Columbia	John Sapp	NC	2006	New Single Family	161	Lt 21
1440	Columbia	Paul Fruge	PC	1925	Bungalow	161	Lt 22
1443	Columbia	James Shepherd	C	1920	Bungalow	160	Lt 2
1444	Columbia	Ben McClure	PC	1930	Craftsman Duplex	161	Lt 23
1445	Columbia	Edgar Feusse	PC	1930	Brick Bungalow Duplex	160	Trs 1 & 2 A
1448	Columbia	Andrew J and Sabrina Murphy	C	1920	Bungalow	161	Lt 24
1504	Columbia	Lisa Marie Russell	PC	1915	Craftsman	136	Lts 13 & 14
1510	Columbia	Gordon Hagendorf & Marc Cutler	NC	1915	Craftsman Remodeled	136	Lt 15
1511	Columbia	Bryan Drohan	PC	1915	Bungalow Craftsman	137	Lt 10
1514	Columbia	Mari Gianukos	PC	1920	Bungalow Craftsman	136	Lt 16
1515	Columbia	Scott Rodabaugh	PC	1920	Bungalow Craftsman	137	Lt 9
1517	Columbia	Clementina and Juan Lopez	NC	1958	Brick Ranch	137	Lt 8
1518	Columbia	Eric and Michelle Chrst	PC	1925	Bungalow	136	Lt 17
1520	Columbia	Mark Emerson Townsend	PC	1920	Bungalow	136	Lt 18
1521	Columbia	Brice Laird	PC	1925	Bungalow Craftsman	137	Lt 7
1522	Columbia	Walter Wayne Shoelman	PC	1905	Gable-front Cottage	136	Lt 19
1522	Columbia	Walter Wayne Shoelman	C	1905	Hitching Posts	136	Lt 19
1524	Columbia	Sarah Foster	PC	1925	Bungalow	136	Lt 20
1527	Columbia	Saragosa Ayala	PC	1915	Bungalow Craftsman	137	Lt 6
1531	Columbia	William Crouch	PC	1905	Queen Anne Cottage	137	Lt 5
1535	Columbia	Julye Nugent	PC	1915	Bungalow	137	Lt 4
1536	Columbia	Hilda Drohan	PC	1930	English Cottage	136	Lt 21
1538	Columbia	David Lenard and Leslie Barnes	NC	1999	New Single Family	136	S 32 Ft of Lt 22
1539	Columbia	Robert Earl Cooke	PC	1915	Bungalow Craftsman	137	Lt 3
1540	Columbia	Lawrence and Ernestine Sandavol	PC	1925	Bungalow Craftsman	136	N 18 Ft Lt 22 & S 20 Ft Lt 23
1543	Columbia	William Crouch	C	1920	Bungalow	137	Lt 2
1601	Columbia	Peggy Gilbert	NC	2005	New Single Family	114	Lt 13 Houston Heights 35th Amend
1603	Columbia	Craig and Kristen Parks	NC	2005	New Single Family	114	Lt 12A Houston Heights 35th Amend
1605	Columbia	Christopher and Jennifer Paschke	NC	2006	New Single Family	114	Lt 12 Houston Heights 35th Amend
1609	Columbia	Pamela Radford and Stacie Cokinos	NC	2005	New Single Family	114	Lt 11
1611	Columbia	Alfred and Josephine Parrish	PC	1920	Bungalow Craftsman	114	Lt 10
1612	Columbia	Mark Bouzek Deborah Parks	NC	2006	New Single Family	113	Lt 16
1615	Columbia	Evelyn Wilkerson	PC	1920	Bungalow Craftsman	114	Lt 9
1616	Columbia	Mario and Mary Galicia	NC	1920	2-story Remodeled	113	Lt 17 & Tr 18

**EXHIBIT B**  
**INVENTORY OF HOUSTON HEIGHTS HISTORIC DISTRICT EAST**  
**HOUSTON, TEXAS**

PROPERTY ADDRESS		OWNER NAME	BLDG STATUS	CIRCA YR BLT	STYLE	BLK	LOT/TRACT*
1617	Columbia	Barbara Beutinagel	PC	1905	Pyramid-roof Cottage	114	Lt 8
1620	Columbia	Thomas and Janet Buchheit	NC	1989	New Single Family	113	Lt 19 & Tr 18A
1621	Columbia	Barbara Beutinagel	NC	1992	New Single Family	114	Lt 7
1628	Columbia	Charles Richardson	NC	2001	New Single Family	113	Lt 20
1629	Columbia	Donna Thomas	NC	1994	New Single Family	114	Lt 6 & S 1/2 Lt 5
1630	Columbia	Christopher Chamblee	V	Lot	Lot	113	Lt 21
1634	Columbia	Robert J Filteau	NC	1996	Single Family	113	S 32 Ft of Lt 22
1635	Columbia	Diane Manning	NC	2001	New Single Family	114	1 Columbia Heights Garden Homes
1637	Columbia	Pedro Elizondo	C	1915	Bungalow Craftsman	114	N 42 Ft of Lt 4
1640	Columbia	Kenneth Allen	NC	1997	Single Family	113	N 18 ft Lt 22 & S 16 Ft Lt 23
1641	Columbia	Susan M Shofner and William Y Hardy	PC	1920	Bungalow	114	Lt 3
1642	Columbia	Danny and Barbara Simmons	NC	1997	Single Family	113	N 34 Ft of Lt 23
1644	Columbia	Sandra Nicholson	PC	1920	Bungalow Craftsman	113	Lt 24
1647	Columbia	Ronald and Trudy Mitchell	NC	1982	Single Family	114	Lt 2
1648	Columbia	LKT Corp	PC	1920	Bungalow	113	Lt 25
1650-1652	Columbia	Anna Tokarska	PC	1925	Craftsman Duplex	113	Tr 26A
1651	Columbia	Elizabeth and Kenneth Babcock	C	1900	Queen Anne Cottage	114	Lt 1
1801	Columbia	Deborah Allday	PC	1915	Gable-front Bungalow	107	Lt 13
1803	Columbia	Henry Cropper	PC	1920	Bungalow Craftsman	107	Lt 12
1809	Columbia	Robert and Kathryn Vidal	PC	1920	Bungalow Craftsman	107	Lt 11
1814	Columbia	David and Alice Parker	PC	1910	Hipped-roof Cottage	108	Lt 17
1815	Columbia	Alice McLott and Dana Shinn	C	1915	Bungalow Craftsman	107	Lt 10
1817	Columbia	John and Monica Gardner	C	1915	Bungalow Craftsman	107	Lt 9
1819	Columbia	Daniel and Mary Case	PC	1910	Queen Anne Cottage	107	Lt 8
1820	Columbia	Patricia Fine and John Pavlicek	PC	1915	Gable-front Bungalow	108	Lt 18
1821	Columbia	Nancy Carpenter	PC	1910	Queen Anne Cottage	107	Lt 7
1823	Columbia	John and Meri Crain	PC	1910	Queen Anne Cottage	107	Lt 6
1826	Columbia	Joseph and Mitzi Reynolds	V	Lot	Lot	108	Lt 19
1832	Columbia	Thomas William Christian	PC	1915	Bungalow Craftsman	108	Lt 20
1834	Columbia	Maria Wunderlich	PC	1920	Bungalow Craftsman	108	Lt 21
1835	Columbia	Eugene Fong	PC	1915	Craftsman Cottage	107	Lt 5
1836	Columbia	Antonio Arriaga	NC	1965	Single Family	108	Lt 22
1836½	Columbia	Anthony and Angelita Arriaga Jr	PC	1910	Bungalow Craftsman	108	Lt 23
1842	Columbia	Danny and Kathleen High	C	1925	Bungalow Craftsman	108	Lt 24
1844	Columbia	Susan Noe	PC	1925	Pedimented Bungalow	108	Lt 25
1851	Columbia	Charles Mayeux and Phelix Byrd	PC	1915	Bungalow Craftsman	107	Lt 4 & Tr 3 B

**EXHIBIT B**  
**INVENTORY OF HOUSTON HEIGHTS HISTORIC DISTRICT EAST**  
**HOUSTON, TEXAS**

PROPERTY ADDRESS		OWNER NAME	BLDG STATUS	CIRCA YR BLT	STYLE	BLK	LOT/TRACT*
1101	Cortlandt	Joseph Conti Family LTD PS	NC	1995	New Single Family	199	See 215 E 11th St
1110	Cortlandt	Jane Mahmood	C	1920	Bungalow Craftsman	198	Lt 15
1109	Cortlandt	Melody Jackson and John Scates	PC	1920	Bungalow Craftsman	199	Lt 10
1111	Cortlandt	John Russell Denson	C	1915	Bungalow Craftsman	199	Lt 9
1113	Cortlandt	Russell Denson	PC	1920	English Cottage	199	Lt 8
1114	Cortlandt	George O. John Jr and Ann W John	PC	1920	Bungalow Craftsman	198	Lt 16
1118	Cortlandt	Cicel G Mickel	PC	1920	Bungalow Craftsman	198	Lt 17
1121	Cortlandt	Marzia Faggini and Manuel Terranova	NC	2005	New Single Family	199	Lt 7
1122	Cortlandt	Allegro Unlimited	NC	2007	New Single Family	198	Lt 18
1125	Cortlandt	Charles R and Margie Denson	PC	1920	Bungalow Craftsman	199	Lt 6
1128	Cortlandt	Donald Sanders and Katherine Butler	C	1920	Bungalow Craftsman	198	Lt 19
1129	Cortlandt	Charles R and Margie Denson	PC	1920	Amer Foursquare	199	Lt 5
1130	Cortlandt	Joy K Stapp	NC	1930	Bungalow Craftsman	198	Lt 20
1135	Cortlandt	Anthony L Dasher	PC	1920	Bungalow Craftsman	199	Lt 4 & Tr 3 A
1136	Cortlandt	Lucian and Caroline Sterner	NC	1992	New Single Family	198	Lt 21
1138	Cortlandt	E L Evans and G Y Evans	PC	1920	Bungalow Craftsman	198	Lt 22
1139	Cortlandt	Charles R and Margie Denson	C	1920	Bungalow Craftsman	199	Trs 2B & 3
1142	Cortlandt	James P Mc Reynolds	NC	1997	New Single Family	198	Lt 23
1150	Cortlandt	Joy Kristine Stapp	C	1920	Pedimented Bungalow	198	Tr 24A
1206	Cortlandt	Piers Gormly	C	1907	Modified L-Plan Queen Anne	189	Trs 13 & 14
1207	Cortlandt	Timothy James Shepherd	C	1910	Modified L-Plan Queen Anne	188	Lt 10
1208	Cortlandt	Mary B Mathis	PC	1915	Modified L-Plan Queen Anne	189	Lt 15
1209	Cortlandt	Mark and Shawna Hudson	C	1910	Modified L-Plan Queen Anne	188	Lt 9
1210	Cortlandt	Aaron and Ann Dick	PC	1920	Bungalow	189	Lt 16
1218	Cortlandt	Alex and Elizabeth IrishKov	C	1910	L-Plan Queen Anne	189	Lt 17
1219	Cortlandt	Richard and Amanda A Anhorn	NC	2000	New Single Family	188	Lt 8
1222	Cortlandt	Kenneth and Emily Cole	NC	2007	New Single Family	189	Lt 18
1223	Cortlandt	Kevin H Cox	NC	1967	Single Family	188	Lt 7
1226	Cortlandt	Edward Creasy	C	1920	Bungalow Craftsman	189	Lt 19
1227	Cortlandt	Charles Foster and Lily Chen	NC	2007	New Single Family	188	Lt 6
1229	Cortlandt	Cheryl and Thad Pugh	PC	1920	Bungalow Craftsman	188	Lt 5
1230	Cortlandt	Michael R Shelton	NC	1920	Bungalow Remodeled	189	Lt 20
1233	Cortlandt	RH Trust	NC	2002	New Single Family	188	Lt 4
1234	Cortlandt	Edward J Creasy	PC	1920	2-story Craftsman	189	Lt 21
1236	Cortlandt	Steven and Catherine Haas	NC	1999	New Single Family	189	Lt 22

**EXHIBIT B**  
**INVENTORY OF HOUSTON HEIGHTS HISTORIC DISTRICT EAST**  
**HOUSTON, TEXAS**

PROPERTY ADDRESS		OWNER NAME	BLDG STATUS	CIRCA YR BLT	STYLE	BLK	LOT/TRACT*
1239	Cortlandt	John Odard and Pia Byrd	C	1910	Folk Victorian	188	Lt 3
1242	Cortlandt	Paul and Christina P Sanchez	NC	1999	New Single Family	189	Trs 22A & 23B
1243	Cortlandt	Current Owner	NC	2005	New Single Family	188	Lt 2
1244	Cortlandt	Renwick Homes INC	NC	2001	New Single Family	189	Tr 23 A
1246	Cortlandt	Waverly R and Pamela Holley	V	Lot	Lot	189	Tr 23 Lt 24
1245	Cortlandt	Charles A and Cordelia E Martin	C	1910	Bungalow Craftsman	188	Lt 1
1303	Cortlandt	Keneth S and Anne O Culotta	PC	1915	2-story Craftsman	169	Lts 11 & 12
1304	Cortlandt	Mary S Hagle and Daniel Kornberg	C	1905	Modified L-Plan Queen Anne	168	Trs 13 A & 14 A
1309	Cortlandt	Jose David Maya	PC	1920	Bungalow	169	Lt 10
1312	Cortlandt	James and Barbara Potter	NC	1920	Folk Victorian	168	Lt 15
1315	Cortlandt	Eileen C and Ronald Reed	NC	1991	New Single Family	160	Lt 9
1316	Cortlandt	Robert P and Elida Weber	NC	1992	New Single Family	168	Lt 16
1317	Cortlandt	Karen L McCleary	PC	1910	L-Plan Queen Anne	169	Lt 8
1318	Cortlandt	John and Terri P Arnold	NC	1994	New Single Family	168	Lt 17
1321	Cortlandt	Loring P White and Susan H Guidry	NC	1989	New Single Family	169	Lt 7
1322	Cortlandt	John Edgard Robles	C	1920	Bungalow	168	Lt 18
1324	Cortlandt	Current Owner	NC	1960	Fourplex	168	Lt 19
1325	Cortlandt	James Mishler	NC	2003	New Single Family	169	Lt 6 & 6 Ft of Lt 5
1326	Cortlandt	James and Patricia Mayo	NC	2004	New Single Family	168	Lt 20
1327	Cortlandt	William and Shannon Terrill	NC	2003	New Single Family	169	Tr 5 & S 3 Ft of Lt 4
1328	Cortlandt	Roy J Newton and Gary T Bohnert	PC	1920	Cottage	168	Lt 21
1330	Cortlandt	Roy J Newton and Gary T Bohnert	PC	1920	Craftsman	168	Lt 22
1332	Cortlandt	Gary T Bohnert and Roy J Newton	PC	1920	Craftsman	168	Lt 23
1333	Cortlandt	Trudy Nelson	C	1910	Bungalow Craftsman	169	N 47 Ft of Lt 4
1335	Cortlandt	Nancy L Lopez	PC	1916	Bungalow Craftsman	169	Lt 3
1341	Cortlandt	Dennis L Powell Shelton Michael	C	1920	Tudor Revival Brick Fourplex	169	Lts 1 & 2
1401	Cortlandt	Robert and Sherry Davis	C	1903	Modified L-Plan Queen Anne	158	Lts 11 & 12
1406	Cortlandt	Tommy B Simpson III	NC	1915	Bungalow Craftsman	159	Lt 15
1408	Cortlandt	Jose C Tello and Georgina Key	PC	1915	2-story Craftsman	159	Lt 16
1410	Cortlandt	William Charles Calvin	PC	1913	Bungalow Craftsman	159	Lt 17
1411	Cortlandt	Robert G Davis	PC	1908	Bungalow Craftsman	158	Lts 9 & 10
1415	Cortlandt	Robert G Davis	C	1910	Modified Queen Anne	158	Lts 9 & 10
1417	Cortlandt	Joseph and Katherine Bruskotter	V	Lot	Lot	158	Lt 8
1421	Cortlandt	James Leder	PC	1930	Bungalow	158	Lt 7
1423	Cortlandt	Coletta J Bosworth	C	1910	Bungalow Craftsman	158	Lt 6

**EXHIBIT B**  
**INVENTORY OF HOUSTON HEIGHTS HISTORIC DISTRICT EAST**  
**HOUSTON, TEXAS**

PROPERTY ADDRESS		OWNER NAME	BLDG STATUS	CIRCA YR BLT	STYLE	BLK	LOT/TRACT*
1424	Cortlandt	Immanuel Lutheran church	PC	1925	Bungalow	159	Lt 18
1425	Cortlandt	Dell J Lewis Bush	PC	1915	Queen Anne	158	Lt 5
1435	Cortlandt	Wesley W Felts	PC	1908	Bungalow Craftsman	158	Lt 4
1437	Cortlandt	Bobby and Sandra Lloyd	NC	1905	Modified L-Plan	158	Lt 3
1440	Cortlandt	Immanuel Lutheran Church	PC	1949	Barrel Roof Gymnasium/Parish Hall	159	Trs 1-4, 19-24
1445	Cortlandt	Derek and Jessica Rosales	NC	2002	New Single Family	158	Lt 2
1447	Cortlandt	Manuel Arellano	PC	1905	Modified L-Plan	158	Lt 1
1448	Cortlandt	Immanuel Lutheran Church	C	1932	Gothic Revival Sanctuary	159	Trs 1-4, 19-24
1501	Cortlandt	Michael T Batterson	NC	1900	Folk Victorian	139	Lts 11 & 12
1504	Cortlandt	Corum Properties LTD	PC	1930	Gothic Revival	138	See 301 E 15th St
1508	Cortlandt	Lewis A Marks and Laura Lopez	C	1920	Bungalow Craftsman	138	Lt 15
1509	Cortlandt	Michael T Batterson	PC	1910	Queen Anne	139	Lt 10 & Tr 9
1515	Cortlandt	Michael T Batterson	NC	2008	New Single Family	139	Lts 7, 8 & Tr 9A
1517	Cortlandt	Michael T Batterson	C	1905	L-Plan	139	Lts 7, 8 & Tr 9A
1516	Cortlandt	Santiago Cortez	PC	1920	Bungalow Craftsman	138	Lt 16
1518	Cortlandt	Desiree K Miller	PC	1920	Bungalow Craftsman Duplex	138	Lt 17
1522	Cortlandt	James R Wilder	PC	1920	Bungalow Craftsman	138	Lt 18
1525	Cortlandt	Nora J Dobin and Christine E Wolf	C	1911	Tudor Revival	139	Lts 5 & 6
1526	Cortlandt	Mary Rachel Castillo Buzo	PC	1905	Modified L-Plan Queen Anne	138	Lt 19
1528	Cortlandt	Rosa Rodriguez Robles	PC	1920	Bungalow	138	Lt 20
1534	Cortlandt	Scott and Sarah Miller	PC	1920	Bungalow Craftsman	138	Lt 21
1541	Cortlandt	Dennis Ray Martin	PC	1915	Bungalow	139	Lt 4
1544	Cortlandt	Annette K Demeritt	PC	1920	Bungalow Craftsman	138	Lt 22
1545	Cortlandt	Catherine Oneill and Ty Wengler	PC	1915	Bungalow Craftsman	139	Lt 3
1546	Cortlandt	Charles Calvert Thomas	PC	1920	Bungalow	138	Lt 23
1547	Cortlandt	A Ross Davis Jr.	NC	1984	Townhouse	139	Tr 2B-1
1548	Cortlandt	M T Ager	PC	1940	English Cottage	138	Tr 24 A
1549	Cortlandt	Brian Nicholson Day	NC	1983	Townhouse	139	Tr 2 B
1551	Cortlandt	Johnny L Drew	NC	1984	Townhouse	139	Tr 1 B & 2 C
1553	Cortlandt	Nancy L Smith	NC	1984	Townhouse	139	Lt 10
1603	Cortlandt	Susan Marie Krause and Margot Perez	NC	1910	Folk Victorian	116	Lt 13 & Tr 12A
1607	Cortlandt	Jeannine Nuzzi	NC	2005	New Single Family	116	Lt 11 & Tr 12
1610	Cortlandt	Liliana and Lucian Borcea	PC	1920	Bungalow	115	Trs 15 A & 16A
1615	Cortlandt	Michael and Gayle Klaybor	NC	1927	Bungalow Remodeled	116	Lt 10 & Tr 9A
1616	Cortlandt	Marcus Wagner	PC	1913	Modified L-Plan Queen Anne/ Craftsman	115	Lt 17 & Tr 16

**EXHIBIT B**  
**INVENTORY OF HOUSTON HEIGHTS HISTORIC DISTRICT EAST**  
**HOUSTON, TEXAS**

PROPERTY ADDRESS		OWNER NAME	BLDG STATUS	CIRCA YR BLT	STYLE	BLK	LOT/TRACT*
1619	Cortlandt	Horace E Kelley Jr. and Tr etal	NC	1916	Bungalow Remodeled	116	Lt 8 & Tr 9
1620	Cortlandt	Gregory J Reid	C	1915	Bungalow Craftsman	115	Lt 18 & Tr 19
1626	Cortlandt	Michael J Pierce and Alexandria J Erdely Pierce	PC	1917	Modified Queen Anne	115	Lt 20 & Tr 19A
1627	Cortlandt	Hal Edward Williams and Gary W Norton	NC	1994	New Single Family	116	Lt 7 & S 3ft of Lt 6
1629	Cortlandt	Ruth S Davis	PC	1915	Modified L-Plan	116	N 47 Ft of Lt 6
1630	Cortlandt	Joseph S Bleakie	PC	1917	Bungalow Craftsman	115	Lt 21
1635	Cortlandt	Charles R Smith	NC	1920	Bungalow Craftsman	116	Lt 5
1636	Cortlandt	Steven and Adriana Borsos	V	Lot	Lot	115	Lt 22
1637	Cortlandt	Horace E Kelley Jr. and Tr etal	C	1915	Bungalow Craftsman	116	Lt 4
1638	Cortlandt	Scott and Jennifer Saltsman	PC	1918	Bungalow Craftsman	115	Lt 23
1641	Cortlandt	Lisa A Moscarelli	C	1915	Bungalow Craftsman	116	Lt 3
1642	Cortlandt	Andrea L Farr	PC	1918	Bungalow Craftsman	115	Lt 24
1647-49	Cortlandt	H. L. Hart	PC	1915	Bungalow Craftsman Duplex	116	Lt 2
1648	Cortlandt	Jenny Holbrook	PC	1910	Queen Anne Cottage	115	Lt 25
1650	Cortlandt	Pedro M and Carol J Turpeau	PC	1937	Colonial Revival	115	Lt 26
1651	Cortlandt	Donald Sexton	PC	1905	Modified L-Plan Queen Anne	116	Lt 1
1801	Cortlandt	Heights Capital LLC	NC	1955	Apartments	105	Lt 13, Tr 12A
1802	Cortlandt	Koon Chris C Aderholt Sarah L	PC	1915	Amer Foursquare	106	Trs 14, 15B
1810	Cortlandt	Margaret Anne Rundell	PC	1915	National Folk Pyramidal Craftsman	106	Lt 16, Tr 15
1813	Cortlandt	Juanita Martinez	PC	1920	Bungalow	105	Trs 11, 12 A
1815	Cortlandt	Mary F Quinn	PC	1920	Bungalow	105	Trs 10 & 11A
1816	Cortlandt	Philip J and Theordora Hardy	C	1930	Modified Foursquare Brick	106	Lt 17 & S 5ft of Lt 18
1817	Cortlandt	Mary F Quinn	PC	1920	Bungalow	105	Lt 9, Tr 10A
1819	Cortlandt	Nellie L Reeder	PC	1920	Hipped Bungalow	105	Lt 8
1820	Cortlandt	Lisa Vanzant	C	1915	Bungalow	106	N 45 Ft of Lt 18
1821	Cortlandt	Robert D Medeiros and Thuy Hong Huynh	NC	1968	Cottage	105	Lt 7
1822	Cortlandt	Randall G Newman and Jeffrey C Newman	PC	1920	Bungalow Craftsman	106	Lt 19
1828	Cortlandt	Stephen and Linda Jovicich	PC	1920	Bungalow	106	Lt 20
1829	Cortlandt	Ivan V and Martha S Pieratt	C	1920	Bungalow Craftsman	105	Lt 6
1832	Cortlandt	Wilson R Singleton and Deborah Mueller	PC	1920	2-story Colonial Revival	106	Lt 21
1835	Cortlandt	Jeffrey L and Martha Brailas	PC	1906	Bungalow Craftsman	105	Lt 5
1836	Cortlandt	Mary H Coleman	PC	1920	Bungalow	106	Lts 22 & 23A
1841	Cortlandt	G D Sullivan	PC	1921	Bungalow	105	Lts 3 & 4
1842	Cortlandt	Alec J and Amy J Martinez	C	1910	Folk Victorian	106	Lt 24 & Tr 23

**EXHIBIT B**  
**INVENTORY OF HOUSTON HEIGHTS HISTORIC DISTRICT EAST**  
**HOUSTON, TEXAS**

PROPERTY ADDRESS		OWNER NAME	BLDG STATUS	CIRCA YR BLT	STYLE	BLK	LOT/TRACT*
1845	Cortlandt	James S Sikorski	NC	1994	New Single Family	105	Lt 2
1846	Cortlandt	Theron and Lindsay Norris	C	1920	Bungalow Craftsman	106	Lt 25
1847	Cortlandt	Ashish Mahendru and Sameera Kapasi Mahendru	C	1910	Hipped Bungalow	105	Lt 1
1850	Cortlandt	J A Palavan FAM Ltd Prtshp	PC	1941	Pedimented Bungalow	106	Lt 26
1100	Harvard	Harvard House Condo	PC	1918	Neo-Classical Masonic Lodge	199	Harvard House Condo
1103	Harvard	Wallace Longoria	PC	1925	Bungalow	200	See 117 E 11th St
1115	Harvard	Timothy Rooney	PC	1920	Bungalow Craftsman	200	Lt 10
1117	Harvard	Michael & Linda Irrgang	PC	1920	Foursquare Craftsman	200	Lt 9 & Tr 8
1122	Harvard	Margaret Ann Dewhirst	C	1901	Queen Anne	199	Lt 18 & 1/2 Tr 17
1123	Harvard	Raoul and Deborah LeBlanc	C	1912	Mission Revival	200	Lt 7 & Tr 8A
1125	Harvard	John J Sugg & Teresa May Hayhurst	C	1920	Bungalow	200	Lt 6
1127	Harvard	Dustin A Barton & Diana L. Wesley	NC	1920	Craftsman	200	Lt 5
1128	Harvard	Ian and Melly McCutcheon	NC	2005	New Single Family	199	Lt 19
1132	Harvard	Timothy E Smith	NC	1990	New Single Family	199	Lt 20
1135	Harvard	Warren L Wells	C	1920	Craftsman	200	Lt 4
1136	Harvard	Carolyn J Pechacek	PC	1920	Craftsman	199	Lt 21
1137	Harvard	Daniel E Preston	PC	1920	Bungalow Craftsman	200	Lt 3
1140-42	Harvard	Winston S & Parmita Derden	NC	1960	Duplex	199	Lt 22 & Tr 23A
1141	Harvard	Susan M Rodaitis	C	1917	Bungalow Craftsman	200	Lt 2
1145	Harvard	Curry Buckalew and Isabell Sigala	NC	1997	New Single Family	200	Lt 1
1146	Harvard	Paul R Robertson	C	1930	English Cottage	199	Lt 23 & 24A
1201	Harvard	Condominium	NC	1970	Condominium	187	Harvard Garden Condo
1202	Harvard	Chris J Pappas	PC	1900	Amer Foursquare	188	Trs 13A & 14A
1207	Harvard	Larry Eugene Cano Thorp Nanette R Cano	PC	1920	Bungalow Craftsman	187	Lt 10
1210	Harvard	Bryan and Jennifer L White	C	1900	2-story Queen Anne	188	Lt 15 & 14B
1210	Harvard	Bryan and Jennifer L White	C	1900	Carriage House	188	Lt 15 & 14B
1213	Harvard	Tricia and James Zucker	C	1910	Queen Anne Cottage	187	Lt 9
1214	Harvard	Mark A Price & Leslie Skates	PC	1910	2-story Queen Anne	188	Lt 16
1217	Harvard	Nancy Nalence	NC	1914	Bungalow Craftsman	187	Lt 8
1220	Harvard	Nicholas Etux Noecker Jr	C	1900	Modified L-Plan Queen Anne	188	Lt 17
1221	Harvard	Edwin Sullivan	NC	1920	Bungalow	187	Lt 7
1222	Harvard	Paul P Jardell Jr	C	1910	Modified L-Plan Queen Anne	188	Lt 18
1224	Harvard	John C Lamar	NC	1995	New Single Family	188	Lt 19
1225	Harvard	Robert W Frater & Kelly A Thompson -Frater	C	1908	Modified L-Plan Queen Anne	187	Lt 6

**EXHIBIT B**  
**INVENTORY OF HOUSTON HEIGHTS HISTORIC DISTRICT EAST**  
**HOUSTON, TEXAS**

PROPERTY ADDRESS		OWNER NAME	BLDG STATUS	CIRCA YR BLT	STYLE	BLK	LOT/TRACT*
1227	Harvard	Joseph & Sandra Frusco	NC	1920	Bungalow	187	Lt 5
1230	Harvard	Sarah Rothenberg	NC	1909	Bungalow Craftsman	188	Lt 20
1234	Harvard	Ima Dee Wooton	PC	1912	Queen Anne	188	Lt 21
1235	Harvard	Paul E Nunu	PC	1905	2-story Queen Anne	187	Lts 3 & 4
1238	Harvard	Sherre A Thompson	PC	1914	Bungalow Craftsman	188	Lt 22, Tr 23A
1245	Harvard	Scott and Melinda Guthrie	PC	1907	Queen Anne	187	Lts 1 & 2
1248	Harvard	Kellie D Elder	NC	1999	New Single Family	188	W 76.25ft of Lt 24 & Tr 23B
1300	Harvard	Terrance and Cindy Blankenship	C	1920	Bungalow Craftsman	169	Lt 13
1304	Harvard	Cindy and Terrance Blankenship	PC	1928	Bungalow Craftsman	169	Lt 14
1311	Harvard	Joe Z & Teresa Montgomery	PC	1915	Bungalow Craftsman	170	Lt 10
1312	Harvard	William H Kamps & Susan R Briggs	PC	1910	Gable-front Folk Victorian	169	Lt 15
1314	Harvard	Thomas A Queffelec	PC	1930	Bungalow Craftsman	169	Lt 16
1315	Harvard	Francis L and Helen Matula	PC	1910	Folk Victorian	170	Lt 9
1316	Harvard	Horace G Cullum	PC	1900	Gable-front Cottage	169	Lt 17
1318	Harvard	Steven E Borsos	C	1910	Bungalow Craftsman	169	Lt 18
1319	Harvard	Katherine T Mize	PC	1910	Bungalow Craftsman	170	Lt 8
1321	Harvard	Henry May	PC	1910	Bungalow	170	Lt 7
1322	Harvard	Yu Cha Pak	C	1935	Bungalow	169	Lt 19
1324	Harvard	David & Beatrice K Murrah	NC	1994	New Single Family	169	Lt 20
1327	Harvard	Darryl K & Jean M Shaper	C	1920	Bungalow Craftsman	170	Lt 6
1329	Harvard	Richard Brown and Donna Shivers	C	1910	Hipped Bungalow	170	Lt 5
1335	Harvard	Carl and Cheri Hannerman	C	1915	Craftsman	170	Lt 4
1337	Harvard	Shawna Flynn and Andrew Crispin	NC	1910	Modified L-Plan Queen Anne	170	Lt 3
1340	Harvard	Allen G Pike III	NC	1992	New Single Family	169	Lt 21
1341	Harvard	John Thomas	NC	2004	New Single Family	170	Lt 2
1342	Harvard	Robert Richmond and Alexandra Graham	PC	1915	Gable-front Bungalow	169	Lt 22 & Tr 23A
1346	Harvard	William Ramey	PC	1930	Brick Bungalow	169	Lt 24 & Tr 23
1353	Harvard	Kimberly L and Edwin C Erwin	NC	1920	Bungalow	170	Lt 1
1401-03	Harvard	See 117 E 14th St					
1402	Harvard	Jonathan J and Jeanie G Ross	C	1922	Craftsman; former church	158	Lt 13 & S 25ft of Lt 14
1405	Harvard	Paul Gomberg	PC	1925	Bungalow Duplex	157	Trs 11B & 12B
1409	Harvard	Brian S & Apsari Martin	C	1915	Bungalow	157	Trs 10 & 11A
1412	Harvard	William and Deborah Schroeter	NC	1996	New Single Family	158	N 25ft of Lt 14 & S 45ft of Lt 15
1415	Harvard	Clifford & Valerie Cook	PC	1910	Queen Anne	157	Lt 9
1416	Harvard	Martha L Mackenzie	PC	1922	Craftsman; former church	158	Lt 16 & N 5ft of Lt 15
1419	Harvard	Jeffrey & Meredith Sipes	C	1915	Craftsman	157	Lt 8

**EXHIBIT B**  
**INVENTORY OF HOUSTON HEIGHTS HISTORIC DISTRICT EAST**  
**HOUSTON, TEXAS**

PROPERTY ADDRESS		OWNER NAME	BLDG STATUS	CIRCA YR BLT	STYLE	BLK	LOT/TRACT*
1420	Harvard	Moises R Melchor	C	1915	Bungalow Craftsman	158	Lt 17
1421	Harvard	Belinda J Ambrose	C	1905	Classical Revival	157	Lt 7
1424	Harvard	L S Vargas	PC	1920	Bungalow Craftsman	158	Lt 18
1425	Harvard	Patrick & Lori Lauden	PC	1903	Queen Anne	157	Lt 6
1426	Harvard	Paul & Tammy Murray	NC	1910	Folk Victorian	158	Lt 19
1432	Harvard	Pete and Sharon Santikos	NC	1960	Apartments	158	Lt 20
1433	Harvard	Anne H Sloan	NC	1905	Folk Victorian	157	Lt 5
1436	Harvard	Jeremy and Shelley Daniel	NC	2006	New Single Family	158	Lt 21
1438	Harvard	Helen A Venarske	PC	1930	English Cottage	158	Lt 22
1439	Harvard	Dan Alan & Kyna Batterson	NC	2003	New Single Family	157	Lts 3 & 4
1440	Harvard	Lowell A Bezanis & Maria J Gomez	PC	1909	Modified L-Plan Queen Anne/ Craftsman	158	Lt 23
1445	Harvard	Deborah B Drouin	PC	1903	Dutch Gambrel	157	Lts 1 & 2
1446	Harvard	Lowell A Bezanis & Maria J Gomez	C	1923	Bungalow Craftsman	158	Lt 24
1500	Harvard	Harvard Heights Townhomes	NC	1983	Townhouses	139	Lts 13 & 14
1501	Harvard	James L Hildebrand & Robert B Rogers	NC	1981	New Single Family	140	Lt 12 & Tr 11
1504	Harvard	Bodog Resources	NC	2007	New Single Family	139	Lt 15
1511	Harvard	Jeffrey & Allison Johnston	NC	2002	New Single Family	140	Tr 11A
1513	Harvard	Maria V Graichen	NC	2002	New Single Family	140	Lt 10
1515	Harvard	Erline V Gomez	PC	1920	Renaissance Revival Brick	140	Lt 9
1516	Harvard	Rolf Ackermann	PC	1915	Bungalow Craftsman	139	Lt 16
1517	Harvard	Joseph J Rigano	NC	1966	Single Family Ranch	140	Lt 8
1518	Harvard	Current Owner	PC	1920	Colonial Revival Duplex	139	Lt 17
1521	Harvard	Joseph Conti Family Ltd PS	PC	1920	2-story Craftsman Duplex	140	Lt 7
1523	Harvard	Charles A Almquist	PC	1930	Bungalow Cottage	140	Lt 6
1528	Harvard	Eloise A Weisinger	PC	1930	Bungalow Craftsman	139	Lt 18
1530	Harvard	Kathleen M Schmeler & Stephen N Brown	PC	1920	Bungalow	139	Lt 19
1531	Harvard	Henry C & Emet T Yu	PC	1920	Bungalow Craftsman	140	Lt 5
1532	Harvard	Graeme Mardon & Mary Lawton	PC	1920	Bungalow Craftsman	139	Lt 20
1533	Harvard	Alice Abdo	PC	1925	Bungalow	140	Lt 4
1534	Harvard	Julio Gonzalez	C	1913	Modified L-Plan Queen Anne	139	Lt 21
1536	Harvard	Barbara Bohac Fowler	C	1920	Bungalow Craftsman	139	Lt 22 & Tr 23
1548	Harvard	Steve Sievert and John Burt	PC	1930	Bungalow Craftsman Brick	139	Trs 23A & 24
1602	Harvard	Donald L and Sarah Hunt	C	1898	Queen Anne	116	Lt 14 & Tr 15A
1606	Harvard	Lorenza Rodriguez	PC	1935	English Cottage	116	Trs 15 & 16
1608	Harvard	Lindsay Long	PC	1925	Bungalow Craftsman	116	Trs 16A & 17A
1610	Harvard	Ralph J Herring	NC	1997	New Single Family	116	Tr 17

**EXHIBIT B**  
**INVENTORY OF HOUSTON HEIGHTS HISTORIC DISTRICT EAST**  
**HOUSTON, TEXAS**

PROPERTY ADDRESS		OWNER NAME	BLDG STATUS	CIRCA YR BLT	STYLE	BLK	LOT/TRACT*
1611	Harvard	Margaret Kay Scoggin	C	1925	Bungalow Craftsman	117	Lt 11
1615	Harvard	Michael Stencil	PC	1925	Pedimented Bungalow	117	Lt 10
1617	Harvard	Bart J Truxillo	PC	1920	Bungalow Craftsman	117	Lt 9
1620	Harvard	Marc L & Karen M Davidson	PC	1925	Bungalow Craftsman	116	Lt 18
1623	Harvard	Lamar Mathews	PC	1915	Hipped Bungalow	117	Lt 8
1625	Harvard	Steven Cowart	PC	1920	Bungalow Craftsman	117	Lt 7
1626	Harvard	Jack C & Sandra H McCabe	PC	1919	Bungalow Craftsman	116	Lt 19
1628	Harvard	Heights Holdings Inc.	C	1925	Craftsman	116	Lt 20
1629	Harvard	Harvey James Rath Sr	PC	1910	Folk Victorian	117	Lt 6
1630	Harvard	Patricia & Michael Journey	NC	2003	New Single Family	116	Lt 21
1631	Harvard	Casper Vanek	C	1920	Bungalow Craftsman	117	Lt 5
1633	Harvard	Ronald & Jessica Smith	PC	1920	Pedimented Bungalow	117	Lt 4
1634	Harvard	Dorothy & Paul Kmiec	PC	1930	Bungalow Craftsman	116	Lt 22
1635	Harvard	David Lee Denson Jr	C	1920	Bungalow Craftsman	117	Lt 3
1638	Harvard	Viola E Sostak	PC	1920	Bungalow Craftsman	116	Lt 23
1640	Harvard	Larry J & Ann S McGinty	NC	1902	Modified L-Plan Queen Anne	116	Lt 24
1646	Harvard	Christopher J Curran & Lauri Lindsey	NC	1905	National Folk Pyramidal	116	Lt 25
1648	Harvard	William & Amydell Beardshall	NC	1991	New Single Family	116	Lt 26
1701	Harvard	David W Minear & William G Scott	NC	1960	Apartments	117	Lts 1 & 2
1802	Harvard	Bart Truxillo	C	1893	Queen Anne	105	Lts 14 & 15
1802	Harvard	Bart Truxillo	C	1893	Carriage House	105	Lts 14 & 15
1803	Harvard	Richard C Hill	PC	1922	Garage Apartment	104	See 121 E 18th
1805	Harvard	Lala M Messerly	PC	1920	Bungalow	104	Lts 11 & 12 A
1806	Harvard	Bart J Truxillo	V	Lot	Lot	105	Lt 16
1807	Harvard	Wilbert W and Delores Muenster	PC	1920	Bungalow Craftsman	104	Lt 10 & Tr 11A
1808	Harvard	Jesus Silva	PC	1920	Bungalow Craftsman	105	Lt 17
1809	Harvard	Alfredo Cervantes	C	1920	Bungalow	104	Lt 9
1811	Harvard	Calvin C Simper	C	1920	Pedimented Bungalow	104	Lt 8
1812	Harvard	Arthur E Espinosa	NC	1993	New Single Family	105	Lt 18
1816	Harvard	Kenneth E & Belinda Crimmins	NC	1993	New Single Family	105	Lt 19
1820	Harvard	Sam Davis	PC	1920	Bungalow Craftsman	105	Lt 20
1821	Harvard	Edward & Melody Gillett	PC	1905	2-story Queen Anne	104	Lt 7
1825	Harvard	Edward & Melody Gillett	V	Lot	Lot	104	Lt 6
1827	Harvard	Edward & Melody Gillett	PC	1920	Bungalow	104	Lt 5
1832	Harvard	Edward & Melody Gillett	C	1926	Bungalow Craftsman	105	Lt 21
1838	Harvard	Edward & Melody Gillett	PC	1920	Bungalow Craftsman	105	Lt 22

**EXHIBIT B**  
**INVENTORY OF HOUSTON HEIGHTS HISTORIC DISTRICT EAST**  
**HOUSTON, TEXAS**

PROPERTY ADDRESS		OWNER NAME	BLDG STATUS	CIRCA YR BLT	STYLE	BLK	LOT/TRACT*
1840	Harvard	Ronald Sandroek	PC	1920	Bungalow Craftsman	105	Lt 23
1844	Harvard	1844 Harvard St LLP	NC	1920	Bungalow Remodeled	105	Lt 24
1845	Harvard	Paul Frank Pernoud	C	1914	Mediterranean Revival	104	Lts 3 & 4
1846	Harvard	Houston Heights Womans Club	C	1912	Meeting Hall/ Craftsman	105	Lt 25
1847	Harvard	Doris J Deblanc	PC	1930	Craftsman	104	Lt 2
1849	Harvard	Jarrell D & Jennifer H Bates	C	1915	Bungalow Craftsman	104	Lt 1
1101	Heights Blvd	National City Mortgage Inc.	C	1910	Queen Anne	201	11 & 12 Heights Court
1101	Heights Blvd	Latif and Company	NC	1960	2-story Garage Apt	201	10 Heights Court
1102	Heights Blvd	Alan Bies	C	1893	Queen Anne	200	Lts 13, 14, 15, & 16
1102	Heights Blvd	Alan Bies	C	1893	Carriage House	200	Lts 13, 14, 15, & 16
1111	Heights Blvd	David Schien	C	1905	Queen Anne	201	Lt 9 & Tr 10A
1117	Heights Blvd	Mary Cassaro	C	1918	Amer Foursquare	201	Lt 8 & Tr 7
1118	Heights Blvd	Phillip D and Tye P Taft	PC	1930	Brick Bungalow	200	Lt 17
1121	Heights Blvd	Evelyn Worthington	NC	2007	New Single Family	201	Lt 5, Trs 6, 6A & 7A
1122	Heights Blvd	David & Lisa Ross	PC	1920	Craftsman	200	Lt 18
1128	Heights Blvd	Steve Quellette	C	1925	Bungalow & Garage Apt	200	Lt 19
1132	Heights Blvd	Steve Quellette	PC	1940	2-story Brick Broadfront	200	Lt 20
1136	Heights Blvd	Benjamin and Allison Woodford	PC	1940	Cottage	200	Lt 21, Tr 22
1139	Heights Blvd	Joseph Conti Family LTD	NC	1981	Single Family	201	Lt 4
1141	Heights Blvd	Joseph Conti Family LTD	C	1925	Bungalow Craftsman	201	Tr 3
1143	Heights Blvd	Joseph Conti Family LTD	C	1925	Bungalow Craftsman	201	Trs 2, 3A
1144	Heights Blvd	Mary Diaz	PC	1930	Bungalow	200	Lt 23, Tr 22A
1145	Heights Blvd	William Scott and David Minear	NC	1960	Apartments	201	Lt 1, Tr 2A
1148	Heights Blvd	Joellen Snow	C	1924	Bungalow Craftsman	200	Lt 24
1201	Heights Blvd	Lewis Strauss	C	1934	Brick Bungalow Duplex	186	Lt 12, Tr 31
1202	Heights Blvd	Bart Truxillo	C	1920	Craftsman Duplex	187	Lt 13
1203	Heights Blvd	Tracy Conwell	C	1910	Hipped Bungalow Craftsman	186	Lt 11, Tr 30
1204	Heights Blvd	Greg Gless	PC	1920	Bungalow Craftsman	187	Lt 14
1210	Heights Blvd	RKM Heins Properties LLC	C	1930	Apartments Art Deco	187	Lt 15
1214	Heights Blvd	Dana Chris and Melanie N Thornton	C	1905	Queen Anne	187	Lt 16
1215	Heights Blvd	Diane and Francis Haas	NC	1958	Brick Ranch	186	Lts 9, 10, Tr 20
1217	Heights Blvd	Strohecker Interests	NC	1952	Apartments	186	Lt 8, Tr 28

**EXHIBIT B**  
**INVENTORY OF HOUSTON HEIGHTS HISTORIC DISTRICT EAST**  
**HOUSTON, TEXAS**

PROPERTY ADDRESS		OWNER NAME	BLDG STATUS	CIRCA YR BLT	STYLE	BLK	LOT/TRACT*
1218	Heights Blvd	John Palmer	C	1920	Bungalow Craftsman	187	Lt 17
1222	Heights Blvd	Sergio Seche	NC	1964	Apartments	187	Lt 18
1225	Heights Blvd	William Coulter	C	1920	Foursquare Craftsman	186	Lt 7, Tr 27
1226	Heights Blvd	Jeanette and Daniel G Brumbaugh	NC	1946	Single Family	187	Lt 19
1227	Heights Blvd	Strohecker Interests LTD Ptnship	PC	1912	Bungalow Craftsman	186	Lt 6, Tr 26
1229	Heights Blvd	Joyce Wolter	PC	1898	Colonial Revival	186	Lt 5, Trs 4, 25
1230	Heights Blvd	Jeanette and Daniel G Brumbaugh	PC	1920	Craftsman	187	Lt 20
1231	Heights Blvd	Joyce Wolter	NC		Garage Apartment	186	Lt 5, Trs 4, 25
1240	Heights Blvd	Maria T Leal	PC	1920	Bungalow Craftsman	187	Lt 21
1242	Heights Blvd	Simon A & Stacy L Rushton	C	1925	Bungalow Craftsman	187	Lt 22
1244	Heights Blvd	Houston Zen Community	PC	1920	Bungalow Craftsman	187	Lt 23
1245	Heights Blvd	Grace Methodist Church	C	1971	Neo-Gothic Church	186	See 1240 Yale
1248	Heights Blvd	Grace Methodist Church	NC	1955	Single Family Ranch	187	Lt 24
1310	Heights Blvd	City of Houston	C	1925	Renaissance Revival	170	Lts 13-17, Tr 18A
1317	Heights Blvd	Heights Funeral Home	NC	1960	Commercial	171	Lts 7-10, Tr 6
1318	Heights Blvd	1314 Heights Blvd Ltd	NC	1960	Apartments	170	Lts 19, 20, Trs 18, 21
1323	Heights Blvd	Heights Funeral Home	V	Lot	Lot	171	Lt 5, Tr 6A
1330	Heights Blvd	Stephen Tanner and Terri Garth	C	1920	Foursquare Craftsman	170	Lt 22, Tr 21A
1333	Heights Blvd	Rebecca Martinez	C	1920	Amer Foursquare	171	Lt 4
1341	Heights Blvd	1341 Heights Blvd. LLP	NC	2007	Brick Townhouse	171	5 The Boulevard Subdivision
1343	Heights Blvd	1341 Heights Blvd. LLP	NC	2007	Brick Townhouse	171	4 The Boulevard Subdivision
1345	Heights Blvd	1341 Heights Blvd. LLP	NC	2007	Brick Townhouse	171	3 The Boulevard Subdivision
1347	Heights Blvd	1341 Heights Blvd. LLP	NC	2007	Brick Townhouse	171	2 The Boulevard Subdivision
1349	Heights Blvd	1341 Heights Blvd. LLP	NC	2007	Brick Townhouse	171	1 The Boulevard Subdivision
1346	Heights Blvd	Sara C Dinyari	V	Lot	Lot	170	Lt 23
1348	Heights Blvd	Raymond E & Jackie Wray	C	1910	Colonial Revival	170	Lt 24
1401	Heights Blvd	Tran Win Corp.	NC	1960	Commercial	156	Lts 11, 12
1402	Heights Blvd	Steven Ray & Mitzi Shields	PC	1920	Craftsman	157	Lt 13
1406	Heights Blvd	Lisa Jones	NC	2006	New Single Family	157	Lt 14
1407	Heights Blvd	Randle Pace	C	1921	Craftsman	156	Lt 10
1410	Heights Blvd	Gerardo J Garcia	PC	1925	Craftsman	157	Lt 15

**EXHIBIT B**  
**INVENTORY OF HOUSTON HEIGHTS HISTORIC DISTRICT EAST**  
**HOUSTON, TEXAS**

PROPERTY ADDRESS		OWNER NAME	BLDG STATUS	CIRCA YR BLT	STYLE	BLK	LOT/TRACT*
1411	Heights Blvd	Gallagher Lara Langford	C	1941	Colonial Cottage Brick	156	Lt 9
1414	Heights Blvd	Jerry S Baiamonte	C	1943	Cottage	157	Lt 16
1417	Heights Blvd	George and Patricia Lehman	PC	1920	Bungalow	156	Lt 8
1418	Heights Blvd	Jay & Kerry G Harpole	C	1918	Craftsman/ Prairie School	157	Lt 17
1421	Heights Blvd	Esther Flores and Donald Cathey	C	1910	Colonial Revival	156	Lt 7
1422	Heights Blvd	Jerry S Baiamonte	PC	1940	Cottage	157	Lt 18
1425	Heights Blvd	Miquel Antonio Mendez & Carol Clayton Gardner	PC	1925	Bungalow Craftsman	156	Lt 6
1428	Heights Blvd	Edgar N Baquero	PC	1937	English Cottage	157	Lt 19
1433	Heights Blvd	Virginia and Baldomero Garza	NC	1935	Single Family	156	Lt 5
1435	Heights Blvd	David Vandiver	C	1903	Queen Anne	156	Lt 4
1436	Heights Blvd	Delores Caldwell	NC	2006	New Single Family	157	Lt 20
1437	Heights Blvd	Matthew Bedingfield	C	1903	Queen Anne	156	Lt 3
1440	Heights Blvd	Kristie Marie Widner and Mary Widner	C	1920	Bungalow Craftsman	157	Lt 21
1444	Heights Blvd	Virgil and Pamela Weisinger	PC	1920	Bungalow Craftsman	157	Lt 22
1447	Heights Blvd	Heights Venture LLC	NC	1960	Condominium	156	Lts 1, 2
1448	Heights Blvd	Amy Ruf and Theodore Apotria	C	1914	Craftsman/Prairie School	157	Lts 23, 24
1502	Heights Blvd	William and Stevelyn McBay	NC	1960	Apartments	140	Lts 13, 14
1505	Heights Blvd	Swilley Hudson Assoc. Inc.	PC	1905	Queen Anne	141	Lts 11, 12
1510	Heights Blvd	Scott G and Amy Stevens	C	1920	Bungalow Craftsman	140	Lt 15
1512	Heights Blvd	Allison H. Jones	PC	1930	2-story Gable-front Brick	140	Lt 16
1515	Heights Blvd	Michael August and Monica Silber	C	1910	Queen Anne	141	Lt 10
1517	Heights Blvd	Brantley Healy Living Trust	PC	1920	Amer Foursquare	141	Lt 9
1523	Heights Blvd	1523 Heights Blvd LTD	NC	1965	Apartments	141	Lts 7, 8, Tr 6A
1525-27	Heights Blvd	Houston Lodge Theosophical Society of America	PC	1930	Bungalow Craftsman Duplex	141	Tr 6
1526	Heights Blvd	Allison H Jones	PC	1920	Bungalow	140	Lt 17
1529	Heights Blvd	Beatrice and Jesse Fowler	C	1930	Bungalow Craftsman Duplex	141	Lt 5
1530	Heights Blvd	1530 Heights Blvd Ltd	NC	1960	Apartments	140	Lts 18, 19 & 20
1533	Heights Blvd	Heights Capital LLC	PC	1925	Bungalow	141	Lt 4
1536	Heights Blvd	Dwayne O Fuller	C	1920	Craftsman Prairie School	140	Lts 21, 22, Trs 3, 4A
1539	Heights Blvd	Susanna Loh	NC	2004	New Single Family	141	Lt 3, S 1/2 of Lt 2
1545	Heights Blvd	Robert Derr	NC	2003	Commercial	141	Lt 1, N 1/2 of Lt 2

**EXHIBIT B**  
**INVENTORY OF HOUSTON HEIGHTS HISTORIC DISTRICT EAST**  
**HOUSTON, TEXAS**

PROPERTY ADDRESS		OWNER NAME	BLDG STATUS	CIRCA YR BLT	STYLE	BLK	LOT/TRACT*
1548	Heights Blvd	Heights Church of Christ	C	1924	Neo-Classical Church	140	Lts 1, 2, 23, 24, Tr 3A
1603	Heights Blvd	Heights Blvd Condo	NC	1993	Condominium	133	Heights Blvd Condo
1605	Heights Blvd	Geoffrey and Karlene Poll	C	1918	Renaissance Revival	133	Lt 4, Trs 3A, 5, 6
1605	Heights Blvd	Geoffrey and Karlene Poll	C	1918	Carriage House	133	Lt 4, Trs 3A, 5, 6
1606	Heights Blvd	Reagan Lodge #1037 AF & AM	PC	1948	Meeting Hall/ Classical Revival	117	Lts 14 & 15
1612	Heights Blvd	Camilla Gill	PC	1921	2-story Craftsman	117	Lts 16 & 17
1621	Heights Blvd	17th Street Condo	NC	2000	Condominium	133	17th Street Condo
1624	Heights Blvd	George Lehman III & Patricia Lehman	C	1921	Foursquare Craftsman	117	Lt 18, Tr 17A
1626	Heights Blvd	Bruce Kendall Smith	PC	1940	Cottage	117	Lt 19
1630	Heights Blvd	Dr Brian Hawkins	NC	1989	New Single Family	117	Lts 20 & 21
1703	Heights Blvd	Heights Christian Church	C	1927	Neo-Classical Church	118	Lts 1-7
1702	Heights Blvd	Peter Francis Coleman & Katherine Minor	NC	1996	New Single Family	117	Lt 22
1704	Heights Blvd	Gail M Cheramie & Ginger Gates	NC	1996	New Single Family	117	Lt 23
1712	Heights Blvd	Robert S & Kay H Pieringer	NC	1998	New Single Family	117	Lt 24, S 20ft of Lt 25
1722	Heights Blvd	Guss D Opperman and Charles Wheat	NC	2000	New Single Family	117	Lt 26, Tr 25B
1745	Heights Blvd	Heights Christian Church	C	1965	Neo-Gothic Church	118	Lts 1-7
0	Heights Blvd	DLP Real Estate Acquis Co	V	Lot	Lot	117	Tr 25A
1800	Heights Blvd	Houston Heights Assoc. (Marmion Park)	C	1986	Landscape Gazebo	104	Lts 14, 15 & 16
1801	Heights Blvd	GK Re 1801 Heights LTD	C	1910	Classical/Prairie/ Craftsman	103	Lts 6 & 7
1811	Heights Blvd	St. Andrews Episcopal Church	PC	1910	Amer Foursquare	103	Lt 5, Tr 4
1819	Heights Blvd	Church Epis Protstnt St (St Andrews)	C	1947	Gothic Revival Church	103	Lts 1, 2, 3 Tr 4A
1820	Heights Blvd	Joseph A and Mihwa Slonaker	NC	1950	Ranch	104	Lts 17 & 18
1824	Heights Blvd	Donald W & Helen Jackson	PC	1889	Queen Anne	104	Lts 19 & 20
1906	Heights Blvd	Estate of James W Love	C	1925	Craftsman	104	Lt 21
1100 Blk	Heights Blvd	City of Houston Dept of Parks and Recreation	C	1891	Esplanade		Esplanade
1200 Blk	Heights Blvd	City of Houston Dept of Parks and Recreation	C	1891	Esplanade		Esplanade
1300 Blk	Heights Blvd	City of Houston Dept of Parks and Recreation	C	1891	Esplanade		Esplanade
1400 Blk	Heights Blvd	City of Houston Dept of Parks and Recreation	C	1891	Esplanade		Esplanade
1500 Blk	Heights Blvd	City of Houston Dept of Parks and Recreation	C	1891	Esplanade		Esplanade
1600 Blk	Heights Blvd	City of Houston Dept of Parks and Recreation	C	1891	Esplanade		Esplanade
1700 Blk	Heights Blvd	City of Houston Dept of Parks and Recreation	C	1891	Esplanade		Esplanade

**EXHIBIT B**  
**INVENTORY OF HOUSTON HEIGHTS HISTORIC DISTRICT EAST**  
**HOUSTON, TEXAS**

PROPERTY ADDRESS		OWNER NAME	BLDG STATUS	CIRCA YR BLT	STYLE	BLK	LOT/TRACT*
1800 Blk	Heights Blvd	City of Houston Dept of Parks and Recreation	C	1891	Esplanade		Esplanade
1900 Blk	Heights Blvd	City of Houston Dept of Parks and Recreation	C	1891	Esplanade		Esplanade
1109	Oxford	Daniel and Kathy Newman	NC	2007	New Single Family	196	Lt 10
1115	Oxford	Juan and Hilda Delgado	PC	1920	Pedimented Bungalow	196	Lt 9
1119	Oxford	Tammy and Dohsung Yum	PC	1905	2-story I-house	196	Lt 8
1123	Oxford	Edward Zarosky	PC	1905	Queen Anne Cottage	196	Lt 7
1127	Oxford	Peter Simmons & Kathleen Desilva	PC	1905	Hipped Bungalow	196	Lt 6
1129 B	Oxford	Andrew Cain and Gail Pender	NC	2002	New Single Family	196	1 Oxford Street
1129 A	Oxford	Robert P Bergeron	NC	2001	New Single Family	196	2 Oxford Street
1131	Oxford	Steven Garcia	C	1915	Bungalow Craftsman	196	Lt 4
1135	Oxford	Michael Head and Alice Bohlea	C	1890	Cottage	196	Lt 3
1145	Oxford	Eric Glasgow	PC	1910	Pyramid-roof Cottage	196	Lt 2
1147	Oxford	Bernardino and Maria Alderete	PC	1915	Folk Victorian	196	Lt 1
1209	Oxford	Patricia Dumas	PC	1920	Bungalow Craftsman	191	Lt 10
1213	Oxford	Stephen Leslie	PC	1920	Bungalow Craftsman	191	Lt 9
1217	Oxford	Stephen Leslie	NC	1900	L-plan Cottage	191	Lt 8
1219	Oxford	Stephen Leslie	PC	1920	Bungalow Craftsman	191	Lt 7
1225	Oxford	David McMillian	PC	1905	Folk Victorian	191	Lt 6
1229	Oxford	Elizabeth Milliken and Sean DeVaney	PC	1935	Brick bungalow	191	Lt 5
1231	Oxford	Tom Babineck	NC	1965	Apartments	191	Lt 4
1235	Oxford	Anthony Walter	NC	1910	Altered	191	Lt 3
1237	Oxford	Paul Luccia	NC	1920	Altered	191	Lt 2
1247	Oxford	Prestige Real Estate Inc.	PC	1910	Queen Anne	191	Lt 1
1401	Oxford	Patricia Ann Larason	PC	1900	2-story Queen Anne	161	Lt 12
1407	Oxford	Jeffrey Fleisher and Elizabeth Vann	C	1915	Bungalow Craftsman	161	Lt 11
1411	Oxford	Constance Adams	C	1915	Bungalow Craftsman	161	Lt 10
1415	Oxford	Edward Fink	PC	1920	Bungalow	161	Lt 9
1417	Oxford	Mario and Alicia Marquez	PC	1925	Bungalow Craftsman	161	Lt 8
1419	Oxford	John W Finta and Sally Totenbeir	NC	1992	New Single Family	161	Lt 7
1421	Oxford	Margie Beth Seaman	NC	1993	New Single Family	161	Lt 6
1423	Oxford	Belinda Partida	PC	1920	Bungalow	161	Lt 5
1433	Oxford	Ricardo Castillo and Jessica Terry	PC	1915	Bungalow	161	Lt 4
1437	Oxford	Kristen Dockter	NC	1910	Gothic Revival Remodeled	161	Lt 3
1443	Oxford	Michael Muskat	NC	1996	New Single Family	161	Lt 2
1447	Oxford	Keith F Buck	C	1915	Bungalow	161	Lt 1
1501	Oxford	Carole Minor	PC	1920	Hipped Bungalow	136	12

**EXHIBIT B**  
**INVENTORY OF HOUSTON HEIGHTS HISTORIC DISTRICT EAST**  
**HOUSTON, TEXAS**

PROPERTY ADDRESS		OWNER NAME	BLDG STATUS	CIRCA YR BLT	STYLE	BLK	LOT/TRACT*
1505	Oxford	Jennifer Hoff	C	1915	Bungalow Craftsman	136	Lt 11
1509	Oxford	Mark and Rebecca Standridge	NC	1993	New Single Family	136	Lt 10 & Tr 9, 8, 9A
1519	Oxford	Mark Standridge and Rebecca Davis	C	1920	Bungalow Craftsman	136	Trs 7 & 8 A
1523	Oxford	Knight Construction	NC	2007	New Single Family	136	Trs 6 & 7 A
1525	Oxford	1525 Oxford LP	NC	2007	New Single Family	136	Lt 5 & Tr 6A
1527	Oxford	1525 Oxford LP	NC	2007	New Single Family	136	Lt 5 & Tr 6A
1531	Oxford	William Eiland	C	1900	Queen Anne Cottage	136	Lt 4
1535	Oxford	Charles Madeley and Lee Raymond	NC	1935	Altered	136	Lt 3
1543	Oxford	Charles Bartakovitz	C	1915	Bungalow	136	Lt 2
1545	Oxford	Juliet H Hicks and Michael R McFarland Jr.	PC	1920	Bungalow Craftsman	136	Lt 1
1605	Oxford	Donald Sexton	PC	1930	Bungalow Craftsman	113	Lt 12
1613	Oxford	L K Hughes M Trust	PC	1925	Bungalow Craftsman	113	Lt 11
1615	Oxford	James Boyd	PC	1910	Modified Queen Anne	113	Lt 10
1617	Oxford	Diane Trandell	C	1915	Bungalow	113	Lt 9
1625 Unit A	Oxford	Gretchen Gay	NC	1983	Attached Townhouse	113	Tr 8A
1625 Unit B	Oxford	Landon B Odle	NC	1983	Attached Townhouse	113	Tr 8B
1627 Unit A	Oxford	Keith Norman	NC	1983	Attached Townhouse	113	Tr 7A
1627 Unit B	Oxford	Donna and Charles Parks	NC	1983	Attached Townhouse	113	Tr 7B
1629	Oxford	Jennifer and Jeff Copeland	PC	1925	Bungalow Craftsman	113	Lt 6
1631	Oxford	Deborah Wright	PC	1920	Bungalow	113	Lt 5
1703	Oxford	Mei Wu and John Winkler	NC	2000	New Single Family	113	Lt 4
1711	Oxford	Elaine Harris	PC	1925	Bungalow	113	Lt 3
1715	Oxford	Elaine Harris	PC	1925	Bungalow	113	Lt 2
1719	Oxford	Marion Fitzpatrick	PC	1930	Bungalow Duplex	113	Tr 1
1721	Oxford	John Payne	PC	1930	Bungalow Duplex	113	Tr 1A
1801	Oxford	Angelo and Rosa Navarro	NC	1960	Ranch	108	Lt 13
1807	Oxford	Vincent and Regina Ibarra	NC	1994	New Single Family	108	Lt 12
1811	Oxford	Landon Storrs and Richard Priest	PC	1900	Folk Victorian	108	Lt 11
1817	Oxford	Landon Storrs and Richard Priest	PC	1920	Bungalow Craftsman	108	Lt 10
1819	Oxford	Theodore and Winifred Pfister	PC	1915	2-story Craftsman	108	Lt 9
1823	Oxford	Suzanne and Steven Alex	C	1900	Pyramid-roof Cottage	108	Lt 8
1825	Oxford	Suzanne and Steven Alex	NC	1980	New Single Family	108	Lt 7
1903	Oxford	Margaret Bradley	PC	1925	Gable-front Bungalow	108	Lt 6
1909	Oxford	Margaret Bradley	PC	1905	Hipped Bungalow	108	Lt 5
1915	Oxford	Georgie Lee Dewberry	PC	1920	Bungalow	108	Lt 4
1921	Oxford	Edward Patrick Cooney	NC	1970	Industrial	108	Lt 3

**EXHIBIT B**  
**INVENTORY OF HOUSTON HEIGHTS HISTORIC DISTRICT EAST**  
**HOUSTON, TEXAS**

PROPERTY ADDRESS		OWNER NAME	BLDG STATUS	CIRCA YR BLT	STYLE	BLK	LOT/TRACT*
1216	Yale	Godoy Jorge Verduzco	PC	1920	Commercial Broadfront	186	Lt 16 Tr 32
1214	Yale	Bankhead Gary & Laura Morris	C	1915	Craftsman Duplex	186	LT 17 Tr 33
1222	Yale	Grace United Methodist Church	V	Lot	Parking Lot	186	Lt 18 Tr 34
1226	Yale	Grace United Methodist Church	V	Lot	Parking Lot	186	Lt 19 Tr 35
1240	Yale	Grace United Methodist Church	C	1951	Gothic Revival Ed Bldg	186	Lts 1,2,3, 20-24, Trs 4A, 37
1240	Yale	Grace United Methodist Church	PC	1926	2-Story Craftsman Brick Church Hall	186	Lts 1,2,3, 20-24, Trs 4A, 37
117	E 11th St	Wallace Longoria	PC	1925	Gas Station	200	Lts 11 & 12
147	E 11th St	Wallace Longoria	NC	1984	Commercial	200	Lts 11 & 12
215	E 11th St	Joseph Conti Family LTD PS	PC	1930	Commercial	199	Lts 11 & 12
301	E 11th St	Gustav and Sharon Kopriva	PC	1934	Commercial	198	Lts 13 & 14
509	E 11th St	Richard Chafey and ETAL	PC	1905	Queen Anne Cottage	196	Trs 13A & 14B
513	E 11th St	Kristin McDade	NC	2001	Townhouse	196	4 Karina Heights
515	E 11th St	Andrew and Stephanie Swartz	NC	2001	Townhouse	196	3 Karina Heights
517	E 11th St	Renee Remillard	NC	2001	Townhouse	196	2 Karina Heights
519	E 11th St	Jeanette and Atenvidmar and Dennis Vidmar	NC	2001	Townhouse	196	1 Karina Heights
107	E 12th St	Bart Truxillo	C	1930	Garage Apartment	187	See 1202 Heights Blvd
109	E 12th St	David W and Diana G Roark	C	1920	Bungalow Craftsman	187	Trs 13A & 14B
112	E 12th St	Curry Buckalew and Isabell Sigala	NC	1997	Garage Apartment	200	See 1145 Harvard
121	E 12th St	Harvard Garden Condo	NC	1970	Condominium	187	Harvard Garden Condo
206	E 12th St	See 1146 Harvard					
208	E 12th St	Jeffrey R Rust	PC	1900	Gable-front Cottage	199	Trs 24, 23B, 23 A-1
217	E 12th St	Gary Lynn Hollingsworth	NC	1950	Apartments	188	Trs 13 & 14
221	E 12th St	M D and Beth Beck	C	1900	Bungalow Craftsman	188	Trs 11 & 12
222	E 12th St	Kenneth S and Anne O CuLotta	PC	1920	Modified L-Plan	199	Trs 1A & 2A
223	E 12th St	John F and Yvonne R cosgrove	C	1920	Bungalow Craftsman	188	Trs 11A & 12A
224	E 12th St	Elizabeth A Dennis	PC	1920	Amer Foursquare	199	Trs 1 & 2
306	E 12th St	Jo Ann Roberts	PC	1925	Bungalow Craftsman	198	Tr 24
311	E 12th St	Margaret Lee	PC	1930	English Cottage	189	Trs 13A & 14A
315	E 12th St	Edward Rossi	C	1930	Brick Bungalow	189	See 1201 Arlington
415	E 12th St	Jennifer Frost	PC	1920	Bungalow Craftsman	189	Trs 11A & 12A
501	E 12th St	Current Owner	NC	1920	Modified L-Plan Queen Anne	191	Lt 13 & Tr 14A
502	E 12th St	John B and Sue Schwallier	NC	1920	Bungalow	196	Trs 23A & 24
503	E 12th St	Charles L Cunningham Jr.	NC	2004	Commercial	191	Tr 14
504	E 12th St	Matthew and Julie Hershberger	PC	1930	Bungalow Craftsman	196	Trs 23 & 24A
517	E 12th St	Jade Youck	NC	2006	New Single Family	191	Trs 11A & 12A

**EXHIBIT B**  
**INVENTORY OF HOUSTON HEIGHTS HISTORIC DISTRICT EAST**  
**HOUSTON, TEXAS**

PROPERTY ADDRESS		OWNER NAME	BLDG STATUS	CIRCA YR BLT	STYLE	BLK	LOT/TRACT*
521	E 12th St	Sandra Acosta	PC	1897	Queen Anne Cottage Raised	191	Trs 11 & 12
120	E 13th St	Steven C Daniell	NC	1985	Townhouse	187	Trs 1A-1 & 2A-1
122	E 13th St	Melvin B Ocker Jr.	NC	1985	Townhouse	187	Trs 1B & 2B
124	E 13th St	Eugene L and Lynda S Johnson	NC	1985	Townhouse	187	Trs 1A & 2A
120	E 13th St	13th St Victorians Civic Improvement Assoc.	V	N/a	Common Open Space	187	Tr 2A-2
123	E 13th St	Gary L and Carpio Wilson	NC	1984	Townhouse	170	Tr A
125	E 13th St	Candace A Reuss	NC	1984	Townhouse	170	Tr B
127	E 13th St	Kwok Wai Leung	NC	1984	Townhouse	170	Tr C
128	E 13th St	See 1245 Harvard				170	
129	E 13th St	Julye G Newlin	NC	1984	Townhouse	170	Tr D
203	E 13th St	Terrance and Cindy Blankenship	PC	1920	Garage Apartment	169	See 1300 Harvard
210	E 13th St	Linda D and Barry E Hluchan	NC	2000	New Single Family	188	E 55.75ft of Lt 24
309	E 13th St	Anne and Edwin Schuller	PC	1920	Foursquare Craftsman	168	Trs 13 & 14
314	E 13th St	Jean C G Roberts	NC	1984	Commercial	189	Trs 1A & 2A
414	E 13th St	Benefiel Family Trust	PC	1915	Bungalow Craftsman	190	See 1247 Columbia
512	E 13th St	Lillian M Flurry	PC	1920	Bungalow Craftsman	191	Lt 23 & 24A
516	E 13th St	Prestige Real Estate Inc.	PC	1940	Garage Apartment	191	See 1247 Oxford
105	E 14th St	Steven Ray & Mitzi Shields	PC	1920	Amer Foursquare	157	See 1402 Heights Blvd
106	E 14th St	Raymond E & Jackie Wray	NC	2000	Garage Apartment	170	See 1348 Heights Blvd
115	E 14th St	David G Burnet Museum Inc.	PC	1928	Odd Fellows Hall	157	Lt 11 & Tr 12A
116	E 14th St	James T Thorne	PC	1925	Bungalow Craftsman	170	Tr 1B
117	E 14th St	Forrest Paddock	PC	1925	Craftsman fourplex	157	Lt 12
118	E 14th St	Heather Korb	PC	1925	Bungalow Craftsman	170	Tr 1A
207	E 14th St	See 1402 Harvard					
212-216	E 14th St	Dennis L Powell Shelton Michael	NC	1935	Fourplex	169	See 1341 Cortlandt
301	E 14th St	Anne R Hernandez	C	1906	Modified L-Plan Queen Anne	159	W 72 Ft of Lts 13 & 14
310-312	E 14th St	Wayne Harvell and Mary Robinson Sr.	PC	1920	Duplex	168	Lt 24
409	E 14th St	Diane G Edmondson and Larry Gray	NC	1915	Bungalow Craftsman	159	Trs 13A & 14A
415	E 14th St	Robert C and Jennifer Layton	PC	1910	Queen Anne	160	Trs 11A & 12A
417	E 14th St	Charlie F Rivenbark and Rodney Vamosi	C	1910	Craftsman Cottage	160	Trs 11 & 12
511	E 14th St	Profrorio and Honora Diaz	PC	1930	Bungalow	161	Trs 13A & 14A
223	E 15th St	See 1501 Cortlandt					
301	E 15th St	Corum Properties LTD	PC	1905	Modified L-Plan Queen Anne	138	Trs 13 & 14
305	E 15th St	Chrystal L and Philip Wursteisen	NC	1920	Bungalow	138	Trs 13A & 14A
306	E 15th St	See 1448 Cortlandt					

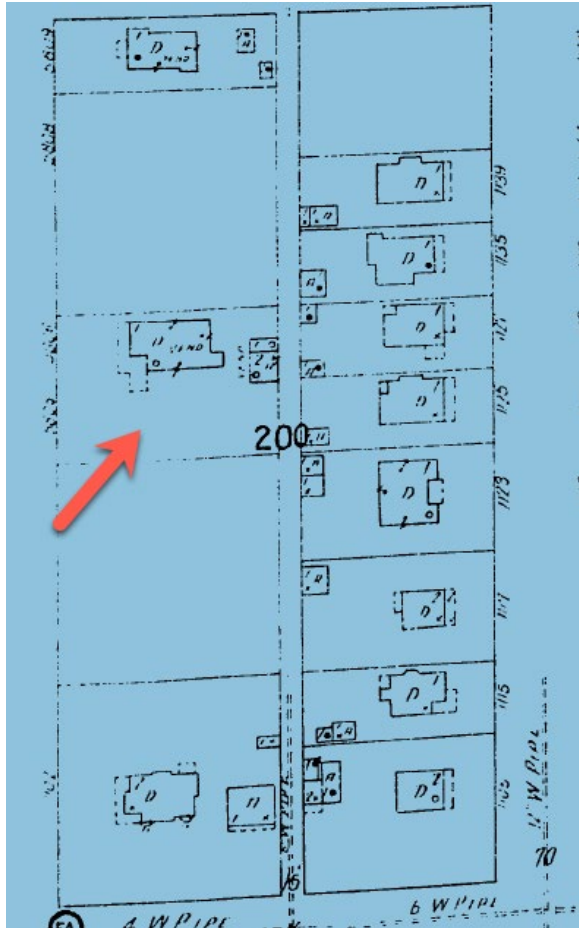
**EXHIBIT B**  
**INVENTORY OF HOUSTON HEIGHTS HISTORIC DISTRICT EAST**  
**HOUSTON, TEXAS**

PROPERTY ADDRESS		OWNER NAME	BLDG STATUS	CIRCA YR BLT	STYLE	BLK	LOT/TRACT*
313	E 15th St	David H Vandiver	PC	1905	Modified L-Plan Queen Anne	138	Trs 11A & 12A
323	E 15th St	Ron and Linda Siemers	C	1920	Bungalow Craftsman	138	Trs 11 & 12
411	E 15th St	Olivia and Fred Braastad	PC	1919	Bungalow Craftsman	137	Trs 10A, 11A & 12A
414	E 15th St	Gloria G Prince	PC	1930	Bungalow Craftsman	160	Trs 1A & 2B
423	E 15th St	Sandra Acosta	PC	1915	Bungalow Craftsman	137	Trs 11 & 12
426	E 15th St	See 1445 Columbia					
503	E 15th St	See 1504 Columbia					
505	E 15th St	Michael D Ruland	NC	1915	Cottage	136	Tr 13A & 14A
514	E 15th St	Andrew J and Sabrina Murphy	C	1920	Garage Apartment	161	See 1448 Columbia
117	E 16th St	Charles and Laura Thorpe	PC	1910	Garage Apartment	117	Lts 12 & 13
121	E 16th St	Charles and Laura Thorpe	C	1910	Foursquare Colonial Revival	117	Lts 12 & 13
206	E 16th St	Geneva Hughes	PC	1925	Bungalow Craftsman	139	Trs 23B & 24A
207	E 16th St	Donald L and Sarah Hunt	NC		Garage Apartment	116	See 1602 Harvard
210	E 16th St	Kevin W and Jody B Garey	PC	1915	Folk Victorian	138	Trs 1A & 2A
301	E 16th St	Eulalia Foreman	PC	1924	Modified L-Plan Queen Anne	115	Lt 14 & Tr 15A
304	E 16th St	Darrell L Miller	PC	1940	Cottage	138	Tr 24B
309	E 16th St	Leslie John Lohmann	PC	1920	Bungalow Craftsman	115	Trs 12 & 13
415	E 16th St	Daniel Impastato and Trust	C	1940	English Cottage	114	Tr 14A
424	E 16th St	Roseltha Cary Martinez	PC	1940	Cottage	137	Lt 1
501	E 16th St	Robert E Davis and Janice M Davis	PC	1919	Bungalow Craftsman	113	Trs 14A & 15A
502	E 16th St	Remmert Automotive Service	NC	1970	Metal warehouse	136	Tr 23
502	E 16th St	Remmert Automotive Service	NC	1970	Metal warehouse	136	Lt 24
503	E 16th St	Josie Cobb	C	1920	Bungalow Craftsman	113	Trs 14 & 15
509	E 16th St	Forrest G and Bronwen Spindle	PC	1940	Apartments	113	Tr 13
514	E 16th St	Juliet H Hicks and Michael R McFarland Jr.	PC	1940	Garage Apartment	136	See 1545 Oxford
521	E 16th St	Interiors + Office	PC	1930	Commercial Brick 1-story	113	Tr 13A
116	E 18th St	Guss D Opperman and Charles Wheat	NC	2000	Garage Apartment	117	See 1722 Heights Blvd
121	E 18th St	Richard C Hill	PC	1915	Modified L-Plan Queen Anne	104	Lts 12 & 13
316	E 18th St	Pedro M and Carol J Turpeau	PC	1937	Garage Apartment	115	See 1650 Cortlandt
317	E 18th St	Edward and Susan Davis	PC	1920	Garage Apartment	106	Trs 14A, 15A
318	E 18th St	Katherine Healey	NC	1997	New Single Family	115	Trs 1 and 2
319	E 18th St	Barbara D Prouty	NC	1960	Single Family	106	Trs 12 A and 13 A
320	E 18th St	Horace E Kelley Jr and Tr Etal	NC	1970	Duplex	115	Trs 1 A and 2 A
401	E 18th St	Christopher Hunniford and Lindsay Sivard	PC	1920	Bungalow Craftsman	107	Lt 14
402	E 18th St	Neda Ghedami	C	1920	Bungalow Craftsman	114	Tr 26A

**EXHIBIT B**  
**INVENTORY OF HOUSTON HEIGHTS HISTORIC DISTRICT EAST**  
**HOUSTON, TEXAS**

PROPERTY ADDRESS		OWNER NAME	BLDG STATUS	CIRCA YR BLT	STYLE	BLK	LOT/TRACT*
409	E 18th St	Horace E Kelley Jr and Tr Etal	PC	1920	Bungalow Craftsman	107	Tr 14A
412	E 18th St	Janet Erwin	PC	1900	Gable-front Cottage	114	Tr 26B
414	E 18th St	Karen Wylie	PC	1900	Gable-front Cottage	114	Trs 25 and 26
501	E 18th St	David Orval Parker	NC	1998	Funeral home	108	14, 15 and 16
510	E 18th St	Robert A Buzzanco	PC	1900	L-Plan Cottage	113	Tr 26
521	E 18th St	Edwin H Chovanec	NC	1960	Single Family	108	Tr 13A
208	E 20th St	Fidel Balderas	PC	1945	1-story Commercial Brick	105	Lt 26
214	E 20th St	Fidel Balderas	NC	1960	Wood Bldg	105	Lt 26
314	E 20th St	J A Palavan FAM Ltd Prtshp	NC	1960	Commercial	106	See 1850 Cortlandt
320	E 20th St	Kelly E Horace III	PC	1930	Commercial	106	Lts 1, 2 & 3
402	E 20th St	Carmen Martinez	NC	1950	Commercial	107	Lt 26 & Tr 25
420	E 20th St	Nguyen Phuong Manh B and A Venture Holding Inc.	NC	1955	Commercial	107	Lts 1, 2 & Tr 3A
502	E 20th St		NC	1940	Commercial	108	Lt 26
520	E 20th St	Far Rockaway Properties	NC	2003	Commercial	108	Lts 1 & 2
104	W 12th St	Strauss Richard M	PC	1900	2-story Commercial Wood	201	Lt 24
110	W 12th St	Strauss Richard M	PC	1916	2-story Commercial Brick	201	Lt 24
112	W 12th St	Strauss Richard M	PC	1922	2-story Commercial Brick	201	Lt 24
107	W 12th St	City of Houston, Fire Department	PC	1914	Jacobean	186	Lts 13, 14 15 & Tr 36
none yet	W 13th St	Heights Reserve Inc.	V	Lot	Lot	171	1 Alamo Row East
none yet	W 13th St	Heights Reserve Inc.	V	Lot	Lot	171	2 Alamo Row East
none yet	W 13th St	Heights Reserve Inc.	V	Lot	Lot	171	3 Alamo Row East
none yet	W 13th St	Heights Reserve Inc.	V	Lot	Lot	171	4 Alamo Row East
116	W 13th St	Grace United Methodist Church	C	1912	Horse Hitching Rings (curb)	186	Lt 24
109	W 15th St	Swilley Hudson Assoc. Inc.	NC	1970		141	See 1505 Heights
128	W 17th St	Craig Davidson	V	Lot	Lot	133	Trs 13 & 14
124	W 17th St	Laura and John Virgadamo	C	1909	2-story Queen Anne	133	Trs 13A & 14A

**ATTACHMENT B**  
1132 Heights Blvd.



1856

# RANKIN AUDIT COMPANY

## Auditors and Income Tax Specialists

### UNION NATIONAL BANK BUILDING HOUSTON, TEXAS

W. R. RANKIN, C. P. A.

V. G. GILLINGHAM, C. P. A.

PHONE PRESTON 5449

Between Its Blvd

STREET AND AVENUE GUIDE (1935)

Howard

Gooley C E  
15th av intersects  
Overhillier H O  
Boyd J W  
McConnell J S  
Parks W S Dr  
Heller Roy  
Lubbock W R  
McNair W R  
Gartner F W  
Vasant  
Jones F A C  
Lockie W R  
Camp J D  
Jones S B  
Brown C J  
Grosheheim Maurice  
Lover J B  
Richmond D B  
Wardell Ethel (c)  
Yahi A R  
Gulf Ref Co fill sta  
14th av intersects  
Hansen W P  
Ames R C  
Richter O A  
Culver Claude  
Spruce W T  
Schwarz L T Mrs  
Bawell S L  
Kilgusworth L E  
Paul Roy  
Stinner J H  
Coley W H  
Mills J C  
McAllister E S  
Kerr J E Dr  
Patterson E E  
13th av intersects  
Bosteler Hans drugs  
Wimbler Bros grocs  
Wimbler Bros fill sta  
Vasant  
Thomas T E  
Vasant  
Coley J J  
Pucha H R  
Bauch A C contr  
Spaw C U  
Haby A T  
Barnhart H E  
Hughes W S  
Gilliam N S  
12th av intersects  
Eagle Service Sta  
Smiler Conrad  
Rebecca Mary Mrs  
11th av intersects  
Hender Louise Mrs  
Eggs W R  
1218 Rumery L A Mrs  
Daves O W  
Wilkins J E  
Feyer A A  
Archer W T  
Coley H C  
Kinney W F  
Woodburn M V  
Bauk Louis  
Somerville F G  
Nance Paul  
Gooley J J  
Woodbury O P  
McTigue John  
10th av intersects  
Snow S P  
Hall J R  
Crahan C H  
Grafton J T  
Rees H E  
Deutsch F H  
Lakemacher Henrietta Mrs  
Bostan L F

Drab Daisy Mrs  
220 Ross P R Mrs  
921 Allen B T  
242 Bacarrise A  
1625 Henry J L  
926 Muench Chas  
928 Clark G A  
930 Bateman H S  
932 Collier B C  
Nicks B H  
941 Ellis S D  
942 Weber Paul  
945 Pfeiffer S J  
Heights Conservatory of  
Music  
946 Vasant  
10th av intersects  
1000 Davis W B  
1003 Turley W R  
1005 Minister P C  
1007 Ellington G B  
Hooper H R  
1011 Webber S H  
10th av begins  
1015 Hawkins G W  
Noonan G C  
1017 Munch P  
1018 APARTMENTS  
1 Marmion C B  
2 Elrod H W  
3 O'Connor J R  
4 Dewey P C  
1030 Moore S L  
1037 1/2 Ritchie Lanier  
1045 Renn W A  
11th av intersects  
1101 Wiley S W  
1102 Milroy N H Mrs  
1110 Vasant  
1111 Clements A R  
1115 Hardt H F  
Sirel Herman  
1117 Lager A L  
1132 Rappe C W & Son contrs  
1135 Rappe C W  
1136 Clark D  
1140 Vasant  
1148 Nairn P A  
1149 Hamblen M A Mrs  
12th av intersects  
1202 Sloop H C chiropractor  
1203 Latchford Ella Mrs  
rear Paul Thos (c)  
1240 McMillan A V Mrs  
Walker L R  
1210 Hovey C W  
1211 Connolly W E  
1214 Pilot Christopher  
1218 Rumery L A Mrs  
1222 Jones O W  
1225 Donovan J G  
1227 Beasley R J Mrs  
1229 Brown J H  
1230 Ray J W  
1235 Petteway E C  
Keller M W  
1239 Heights Motor Co  
1240 Bybee Chas  
1242 Nixon J D  
1244 Hoyt Violet Mrs  
1245 Kelly M W  
12th av intersects  
1311 Johnson N M Mrs  
1317 Wilson Earl  
1319 Thompson F A  
1320 Carter O M  
rear Donahue Ella (c)  
1321 Weatherford J E  
rear Robinson Al (c)  
1325 Woolery P L  
Little S J

1341 Paramount Service Station  
14th av intersects  
1401 Peacock Lottie Mrs  
rear Jackson Jos (c)  
1402 Garca Maria Mrs  
1406 Austin F R  
1407 Records R R  
Margoullis Manie Mrs  
1410 Roane Toots Mrs  
1418 Cummings O S  
1421 Ellis W E  
1438 Welsh Nellie Mrs  
Deaton G N  
1437 Arnold J L  
1440 Geener W L  
1448 Keller H T Jr  
1449 Keaton W A  
15th av intersects  
1502 Bennington M Rev  
Webb R J  
Webb R R  
1505 Phelps J L Mrs  
1510 Van Etten  
1512 Sayler J B  
Funk J C  
1514 Geier W L  
1517 Oden A D  
1519 Bennett A F  
1523 Dyer J M  
1525 Feldman A A  
1529 Hills R A  
Hardman R A  
1530 McNeill W R  
rear Gaynor Isaac (c)  
1536 Cooy D D  
1546 Johnson A J  
1548 Bingle W L  
1549 Boyle T J  
Whitaker R N  
16th av intersects  
1605 Woodward E F  
1612 McGarty J  
Harris R M  
1624 Inkley W T  
1630 McKinney K A Mrs  
17th av intersects  
1739 Oliver C E  
18th av intersects  
1801 Sinclair T A  
1802 Cooley D D  
Cooley A W  
1815 Hill J H Dr  
rear Vasant  
1824 Lodge J W  
19th av begins  
1911 Howard H C  
1917 Davis C A  
1918 Sweetser T C  
1920 Royall R R  
cor Ho Hs Senior High School  
20th begins  
2002 Playgrounds The Park  
HOUSTON SAM PL - See  
Sam Houston pl  
HOWARD (4th ward)-From 1  
blk e of 9th Valentine w to  
Bail  
Valentine intersects  
1101 Vasant  
1102 Cooper Roxie (c) rms  
rear Vasant  
1103 Vasant  
1104 Moore Beaulie (c) furn rms  
1106 Smith Polly (c)  
1107 Cash Stephen (c)  
1109 Jackson Hattie (c)  
1110 Ray Geo (c)  
1110 Anderson H N (c)  
1113 Johnson Emma (c)  
1114 Williams Vicer (c)  
1118 Caithers Saml (c)  
1118 1/2 Simpson Addie (c)  
Nash intersects

**HOUSTON ICE & COLD STORAGE CO.**  
Owners and Operators of  
**MAGNOLIA PLANT**  
401 WASHINGTON AVE  
CAPACITY, 100 Tons Daily  
Preston 4128  
A. F. ENGEL, Gen. Mgr.  
Preston 6783

**KEITHLY COMPANY**  
For Store Requirements, From the Smallest Cottage to the Most Elaborate Residence,  
Hotel, Office Building or Hospital.  
**MODERN PLUMBING FIXTURES AND APPURTENANCES**  
OFFICE AND DISPLAY ROOMS:  
2205 MCKINNEY AVENUE  
Phone Preston 1824

# GREAT SOUTHERN LIFE INSURANCE CO.

HOUSTON, TEXAS

E. P. GREENWOOD, President

## ATTACHMENT A

1548 Cortlandt

1893

CAPITAL \$1,500,000.00 SURPLUS \$1,500,000.00	SOUTH TEXAS COMMERCIAL NATIONAL BANK	MEMBER FEDERAL DEPOSIT INSURANCE CORPORATION
--	--	--

**CORTLANDT—Contd.**

738 Perkins Grace Miss @  
739 Pearson Douglas R @  
740 Dunn Lillian W Mrs @  
741 Schinner Cody  
742 Thomas W H @  
743 Bennett Herbert A @  
744 Cook Victor A @  
745 Hobbs Phil B  
746 Luna John C  
747 Hamblen Henry W @  
748 Donnelly Edw H  
749 Benson Flora Mrs  
750 McVeigh Ande A Jr  
751 Smith Mary E Mrs nurse  
752 Wilkerson Jas E @  
753 Johnson John S  
754 Eliz L Miss music tchr  
755 Light Israel @  
756 Miller Cleo V  
757 Johnson Ernest E  
758 Vacant  
759 Erskine Jessie H Mrs @  
760 Middleton Wm A  
761 Clemons Fred D coml artist  
762 McFarland John W  
763 MacDonald Louis A @  
764 Wilson Chas H @  
**840 APARTMENTS**  
1 Doyle Earl W  
2 Harrington Chas B  
3 Davis Julia Mrs  
4 Vacant  
5 Doyle Wm E  
6 Shoemaker Edgar C  
7 Johnson Laura Mrs @  
8 Griffin Wm U @  
9 Spence Jack L  
10 Bullock Edson @  
**E 9th av intersects**  
901 Vacant  
902 Slavinski John P @  
903 Haines Alvin  
904 Wilcox Jos  
905 Reagan John H  
906 Carlee Bert I  
907 Hartung Geo A  
908 Matula Frank J  
909 Dornes Harry E Jr @  
910 Layton Jas M  
911 Cropper Henry E  
912 Powell Clarence C @  
913 rear Williams Clarence E  
914 Timmerman Aug H @  
915 Valliquette Grace Miss  
916 Blondeau Aug T @  
917 McMillan Jos S @  
918 Famin John T  
919 Vacant  
**941 APARTMENTS**  
1 Vacant  
2 Bright Rosa Mrs @  
3 Venable Edw  
4 rear Cabness Wayne W  
5 Garber Wesley E  
6 Hamaker Roy O  
7 Hamaker Edith Mrs furn rms  
8 Lang Chas E  
9 Muir Wm J @  
**E 10th av intersects**  
1001 Derkowski John  
1002 Peisker Fred S @  
1003 Goode Geo @ house mover  
1004 Vacant  
1005 Mahaffey Paul  
1006 Lappin Allan E  
1007 Bokenkamp Henry @  
1008 Tubbs Wilfred T  
1009 Fischer Edw J  
1010 Westfall Edw V @  
1011 Schmitt Edw J @  
1012 Backsdahl Frank M @  
1013 Campbell Emile L  
1014 Jones Rees J  
1015 Poe Chas E  
1016 Pizero Chas E  
1017 Sittler Wm E @  
1018 Weyth Ross  
**E 11th av intersects**  
1101 Van Akin Eliza Mrs  
1102 Mills Geo H @  
1103 Hamilton Leo E @  
1104 Lay Preston  
1105 Pierce Thos J  
1106 Jenkins Geo H @  
1107 Ferguson Carrie B Mrs @  
1108 Jarboe Gerard E  
1109 Ross Bridge Mrs  
1110 Waechter Fred W @  
1111 Tine Rold W @  
1112 Williams Iry E  
1113 Menefee M Burch @  
1114 Terry Frank H @  
1115 Terry Oppa L Mrs  
1116 Brown Myrtle M Mrs  
1117 Vacant  
1118 Harrison Delores A Mrs  
1119 Wilcox Homer V  
1120 Cochran Ida M Mrs @  
1121 rear Johnson Jas  
1122 Reese Wm O @  
1123 Cook Howard E  
1124 Rogers Ghent W  
**E 12th av intersects**  
1206 Chambers Fred B @ contr  
1207 Grasshoff Alvin  
1208 Oliver Judson A @  
1209 Ballard Bertha Mrs  
1210 Balshobelt W Marion @  
1211 Crowdale Wm C  
1212 Ledford Lloyd  
1213 Boyle Eva M Mrs @  
1214 Benson Archie H  
1215 Myers Fred  
1216 Myers Fred  
**APARTMENTS**  
1 Hanks Leonard S  
2 Barnes Richard  
3 Henry Curtis  
4 Henson Rex  
5 rear Ryan Fred @  
6 Watson Lee M  
7 Look Alvin C @  
8 McDonald Mary John A @  
9 Pelt Frank I  
10 Roberts Lennie E  
11 Ellis Bessie Mrs @  
12 Hock Carl J @  
13 Grubbs Nannie F Miss  
14 Morgan Robt C  
15 Bierbrauer Wm K @  
16 Kelly Eva Mrs @  
17 Preston Lindsey P Rev  
18 Wood Laura S Mrs @  
**E 13th av intersects**  
1303 Petersen Annie Mrs @  
1304 Brooks E S  
1305 Stephen Wm M  
1306 Bartlett Josephine Mrs  
1307 Webb John A  
1308 Hunt Leon V  
1309 Vance Harrison E  
1310 Turner Wm M @  
1311 Miller Emily Mrs  
1312 Eaves L A  
1313 Ball Dillius E @  
1314 Brunner Jos L @  
1315 Reed Rudolph  
1316 Farr Courtney E  
1317 Galdry Adolph J @  
1318 Burton Leonard L @  
1319 McCracken Virginia Miss @  
1320 Jones Corinne Mrs @  
1321 Harby Chas L  
1322 Cadman Reginald  
1323 Brown Claude L @  
1324 Owens Frank O  
1325 Seelies Wm H @  
1326 Roberson Robt S  
1327 Haynes Stanley R  
1328 Burin John  
1329 Lee Jennie B Mrs  
1330 Hodge Jess @  
1331 Pine Villa Apartments  
1332 Shevering Carl H  
1333 Jordan Arch L  
1334 Vacant  
1335 Schmidt Alf F  
1336 Newman Eleanor Mrs  
1337 Wittenburg Sophia Miss  
**E 14th av intersects**  
1401 Borgstrom Katie Mrs @  
1402 Borgstrom Emil K  
1403 Simpson Thos B @  
1404 Hodge Arth C  
1405 Lamb W T  
1406 Borgstrom Numa E @  
1407 Burkes H Leonard  
1408 Savage Homer T  
1409 Nelson Fred F @  
1410 Beard Wm L  
1411 Worley Wm E  
1412 Zirkel Emil F @  
1413 Moody T Rush  
1414 Mohrman Jos @  
1415 Dixon Celia M Mrs  
1416 Milby Levin G  
1417 Orlton M J  
1418 Yates Wm H @  
1419 Robinson Frank @  
1420 Isenapel Lutheran Church  
**E 15th av intersects**  
1504 Johnson Harry L @  
1505 Vescova Angulo D @  
1506 Giesecke Erna E Miss @  
1507 Craig Thos A @  
1508 Vacant  
1509 Lantz K I @  
1510 rear Gilchrist Minnie Mrs  
1511 Wallis Ernest M  
1512 Bolton Alf J @  
1513 Wilton Thos R  
1514 Smith David A @  
1515 Mock Basil F @  
1516 Riggs David R  
1517 Smith Wm N R  
1518 Fount Earl S @  
1519 Grise Annie Mrs @  
1520 Dickerson Truitt  
1521 West Harold C  
1522 Pease John E @ ice  
1523 Pease Saml E  
1524 Wilcoxson J Glenn  
1525 Hardcastle Robt D @  
1526 Williams Jos E  
**E 16th av intersects**  
1603 Forbes Benj C @  
1604 Wimberly Geo E @  
1605 Arrey Wesley L  
1606 Stewart Virchow A @  
1607 Hobbs J Marcus  
1608 Thacker Elijah O  
1609 McCrokey Kate Mrs  
1610 Fonesh Theo M @  
1611 McCready Lois Mrs @  
1612 Lamb Phillip H @  
1613 rear Vacant  
1614 Hovey C Cecil  
1615 Snell Herbert W  
1616 Sullivan Annie Mrs  
1617 Vacant  
1618 Evans Henry G  
1619 Gay Thos D  
1620 Behnken Wm F @  
1621 Geary John S @  
1622 Spiller Felix  
1623 Leach Newton C @  
1624 Swank John F @  
1625 Cook Joel W  
1626 Cooper Spawn L @  
1627 Vacant  
1628 Hovey Edw L @  
**E 17th av intersects**  
1802 Williamson John W  
1803 Niisile Chas J @  
1804 Dearing Pauline Miss  
1805 Gibson Maude Mrs @  
1806 Cummings John C  
1807 APARTMENTS  
1 Reed Malcolm V  
2 Jones Maynard  
1808 Jones J Marshall Rev @  
1809 Robt Dougan D @ plmbr  
1810 Fredericks Paris H @  
1811 Johnson Emil L  
1812 Porter H Paul @  
1813 Shadix Lacey F  
1814 Vacant  
1815 Grandoff Harry  
1816 Crain Wm H @  
1817 Johnson Ernest W @

**STAWERS**  
Complete Home Furnishers  
Interior Decorating

**Wyatt Metal  
—AND—  
Boiler Works**  
Manufacturers  
Culverts, Tanks, Boilers, Smoke Stacks, Breechings, Stills, Agitators, Condensers, Boxes, Pipe, Well Casing, Sheet Metal Products  
Washington Road & M-K-T Tracks  
PHONE  
Taylor 6145

**STANDARD PRINTING & LITHO. CO.**  
Printing—Lithographing—Stationery—Labels  
1207-11 CAPITOL AVE. Phone CAPITOL 7226

**APPLICANT'S MATERIAL**

# **RECLASSIFICATION REQUEST**

**320 E 20<sup>th</sup> Street**

**Houston Heights East Historic District**

**August 14, 2025**

# 320 E 20th Street



## 320 E 20th Street



## 320 E 20th Street



## 320 E 20th Street

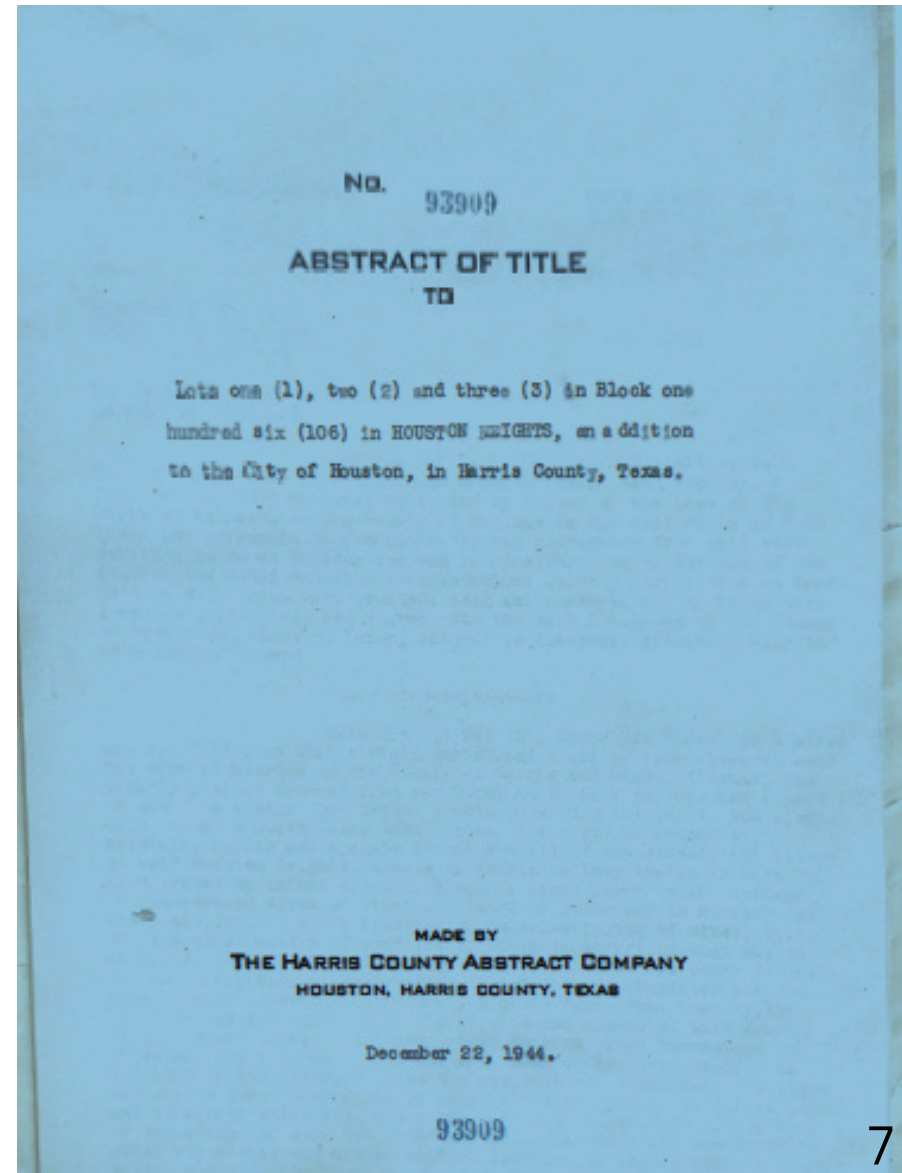
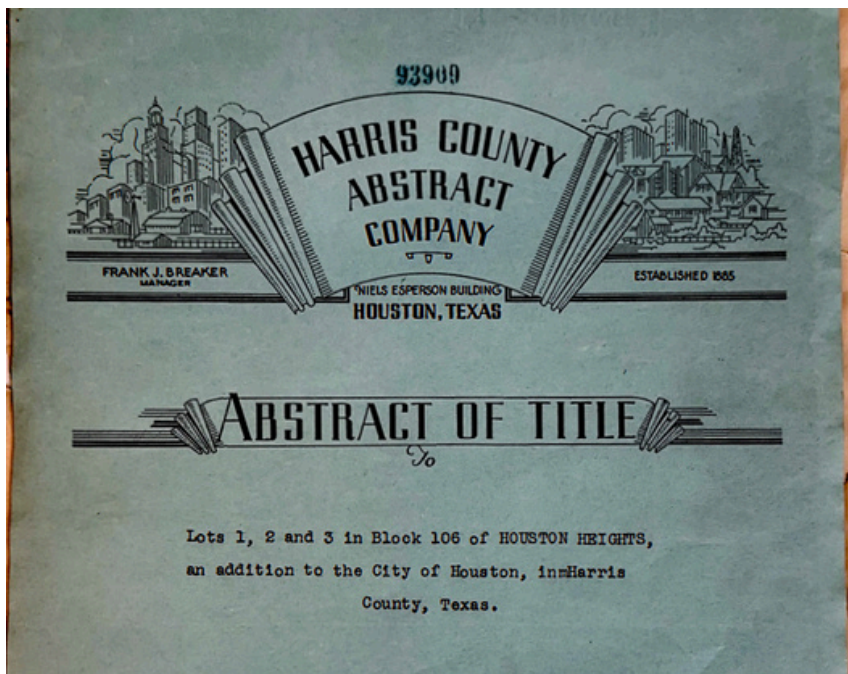


# OUR REQUEST

- Current Status: Office/Apartment & Lumber yard are classified as contributing structures in the Heights East Historic District.
- Request: Reclassify both as non-contributing
- Why?
  1. Inventory incorrectly lists 1930 as the build date
  2. Construction date outside the period of significance
  3. Buildings lack architectural alignment with the historic district
  4. Inconsistent with precedent across the Heights historic districts.
  5. The property lacks a historic streetscape and context.
  6. Physical & Functional Obsolescence

# 1. INVENTORY INCORRECTLY LISTS 1930 AS BUILD DATE

Abstract of Title Dated December 22, 1944



## 2. CONSTRUCTION DATE OUTSIDE PERIOD OF SIGNIFICANCE

- For the three Houston Heights Historic Districts, “the 1940s are generally considered the end of the period of significance” (Houston Heights Design Guidelines).
- **By 1940, the district’s “historic fabric” was essentially complete, with 96% of contributing properties already built.**
- Inventory from 1940–1949 further refines the “period of significance” to pre–World War II.
- The subject structures at 320 E 20th were built in 1945–1946.
- The inventory incorrectly lists them as built in 1930.
- Correcting the build date aligns these structures with the postwar development era.

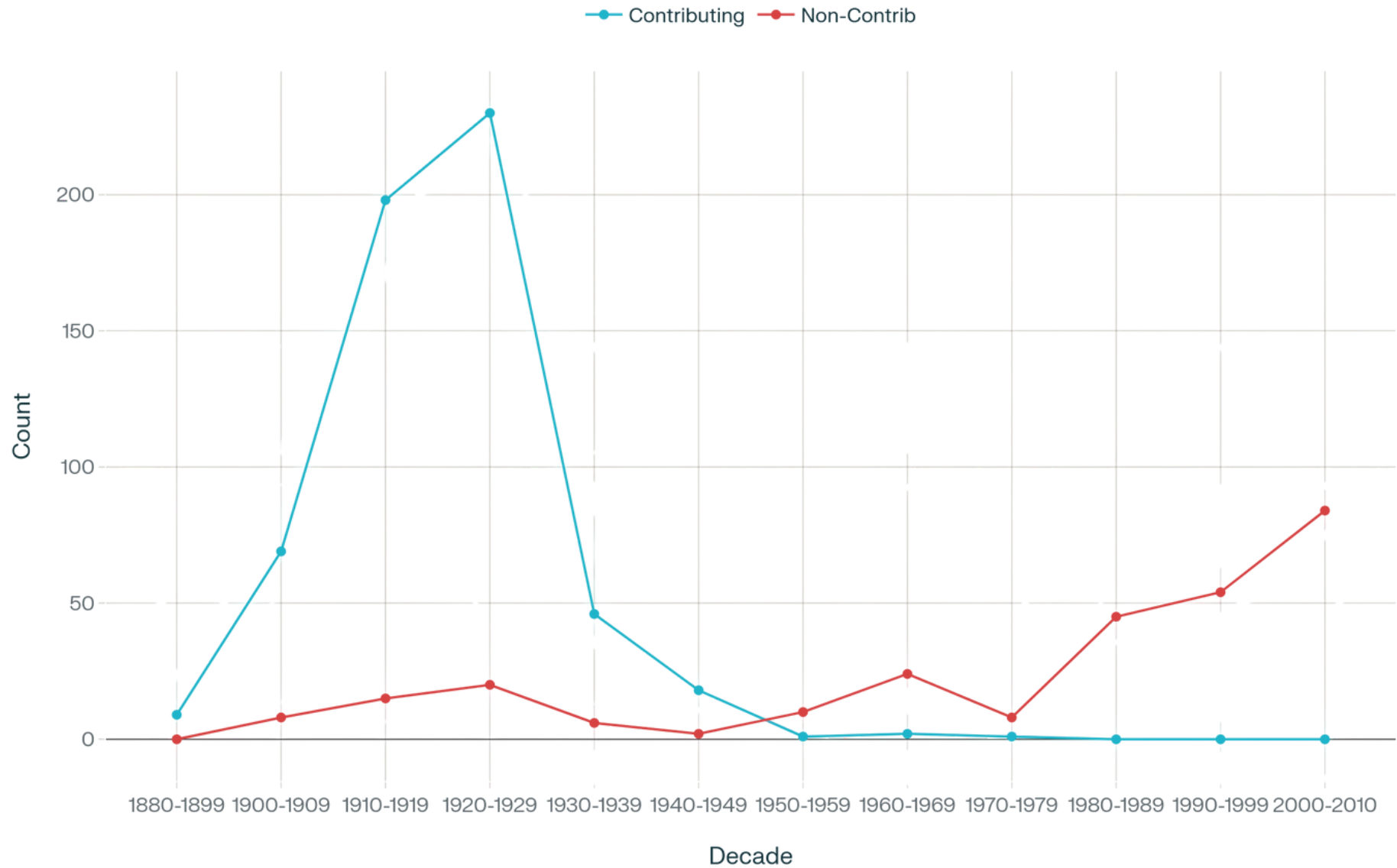
*Post-war construction = different materials, different purpose, different style.*

# HEIGHTS EAST INVENTORY

DECADE	CONTRIBUTING	NON- CONTRIBUTING	TOTAL
1880-1899	9		9
1900-1909	69	8	77
1910-1919	198	15	213
1920-1929	230	20	250
1930-1939	46	6	52
1940-1949	18	2	20
1950-1959	1	10	11
1960-1969	2	24	26
1970-1979	1	8	9
1980-1989		45	45
1990-1999		54	54
2000-2010		84	84
TOTAL	574	276	850

**NOTE: EXCLUDES PUBLIC PROPERTY AND VACANT LOTS**

## Heights East Historic District Properties by Decade



## **FACTORS LEADING TO THE END OF THE PERIOD OF SIGNIFICANCE FOR THE HEIGHTS**

- **1934: FHA was created standardizing neighborhood planning and prioritizing small-house design**
- **Early 40s: a moratorium on residential building in the United States as the country entered World War II. By 1941, domestic housing construction was dramatically curtailed, with a temporary moratorium put in place for most non-defense residential projects.**
- **Post-war GI Bill ("Servicemen's Readjustment Act of 1944"): Fueled the mid-century housing boom and reshaped communities nationwide. The focus moved away from the Heights to Garden Oaks and Timbergrove.**

## **BREAKDOWN OF HEIGHTS EAST 1940'S CONSTRUCTION**

- **20 Properties built in the 1940's - 18 designated Contributing**
- **13 out of the 18 were built prior to 1945 (all 1940-1942)**
- **Contributing properties built after 1945 are:**
  - **320 E 20<sup>th</sup> - Built 1945/1946**
  - **208 E 20<sup>th</sup> - Built after 1950 (inventory error)**
  - **Masonic Lodge**
  - **St. Andrews Church**
  - **Immanuel Lutheran Church Building**
- **Contributing properties built after 1950**
  - **Heights Church of Christ (1965)**
  - **Immanuel Lutheran Sanctuary (1961)**
  - **Grace United Methodist Church (1971)**
- **Except for 320 E 20<sup>th</sup> Street, all have a continuous connection to the Heights community life**

### **3. ARCHITECTURAL MISALIGNMENT**

#### ***Not the Heights Style***

- **The Heights Historic Districts are defined by:**
  - **Victorian and Arts & Crafts architecture**
  - **Greek Revival, Queen Anne, Craftsman, Prairie**
- **320 E 20<sup>th</sup> buildings:**
  - **Post WWII Construction**
  - **Commerical form**
  - **Moderate roof line**
  - **Narrow eaves, composite materials, no detailing**
  - **No setback**
  - **Built for utility, not residential scale or charm**

*"Built for lumber, not lemonade on the porch."*

## 4. INCONSISTENCY WITH HISTORIC PRECEDENT

- Per the guidelines, contributing commercial buildings are typically constructed of brick or masonry. There are no other examples of commercial buildings utilizing wood.
- There are 21 commercial properties listed in the Heights East Inventory
- Only 9 commercial properties are listed on the inventory as contributing; only 2 were built after 1945. The subject property and the misclassified 208 E 20<sup>th</sup>, which was built after 1950.

*This Classification Doesn't Fit The Pattern: 320 E 20<sup>th</sup> is the only post-1940 contributing property that is neither a bungalow or a community-serving building--and it has been out of operation for over 50 years.*

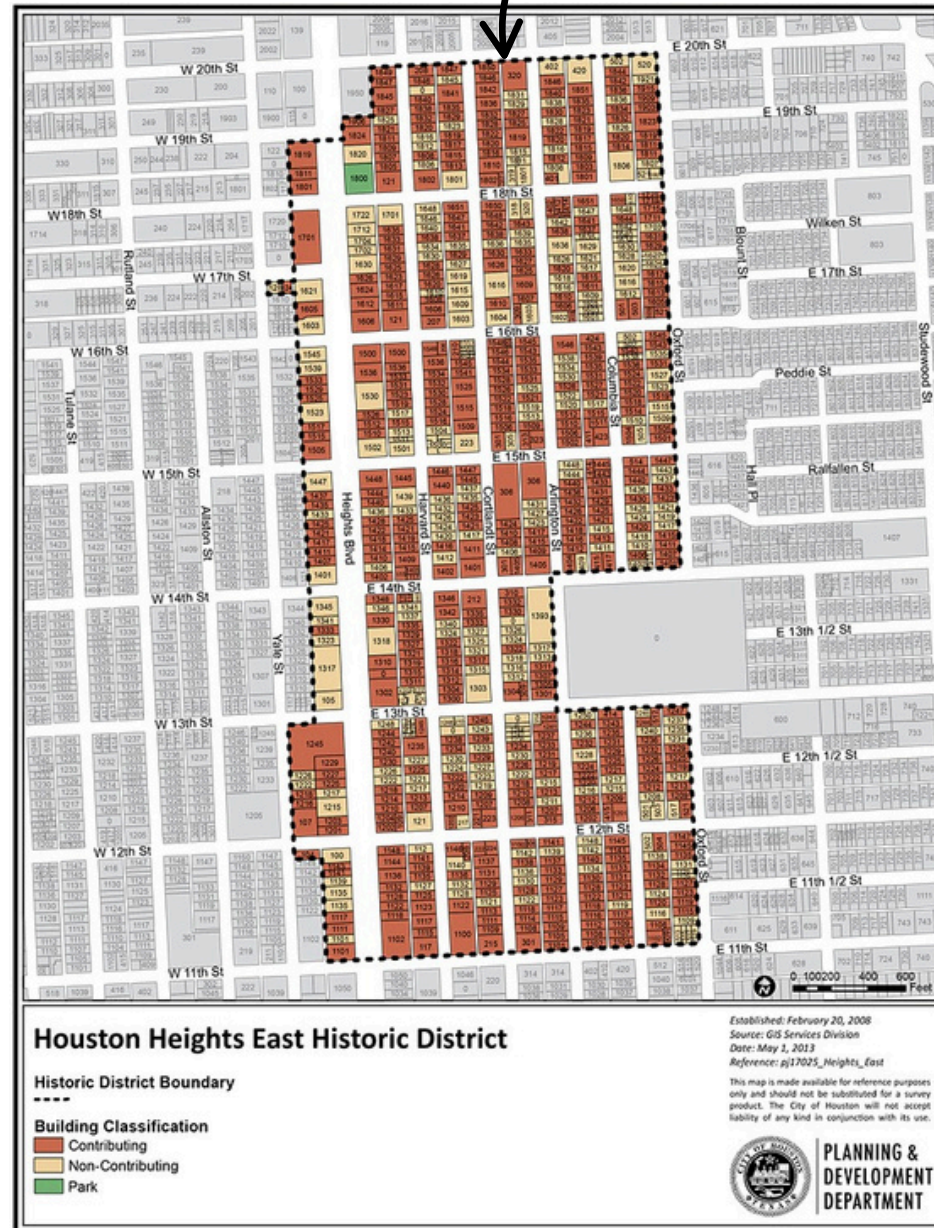
## 5. STREETSCAPE AND CONTEXT

### *Surrounding Don't Support Contribution*

- 20<sup>th</sup> Street: Mix of strip retail, commercial, townhomes, and some residential facing side streets.
- Arlington Street: Mix of residential--some contributing, some not. Subject property faces it with industrial massing.
- No cohesive historic streetscape here
- Setback, scale, and massing are inconsistent with district norms.

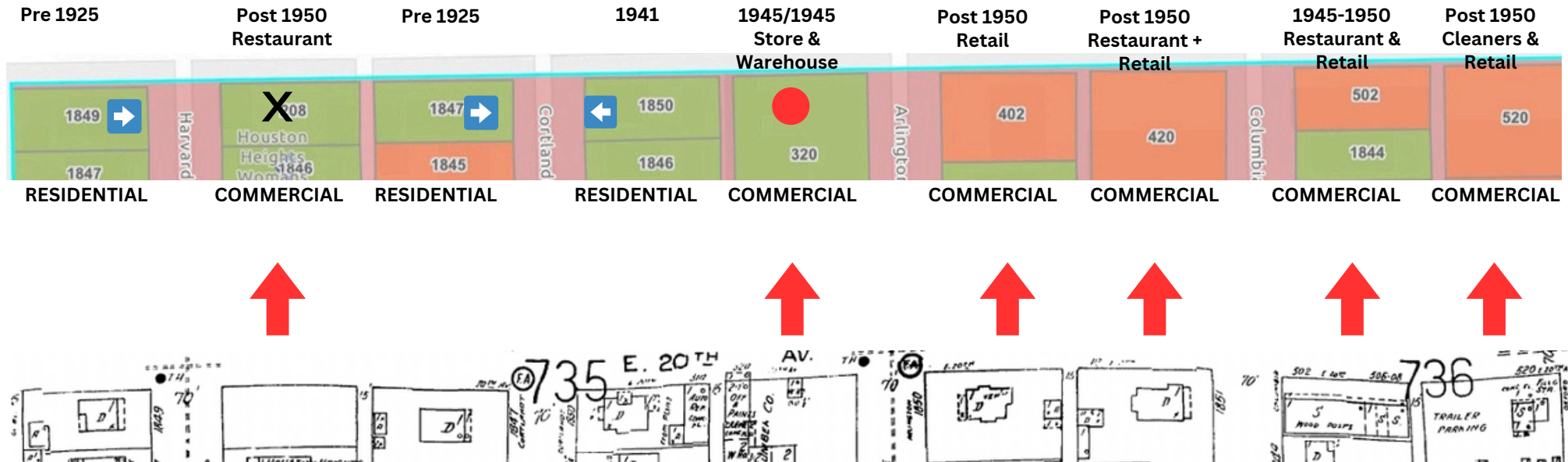
*Historic districts protect cohesive fabric. But this site sits at the edge — on a commercial corridor with no porch rhythm or tree canopy. The placement and context make it a misfit.*

# Subject Property 320 E 20<sup>th</sup> Street



# CONTEXT AREA FOR 320 E 20th STREET

## East 20th Street Commercial Corridor



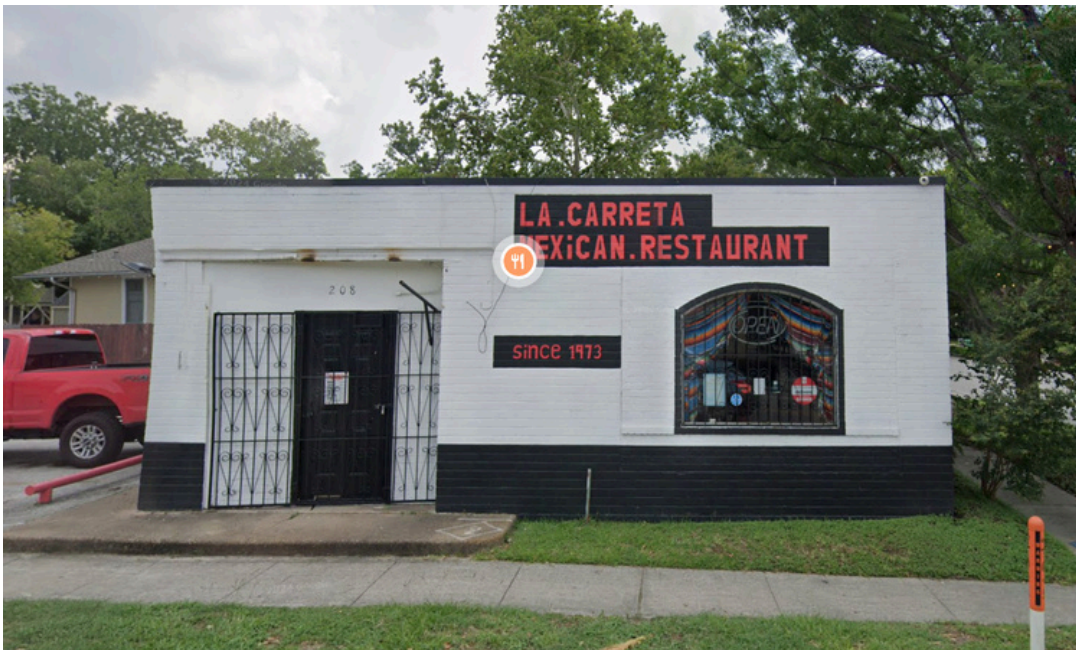
1950 SANBORN MAP

● = 320 E 20th the subject property

X = 208 E 20TH built after 1950 should not be contributing



**402 E 20<sup>th</sup> St - Post 1950 - Non-Contributing**



**208 E 20<sup>th</sup> St - Post 1950 - Contributing**



**520 E 20th -Post 1950 -Non  
Contributing**



**502 E 20th -Post 1950 -Non  
Contributing**



**420 E 20th -1945-1950 -Non  
Contributing**

**Buildings across from 320 E  
20th Street Outside the  
District**



## 6. PHYSICAL & FUNCTIONAL OBSOLESCENCE

### *Condition Reinforces Incompatibility*

- Roof failure on both buildings
- Office/apartment: No HVAC, visible deterioration
- Zero front setback vs typical porch
- No architectural features to be preserved or restored
- Not insurable
- What we see is not misuse but decades of underuse

*What exists today is not a preserved historic asset, but an aging structure built for a specific commercial use that no longer exists.*

# WHY RECLASSIFICATION MATTERS

- Upholds the integrity of the district: Preserving what isn't historic dilutes the value of what is.
- Respects the purpose of preservation: The site lacks architectural merit and no longer reflects community use or form.
- Aligns with precedent: Commercial buildings built after 1940 are universally non-contributing across all Heights districts.
- Opens the door to compatible redevelopment: Thoughtful future use can respect the historic district's edge while serving current needs.
- Avoids symbolic preservation: Designating a warehouse as "historic" simply because it's old doesn't serve the district's goals.

*"Preservation works best when it protects the right things."*

# REQUEST SUMMARY

- The subject property meets all the criteria for reclassification:
  - The buildings at 320 E 20<sup>th</sup> are incorrectly listed as having been constructed in 1930.
  - The correct build date is 1945-1946, which is after the context period for the historic district.
  - The architectural style of the buildings is inconsistent with that of the district and is without architectural merit.
  - There is no enduring community role.
- Based on verified construction date, architectural misalignment, and context, we respectfully request:
  - Reclassification of both structures at 320 E 20<sup>th</sup> as non-contributing